

C22orf29 Polyclonal Antibody
Purified Rabbit Polyclonal Antibody (Pab)
Catalog # AP55821**Specification****C22orf29 Polyclonal Antibody - Product Information**

Application	WB, IHC-P, IHC-F, IF, ICC, E
Primary Accession	Q7L3V2
Host	Rabbit
Clonality	Polyclonal
Calculated MW	39 KDa
Physical State	Liquid
Immunogen	KLH conjugated synthetic peptide derived from human C22orf29
Epitope Specificity	21-100/364
Isotype	IgG
Purity	
affinity purified by Protein A	
Buffer	0.01M TBS (pH7.4) with 1% BSA, 0.02% Proclin300 and 50% Glycerol.
SUBCELLULAR LOCATION	Mitochondrion.
SUBUNIT	Interacts (via BH3 domain) with VDAC1. Interacts with pro-survival Bcl-2 family members, BCL2, BCL2L1 isoform Bcl-X(L), MCL1, BCL2A1 and BCL2L2. Interacts with BAX and BAK.
Important Note	This product as supplied is intended for research use only, not for use in human, therapeutic or diagnostic applications.

Background Descriptions

Chromosome 22 contains over 500 genes and about 49 million bases. Being the second smallest human chromosome, 22 contains a surprising variety of interesting genes. Phelan-McDermid syndrome, neurofibromatosis type 2 and autism are associated with chromosome 22. A schizophrenia susceptibility locus has been identified on chromosome 22 and studies show that 22q11 deletion symptoms include a high incidence of schizophrenia. Translocations between chromosomes 9 and 22 may lead to the formation of the Philadelphia chromosome and the subsequent production of the novel fusion protein, Bcr-Abl, a potent cell proliferation activator found in several types of leukemia. The C22orf29 gene product has been provisionally designated C22orf29 pending further characterization

C22orf29 Polyclonal Antibody - Additional Information**Gene ID** 79680**Other Names**

Protein Bop, BH3-only protein, Retrotransposon Gag-like protein 10
{ECO:0000312|HGNC:HGNC:26112}, RTL10 (http://www.genenames.org/cgi-bin/gene_symbol_report?hgnc_id=26112)

target="_blank">HGNC:26112), BOP, C22orf29

Target/Specificity

Ubiquitously expressed.

Dilution

WB~~1:1000<br \>IHC-P~~N/A<br \>IHC-F~~N/A<br \>IF~~1:50~200<br \>ICC~~N/A<br \>E~~N/A

Storage

Store at -20 °C for one year. Avoid repeated freeze/thaw cycles. When reconstituted in sterile pH 7.4 0.01M PBS or diluent of antibody the antibody is stable for at least two weeks at 2-4 °C.

C22orf29 Polyclonal Antibody - Protein Information

Name RTL10 ([HGNC:26112](#))

Synonyms BOP, C22orf29

Function

Could induce apoptosis in a BH3 domain-dependent manner. The direct interaction network of Bcl-2 family members may play a key role in modulation RTL10/BOP intrinsic apoptotic signaling activity.

Cellular Location

Mitochondrion.

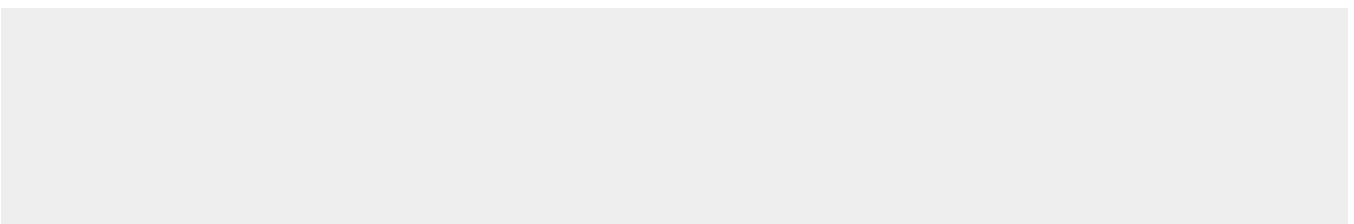
Tissue Location

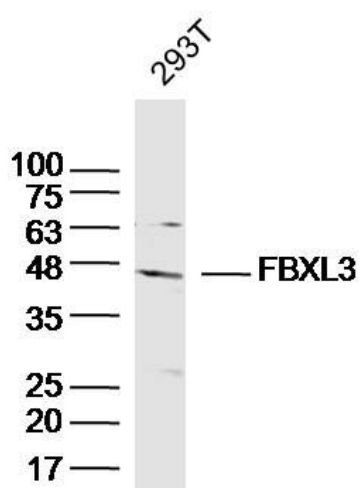
Ubiquitously expressed.

C22orf29 Polyclonal Antibody - Protocols

Provided below are standard protocols that you may find useful for product applications.

- [Western Blot](#)
- [Blocking Peptides](#)
- [Dot Blot](#)
- [Immunohistochemistry](#)
- [Immunofluorescence](#)
- [Immunoprecipitation](#)
- [Flow Cytometry](#)
- [Cell Culture](#)

C22orf29 Polyclonal Antibody - Images



Sample: 293T Cell (Human) Lysate at 40 ug
Primary: Anti-FBXL3(bs-15135R) at 1/300 dilution
Secondary: IRDye800CW Goat Anti-Rabbit IgG at 1/20000 dilution
Predicted band size: 39kD
Observed band size: 45kD