

**C3orf38 Polyclonal Antibody**  
**Purified Rabbit Polyclonal Antibody (Pab)**  
**Catalog # AP55852****Specification****C3orf38 Polyclonal Antibody - Product Information**

Application	WB, IHC-P, IHC-F, IF, ICC
Primary Accession	<a href="#">Q5JPI3</a>
Reactivity	Rat, Dog
Host	Rabbit
Clonality	Polyclonal
Calculated MW	38 KDa
Physical State	Liquid
Immunogen	KLH conjugated synthetic peptide derived from human C3orf38
Epitope Specificity	21-120/329
Isotype	IgG
<b>Purity</b>	
affinity purified by Protein A	
Buffer	0.01M TBS (pH7.4) with 1% BSA, 0.02% Proclin300 and 50% Glycerol.
Important Note	This product as supplied is intended for research use only, not for use in human, therapeutic or diagnostic applications.

**Background Descriptions**

Chromosome 3 is made up of about 214 million bases encoding over 1,100 genes. Notably, there is a chemokine receptor gene cluster and a variety of human cancer related loci on chromosome 3. Particular regions of the chromosome 3 short arm are deleted in many types of cancer cells. Key tumor suppressing genes on chromosome 3 encode apoptosis mediator RASSF1, cell migration regulator HYAL1 and angiogenesis suppressor SEMA3B. Marfan Syndrome, porphyria, von Hippel-Lindau syndrome, osteogenesis imperfecta and Charcot-Marie-Tooth Disease are a few of the numerous genetic diseases associated with chromosome 3. The C3orf38 gene product has been provisionally designated C3orf38 pending further characterization.

**C3orf38 Polyclonal Antibody - Additional Information****Gene ID** 285237**Other Names**

Uncharacterized protein C3orf38, C3orf38

**Dilution**

**dilution\_WB** WB~~1:1000  
**dilution\_IHC-P** IHC-P~~N/A  
**dilution\_IHC-F** IHC-F~~N/A  
**dilution\_IF** IF~~1:50~200  
**dilution\_ICC** ICC~~N/A

**Format**

0.01M TBS(pH7.4), 0.09% (W/V) sodium azide and 50% Glyce

#### Storage

Store at -20 °C for one year. Avoid repeated freeze/thaw cycles. When reconstituted in sterile pH 7.4 0.01M PBS or diluent of antibody the antibody is stable for at least two weeks at 2-4 °C.

### C3orf38 Polyclonal Antibody - Protein Information

**Name** C3orf38

#### Function

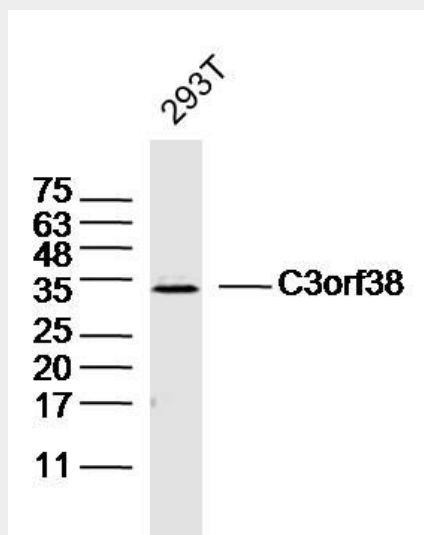
May be involved in apoptosis regulation.

### C3orf38 Polyclonal Antibody - Protocols

Provided below are standard protocols that you may find useful for product applications.

- [Western Blot](#)
- [Blocking Peptides](#)
- [Dot Blot](#)
- [Immunohistochemistry](#)
- [Immunofluorescence](#)
- [Immunoprecipitation](#)
- [Flow Cytometry](#)
- [Cell Culture](#)

### C3orf38 Polyclonal Antibody - Images



Sample: 293T(human) Cell Lysate at 40 ug  
Primary: Anti-C3orf38(bs-15177R) at 1/300 dilution  
Secondary: IRDye800CW Goat Anti-Rabbit IgG at 1/20000 dilution  
Predicted band size: 38kD  
Observed band size: 33kD