

C5orf20 Polyclonal Antibody
Purified Rabbit Polyclonal Antibody (Pab)
Catalog # AP55865**Specification**

C5orf20 Polyclonal Antibody - Product Information

Application	WB
Primary Accession	Q8TF63
Host	Rabbit
Clonality	Polyclonal
Calculated MW	26704

C5orf20 Polyclonal Antibody - Additional Information**Gene ID** 140947**Other Names**

Dendritic cell nuclear protein 1, Dendritic cell nuclear protein-1, Dendritic cell-associated nuclear protein, DCANP1 (http://www.genenames.org/cgi-bin/gene_symbol_report?hgnc_id=24459)
target="_blank">HGNC:24459)

Format

0.01M TBS(pH7.4), 0.09% (W/V) sodium azide and 50% Glyce

Storage

Store at -20 °C for one year. Avoid repeated freeze/thaw cycles. When reconstituted in sterile pH 7.4 0.01M PBS or diluent of antibody the antibody is stable for at least two weeks at 2-4 °C.

C5orf20 Polyclonal Antibody - Protein Information**Name** DCANP1 ([HGNC:24459](#))**Function**

Binds with and transactivates the corticotropin-releasing hormone (CRH) promoter.

Cellular Location

Nucleus. Cytoplasm Note=Particularly on the periphery. Colocalizes with corticotropin- releasing hormone (CRH) in parvocellular neurons in the paraventricular nucleus.

Tissue Location

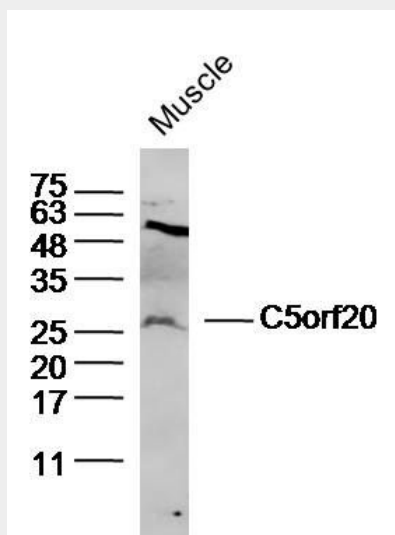
Expressed in neurons of the paraventricular nucleus, thalamus and occipital cortex and in glial cells (at protein level). Predominantly expressed in dendritic cells. Detected in brain and skeletal muscle. Highly expressed in mature dendritic cells and at a lower level in immature dendritic cells. Expressed in paraventricular nucleus, supraoptic nucleus and nucleus basalis of Meynert. Strongly expressed in paraventricular nucleus of depressed patients compared to controls. Not expressed in monocytes and B-cells

C5orf20 Polyclonal Antibody - Protocols

Provided below are standard protocols that you may find useful for product applications.

- [Western Blot](#)
- [Blocking Peptides](#)
- [Dot Blot](#)
- [Immunohistochemistry](#)
- [Immunofluorescence](#)
- [Immunoprecipitation](#)
- [Flow Cytometry](#)
- [Cell Culture](#)

C5orf20 Polyclonal Antibody - Images



Sample: Muscle (Mouse) Lysate at 40 ug
Primary: Anti-C5orf20(bs-15199R) at 1/300 dilution
Secondary: IRDye800CW Goat Anti-Rabbit IgG at 1/20000 dilution
Predicted band size: 27kD
Observed band size: 27kD