

C5orf22 Polyclonal Antibody
Purified Rabbit Polyclonal Antibody (Pab)
Catalog # AP55866

Specification

C5orf22 Polyclonal Antibody - Product Information

Application	WB, IHC-P, IHC-F, IF, ICC, E
Primary Accession	Q49AR2
Reactivity	Rat, Dog
Host	Rabbit
Clonality	Polyclonal
Calculated MW	50 KDa
Physical State	Liquid
Immunogen	KLH conjugated synthetic peptide derived from human C5orf22
Epitope Specificity	301-400/442
Isotype	IgG
Purity	
affinity purified by Protein A	
Buffer	0.01M TBS (pH7.4) with 1% BSA, 0.02% Proclin300 and 50% Glycerol.
SIMILARITY	Belongs to the UPF0489 family.
Important Note	This product as supplied is intended for research use only, not for use in human, therapeutic or diagnostic applications.

Background Descriptions

With 181 million base pairs encoding around 1,000 genes, chromosome 5 is about 6% of human genomic DNA. It is associated with Cockayne syndrome through the ERCC8 gene and familial adenomatous polyposis through the adenomatous polyposis coli (APC) tumor suppressor gene. Treacher Collins syndrome is also chromosome 5 associated and is caused by insertions or deletions within the TCOF1 gene. Deletion of the p arm of chromosome 5 leads to Cri du chat syndrome. Deletion of 5q or chromosome 5 altogether is common in therapy-related acute myelogenous leukemias and myelodysplastic syndrome. The C5orf22 gene product has been provisionally designated C5orf22 pending further characterization.

C5orf22 Polyclonal Antibody - Additional Information

Gene ID 55322

Other Names

UPF0489 protein C5orf22, C5orf22

Dilution

```
<span class = "dilution_WB">WB~~1:1000</span><br \><span class = "dilution_IHC-P">IHC-P~~N/A</span><br \><span class = "dilution_IHC-F">IHC-F~~N/A</span><br \><span class = "dilution_IF">IF~~1:50~200</span><br \><span class = "dilution_ICC">ICC~~N/A</span><br \><span class = "dilution_E">E~~N/A</span>
```

Storage

Store at -20 °C for one year. Avoid repeated freeze/thaw cycles. When reconstituted in sterile pH 7.4 0.01M PBS or diluent of antibody the antibody is stable for at least two weeks at 2-4 °C.

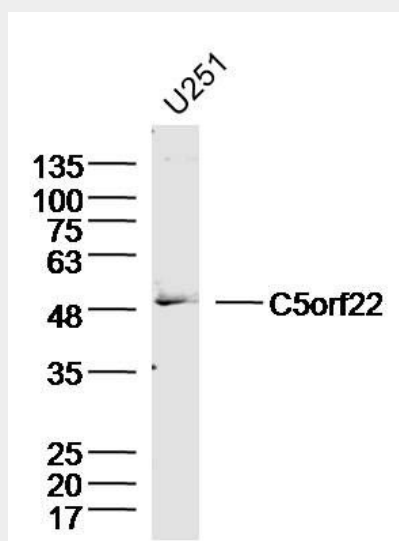
C5orf22 Polyclonal Antibody - Protein Information

Name C5orf22

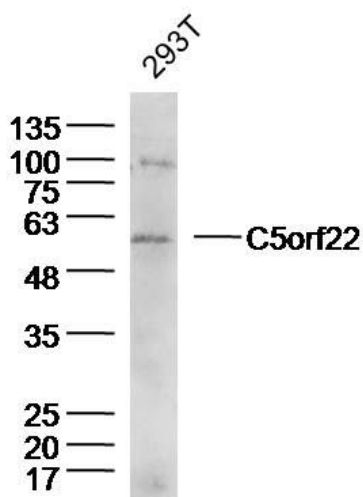
C5orf22 Polyclonal Antibody - Protocols

Provided below are standard protocols that you may find useful for product applications.

- [Western Blot](#)
- [Blocking Peptides](#)
- [Dot Blot](#)
- [Immunohistochemistry](#)
- [Immunofluorescence](#)
- [Immunoprecipitation](#)
- [Flow Cytometry](#)
- [Cell Culture](#)

C5orf22 Polyclonal Antibody - Images

Sample: U251(human) Cell Lysate at 40 ug
Primary: Anti-C5orf22(bs-15200R) at 1/300 dilution
Secondary: IRDye800CW Goat Anti-Rabbit IgG at 1/20000 dilution
Predicted band size: 50kD
Observed band size: 50kD



Sample: 293T(huamn) Cell Lysate at 40 ug
Primary: Anti-C5orf22(bs-15200R) at 1/300 dilution
Secondary: IRDye800CW Goat Anti-Rabbit IgG at 1/20000 dilution
Predicted band size: 50kD
Observed band size: 55kD