

C6orf106 Polyclonal Antibody
Purified Rabbit Polyclonal Antibody (Pab)
Catalog # AP55873**Specification**

C6orf106 Polyclonal Antibody - Product Information

Application	WB, IHC-P, IHC-F, IF, ICC, E
Primary Accession	Q9H6K1
Reactivity	Rat, Pig, Bovine
Host	Rabbit
Clonality	Polyclonal
Calculated MW	33 KDa
Physical State	Liquid
Immunogen	KLH conjugated synthetic peptide derived from human C6orf106
Epitope Specificity	1-80/298
Isotype	IgG
Purity	
affinity purified by Protein A	
Buffer	0.01M TBS (pH7.4) with 1% BSA, 0.02% Proclin300 and 50% Glycerol.
Important Note	This product as supplied is intended for research use only, not for use in human, therapeutic or diagnostic applications.

Background Descriptions

C6orf106 is a Making up nearly 6% of the human genome, chromosome 6 contains around 1,200 genes within 170 million base pairs of sequence. Deletion of a portion of the q arm of chromosome 6 is associated with early onset intestinal cancer suggesting the presence of a cancer susceptibility locus. Porphyria cutanea tarda is associated with chromosome 6 through the HFE gene which, when mutated, predisposes an individual to developing this porphyria. Notably, the PARK2 gene, which is associated with Parkinson's disease, and the genes encoding the major histocompatibility complex proteins, which are key molecular components of the immune system and determine predisposition to rheumatic diseases, are also located on chromosome 6. Stickler syndrome, 21-hydroxylase deficiency and maple syrup urine disease are also associated with genes on chromosome 6. A bipolar disorder susceptibility locus has been identified on the q arm of chromosome 6. The C6orf106 gene product has been provisionally designated C6orf106 pending further characterization.

C6orf106 Polyclonal Antibody - Additional Information**Gene ID 64771****Other Names**

Protein ILRUN, Inflammation and lipid regulator with UBA-like and NBR1-like domains protein {ECO:0000312|HGNC:HGNC:21215}, ILRUN (http://www.genenames.org/cgi-bin/gene_symbol_report?hgnc_id=21215)
HGNC:21215

Dilution

WB~~1:1000<br \>IHC-P~~N/A<br \>IHC-F~~N/A<br \>IF~~1:50~200<br \>ICC~~N/A<br \>E~~N/A

Format

0.01M TBS(pH7.4), 0.09% (W/V) sodium azide and 50% Glyce

Storage

Store at -20 °C for one year. Avoid repeated freeze/thaw cycles. When reconstituted in sterile pH 7.4 0.01M PBS or diluent of antibody the antibody is stable for at least two weeks at 2-4 °C.

C6orf106 Polyclonal Antibody - Protein Information

Name ILRUN ([HGNC:21215](#))

Function

Negative regulator of innate antiviral response. Blocks IRF3- dependent cytokine production such as IFNA, IFNB and TNF (PubMed:29802199). Interacts with IRF3 and inhibits IRF3 recruitment to type I IFN promoter sequences while also reducing nuclear levels of the coactivators EP300 and CREBBP (PubMed:29802199).

Cellular Location

Cytoplasm. Nucleus

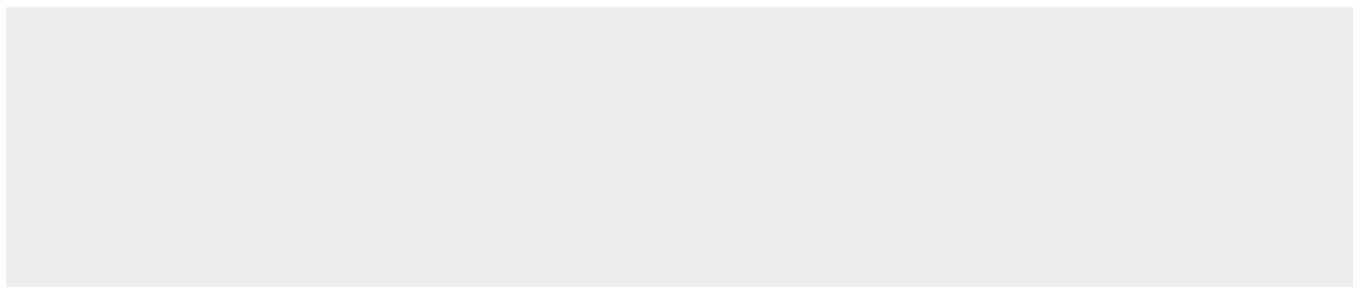
Tissue Location

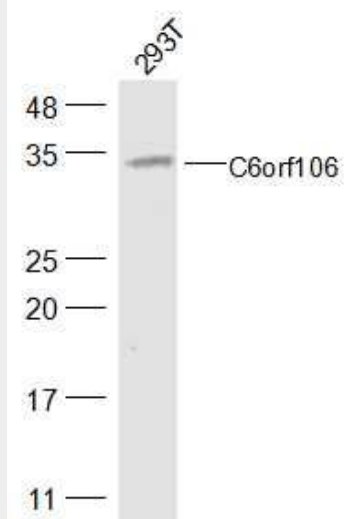
Expressed in lung (at protein level).

C6orf106 Polyclonal Antibody - Protocols

Provided below are standard protocols that you may find useful for product applications.

- [Western Blot](#)
- [Blocking Peptides](#)
- [Dot Blot](#)
- [Immunohistochemistry](#)
- [Immunofluorescence](#)
- [Immunoprecipitation](#)
- [Flow Cytometry](#)
- [Cell Culture](#)

C6orf106 Polyclonal Antibody - Images



Sample:

293T(Human) Cell Lysate at 40 ug

Primary: Anti-C6orf106 (bs-15213R) at 1/300 dilution

Secondary: IRDye800CW Goat Anti-Rabbit IgG at 1/20000 dilution

Predicted band size: 33 kD

Observed band size: 33 kD