

C6orf115 Polyclonal Antibody
Purified Rabbit Polyclonal Antibody (Pab)
Catalog # AP55874**Specification**

C6orf115 Polyclonal Antibody - Product Information

Application	FC
Primary Accession	O9P1F3
Reactivity	Rat, Pig, Dog, Bovine
Host	Rabbit
Clonality	Polyclonal
Calculated MW	9056

C6orf115 Polyclonal Antibody - Additional Information**Gene ID** 58527**Other Names**

Costars family protein ABRACL, ABRA C-terminal-like protein, ABRACL, C6orf115

Format

0.01M TBS(pH7.4), 0.09% (W/V) sodium azide and 50% Glyce

Storage

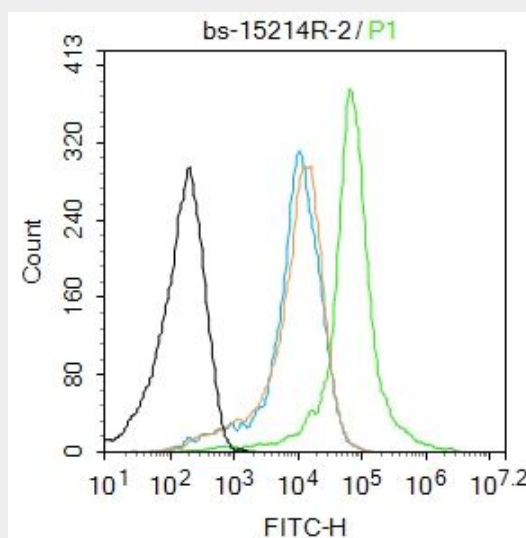
Store at -20 °C for one year. Avoid repeated freeze/thaw cycles. When reconstituted in sterile pH 7.4 0.01M PBS or diluent of antibody the antibody is stable for at least two weeks at 2-4 °C.

C6orf115 Polyclonal Antibody - Protein Information**Name** ABRACL**Synonyms** C6orf115**C6orf115 Polyclonal Antibody - Protocols**

Provided below are standard protocols that you may find useful for product applications.

- [Western Blot](#)
- [Blocking Peptides](#)
- [Dot Blot](#)
- [Immunohistochemistry](#)
- [Immunofluorescence](#)
- [Immunoprecipitation](#)
- [Flow Cytometry](#)
- [Cell Culture](#)

C6orf115 Polyclonal Antibody - Images



Blank control: Mouse spleen.

Primary Antibody (green line): Rabbit Anti-C6orf115 antibody (bs-15214R)

Dilution: 2 µg /10⁶ cells;

Isotype Control Antibody (orange line): Rabbit IgG .

Secondary Antibody : Goat anti-rabbit IgG-AF488

Dilution: 1 µg /test.

Protocol

The cells were fixed with 70% ethanol (10min at room temperature) and then were incubated in 5%BSA to block non-specific protein-protein interactions for 30 min at room temperature .Cells stained with Primary Antibody for 30 min at room temperature. The secondary antibody used for 40 min at room temperature. Acquisition of 20,000 events was performed.