

CC106 Antibody (Center)
Affinity Purified Rabbit Polyclonal Antibody (Pab)
Catalog # AP5589c**Specification**

CC106 Antibody (Center) - Product Information

Application	FC, IHC-P, WB,E
Primary Accession	O9BWC9
Other Accession	O1LZ89 , NP_037433.2
Reactivity	Human, Mouse
Predicted	Bovine
Host	Rabbit
Clonality	Polyclonal
Isotype	Rabbit IgG
Calculated MW	32032
Antigen Region	151-180

CC106 Antibody (Center) - Additional Information**Gene ID** 29903**Other Names**

Coiled-coil domain-containing protein 106, CCDC106

Target/Specificity

This CC106 antibody is generated from rabbits immunized with a KLH conjugated synthetic peptide between 151-180 amino acids from the Central region of human CC106.

Dilution

FC~~1:10~50

IHC-P~~1:50~100

WB~~1:1000

E~~Use at an assay dependent concentration.

Format

Purified polyclonal antibody supplied in PBS with 0.09% (W/V) sodium azide. This antibody is purified through a protein A column, followed by peptide affinity purification.

Storage

Maintain refrigerated at 2-8°C for up to 2 weeks. For long term storage store at -20°C in small aliquots to prevent freeze-thaw cycles.

Precautions

CC106 Antibody (Center) is for research use only and not for use in diagnostic or therapeutic procedures.

CC106 Antibody (Center) - Protein Information

Name CCDC106

Function Promotes the degradation of p53/TP53 protein and inhibits its transactivity.

Cellular Location

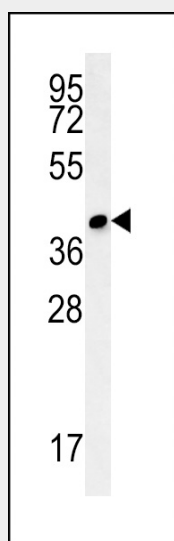
Nucleus. Note=Colocalizes with p53/TP53

CC106 Antibody (Center) - Protocols

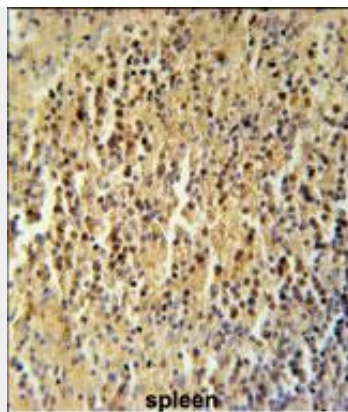
Provided below are standard protocols that you may find useful for product applications.

- [Western Blot](#)
- [Blocking Peptides](#)
- [Dot Blot](#)
- [Immunohistochemistry](#)
- [Immunofluorescence](#)
- [Immunoprecipitation](#)
- [Flow Cytometry](#)
- [Cell Culture](#)

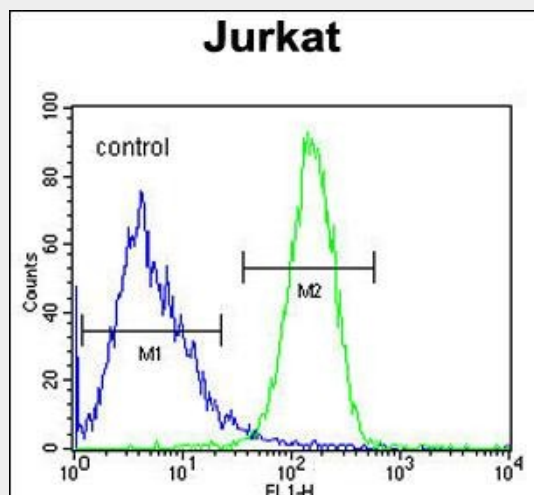
CC106 Antibody (Center) - Images



CC106 Antibody (Center) (Cat. #AP5589c) western blot analysis in mouse cerebellum tissue lysates (15ug/lane). This demonstrates the CC106 antibody detected CC106 protein (arrow).



CC106 Antibody (Center) (Cat. #AP5589c) immunohistochemistry analysis in formalin fixed and paraffin embedded human spleen tissue followed by peroxidase conjugation of the secondary antibody and DAB staining. This data demonstrates the use of the CC106 Antibody (Center) for immunohistochemistry. Clinical relevance has not been evaluated.



CC106 Antibody (Center) (Cat. #AP5589c) flow cytometric analysis of Jurkat cells (right histogram) compared to a negative control cell (left histogram). FITC-conjugated goat-anti-rabbit secondary antibodies were used for the analysis.

CC106 Antibody (Center) - References

Zhou, J., et al. FEBS Lett. 584(6):1085-1090(2010)
Cheng, J., et al. Science 308(5725):1149-1154(2005)