

C9orf96 Polyclonal Antibody
Purified Rabbit Polyclonal Antibody (Pab)
Catalog # AP55961**Specification**

C9orf96 Polyclonal Antibody - Product Information

| | |
|--------------------------------|---|
| Application | IHC-P, IHC-F, IF, ICC, E |
| Primary Accession | Q8NE28 |
| Host | Rabbit |
| Clonality | Polyclonal |
| Calculated MW | 76 KDa |
| Physical State | Liquid |
| Immunogen | KLH conjugated synthetic peptide derived from human C9orf96 |
| Epitope Specificity | 101-200/680 |
| Isotype | IgG |
| Purity | |
| affinity purified by Protein A | |
| Buffer | 0.01M TBS (pH7.4) with 1% BSA, 0.02% Proclin300 and 50% Glycerol. |
| SIMILARITY | Belongs to the protein kinase superfamily. Ser/Thr protein kinase family. STKL subfamily. Contains 1 protein kinase domain. |
| Important Note | This product as supplied is intended for research use only, not for use in human, therapeutic or diagnostic applications. |

Background Descriptions

C9orf96, also known as Protein kinase-like protein SgK071, is a 680 amino acid protein that belongs to the Ser/Thr protein kinase family of the protein kinase superfamily. There are three isoforms of C9orf96 that are produced as a result of alternative splicing events. The gene encoding C9orf96 maps to human chromosome 9, which consists of about 145 million bases and 4% of the human genome and encodes nearly 900 genes. Considered to play a role in gender determination, deletion of the distal portion of 9p can lead to development of male to female sex reversal, the phenotype of a female with a male X,Y genotype. Hereditary hemorrhagic telangiectasia, which is characterized by harmful vascular defects, is associated with the chromosome 9 gene encoding endoglin protein, ENG. Familial dysautonomia is also associated with chromosome 9 though through the gene IKBKAP. Notably, chromosome 9 encompasses the largest interferon family gene cluster. Chromosome 9 is partnered with chromosome 22 in the translocation leading to the aberrant production of BCR-ABL fusion protein often found in leukemias.

C9orf96 Polyclonal Antibody - Additional Information**Gene ID** 169436**Other Names**

Serine/threonine kinase-like domain-containing protein STKLD1, Serine/threonine kinase-like domain-containing protein 1, Sugen kinase 071, STKLD1, C9orf96, SGK071

Dilution

IHC-P ~ ~ N/A
IHC-F ~ ~ N/A
IF ~ ~ 1:50 ~ 200
ICC ~ ~ N/A
E ~ ~ N/A

Format

0.01M TBS(pH7.4), 0.09% (W/V) sodium azide and 50% Glyce

Storage

Store at -20 °C for one year. Avoid repeated freeze/thaw cycles. When reconstituted in sterile pH 7.4 0.01M PBS or diluent of antibody the antibody is stable for at least two weeks at 2-4 °C.

C9orf96 Polyclonal Antibody - Protein Information

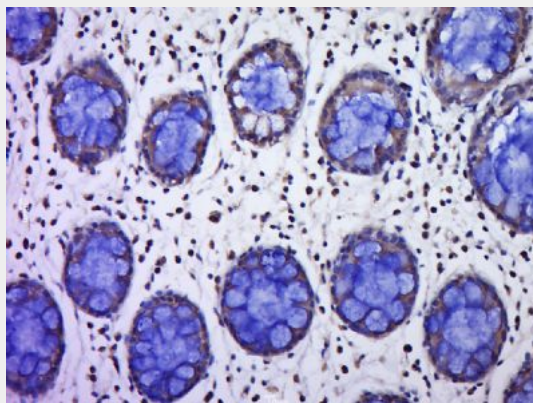
Name STKLD1

Synonyms C9orf96, SGK071

C9orf96 Polyclonal Antibody - Protocols

Provided below are standard protocols that you may find useful for product applications.

- [Western Blot](#)
- [Blocking Peptides](#)
- [Dot Blot](#)
- [Immunohistochemistry](#)
- [Immunofluorescence](#)
- [Immunoprecipitation](#)
- [Flow Cytometry](#)
- [Cell Culture](#)

C9orf96 Polyclonal Antibody - Images

Paraformaldehyde-fixed, paraffin embedded (Human colon cancer); Antigen retrieval by boiling in sodium citrate buffer (pH6.0) for 15min; Block endogenous peroxidase by 3% hydrogen peroxide for 20 minutes; Blocking buffer (normal goat serum) at 37°C for 30min; Antibody incubation with (Chromosome 9 open reading frame 96; C9orf96) Polyclonal Antibody, Unconjugated (bs-15350R) at 1:400 overnight at 4°C, followed by a conjugated secondary (sp-0023) for 20 minutes and DAB

staining.