

TAF1D Antibody (N-term)
Affinity Purified Rabbit Polyclonal Antibody (Pab)
Catalog # AP5597a

Specification

TAF1D Antibody (N-term) - Product Information

Application	WB, IHC-P, FC,E
Primary Accession	O9H5J8
Other Accession	NP_077021.1
Reactivity	Human, Mouse
Host	Rabbit
Clonality	Polyclonal
Isotype	Rabbit IgG
Calculated MW	32058
Antigen Region	62-90

TAF1D Antibody (N-term) - Additional Information

Gene ID 79101

Other Names

TATA box-binding protein-associated factor RNA polymerase I subunit D, RNA polymerase I-specific TBP-associated factor 41 kDa, TAFI41, TATA box-binding protein-associated factor 1D, TBP-associated factor 1D, Transcription initiation factor SL1/TIF-IB subunit D, TAF1D, JOSD3

Target/Specificity

This TAF1D antibody is generated from rabbits immunized with a KLH conjugated synthetic peptide between 62-90 amino acids from the N-terminal region of human TAF1D.

Dilution

WB~~1:1000
IHC-P~~1:50~100
FC~~1:10~50

Format

Purified polyclonal antibody supplied in PBS with 0.09% (W/V) sodium azide. This antibody is purified through a protein A column, followed by peptide affinity purification.

Storage

Maintain refrigerated at 2-8°C for up to 2 weeks. For long term storage store at -20°C in small aliquots to prevent freeze-thaw cycles.

Precautions

TAF1D Antibody (N-term) is for research use only and not for use in diagnostic or therapeutic procedures.

TAF1D Antibody (N-term) - Protein Information

Name TAF1D

Synonyms JOSD3

Function Component of the transcription factor SL1/TIF-IB complex, which is involved in the assembly of the PIC (preinitiation complex) during RNA polymerase I-dependent transcription. The rate of PIC formation probably is primarily dependent on the rate of association of SL1/TIF-IB with the rDNA promoter. SL1/TIF-IB is involved in stabilization of nucleolar transcription factor 1/UBTF on rDNA. Formation of SL1/TIF-IB excludes the association of TBP with TFIID subunits.

Cellular Location

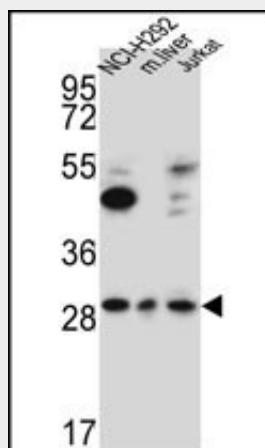
Nucleus

TAF1D Antibody (N-term) - Protocols

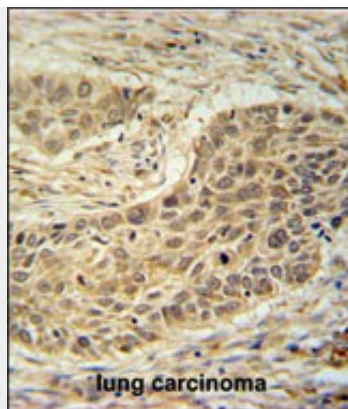
Provided below are standard protocols that you may find useful for product applications.

- [Western Blot](#)
- [Blocking Peptides](#)
- [Dot Blot](#)
- [Immunohistochemistry](#)
- [Immunofluorescence](#)
- [Immunoprecipitation](#)
- [Flow Cytometry](#)
- [Cell Culture](#)

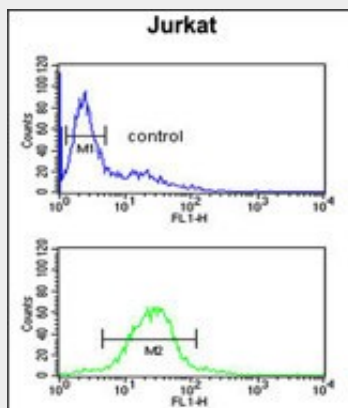
TAF1D Antibody (N-term) - Images



TAF1D Antibody (N-term) (Cat. #AP5597a) western blot analysis in NCI-H292, Jurkat cell line and mouse liver lysates (15ug/lane). This demonstrates the TAF1D antibody detected the TAF1D protein (arrow).



TAF1D Antibody (N-term) (Cat. #AP5597a) immunohistochemistry analysis in formalin fixed and paraffin embedded human lung carcinoma followed by peroxidase conjugation of the secondary antibody and DAB staining. This data demonstrates the use of the TAF1D Antibody (N-term) for immunohistochemistry. Clinical relevance has not been evaluated.



TAF1D Antibody (N-term) (Cat. #AP5597a) flow cytometric analysis of Jurkat cells (bottom histogram) compared to a negative control cell (top histogram). FITC-conjugated goat-anti-rabbit secondary antibodies were used for the analysis.

TAF1D Antibody (N-term) - Background

TAF1D is a member of the SL1 complex, which includes TBP (MIM 600075) and TAF1A (MIM 604903), TAF1B (MIM 604904), and TAF1C (MIM 604905), and plays a role in RNA polymerase I transcription (Wang et al., 2004 [PubMed 15520167]; Gorski et al., 2007 [PubMed 17318177]).

TAF1D Antibody (N-term) - References

Gorski, J.J., et al. EMBO J. 26(6):1560-1568(2007)
Wang, L., et al. Cancer Res. 64(21):7673-7677(2004)