

HERC6 Polyclonal Antibody
Purified Rabbit Polyclonal Antibody (Pab)
Catalog # AP56009**Specification****HERC6 Polyclonal Antibody - Product Information**

Application	WB, IHC-P, IHC-F, IF, ICC, E
Primary Accession	Q8IVU3
Reactivity	Rat, Pig
Host	Rabbit
Clonality	Polyclonal
Calculated MW	115 KDa
Physical State	Liquid
Immunogen	KLH conjugated synthetic peptide derived from human HERC6
Epitope Specificity	751-850/1022
Isotype	IgG
Purity	
affinity purified by Protein A	
Buffer	0.01M TBS (pH7.4) with 1% BSA, 0.02% Proclin300 and 50% Glycerol.
SUBCELLULAR LOCATION	Cytoplasm, cytosol.
SIMILARITY	Contains 1 HECT (E6AP-type E3 ubiquitin-protein ligase) domain.Contains 5 RCC1 repeats.
Important Note	This product as supplied is intended for research use only, not for use in human, therapeutic or diagnostic applications.

HERC6 Polyclonal Antibody - Additional Information**Gene ID** 55008**Other Names**

Probable E3 ubiquitin-protein ligase HERC6, 2.3.2.26, HECT domain and RCC1-like domain-containing protein 6, HECT-type E3 ubiquitin transferase HERC6, HERC6

Target/Specificity

Detected in brain, heart, placenta and testis.

Dilution

WB~~1:1000<br \>IHC-P~~N/A<br \>IHC-F~~N/A<br \>IF~~1:50~200<br \>ICC~~N/A<br \>E~~N/A

Format

0.01M TBS(pH7.4), 0.09% (W/V) sodium azide and 50% Glyce

Storage

Store at -20 °C for one year. Avoid repeated freeze/thaw cycles. When reconstituted in sterile pH 7.4 0.01M PBS or diluent of antibody the antibody is stable for at least two weeks at 2-4 °C.

HERC6 Polyclonal Antibody - Protein Information

Name HERC6

Function

E3 ubiquitin-protein ligase which accepts ubiquitin from an E2 ubiquitin-conjugating enzyme in the form of a thioester and then directly transfers the ubiquitin to targeted substrates.

Cellular Location

Cytoplasm, cytosol.

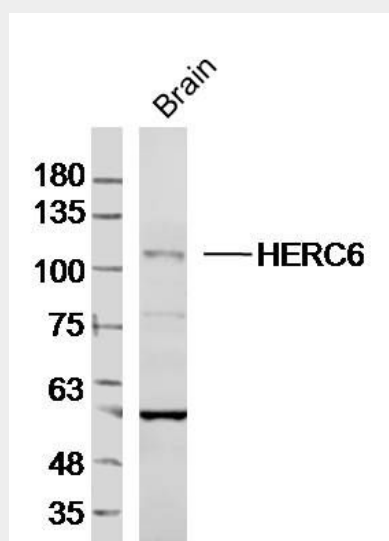
Tissue Location

Detected in brain, heart, placenta and testis.

HERC6 Polyclonal Antibody - Protocols

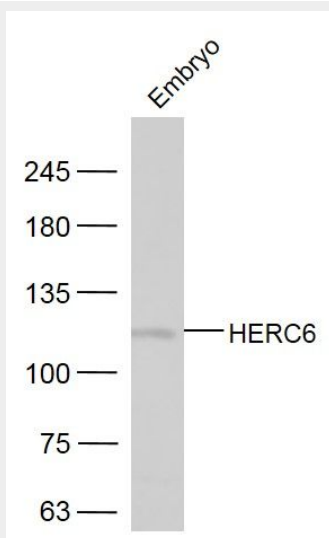
Provided below are standard protocols that you may find useful for product applications.

- [Western Blot](#)
- [Blocking Peptides](#)
- [Dot Blot](#)
- [Immunohistochemistry](#)
- [Immunofluorescence](#)
- [Immunoprecipitation](#)
- [Flow Cytometry](#)
- [Cell Culture](#)

HERC6 Polyclonal Antibody - Images

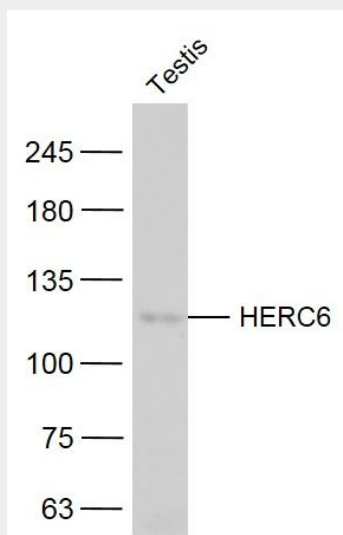
Sample: Brain (Mouse) Lysate at 40 ug
Primary: Anti-HERC6(bs-15463R) at 1/300 dilution

Secondary: IRDye800CW Goat Anti-Rabbit IgG at 1/20000 dilution
Predicted band size: 115kD
Observed band size: 115kD



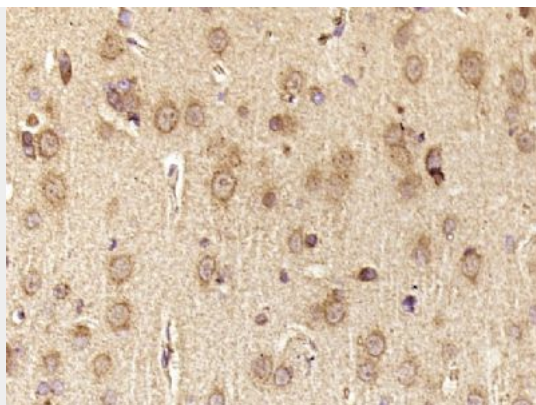
Sample:

Embryo (Mouse) Lysate at 40 ug
Primary: Anti-HERC6 (bs-15463R) at 1/300 dilution
Secondary: IRDye800CW Goat Anti-Rabbit IgG at 1/20000 dilution
Predicted band size: 115 kD
Observed band size: 115 kD



Sample:

Testis (Mouse) Lysate at 40 ug
Primary: Anti-HERC6 (bs-15463R) at 1/300 dilution
Secondary: IRDye800CW Goat Anti-Rabbit IgG at 1/20000 dilution
Predicted band size: 115 kD
Observed band size: 115 kD



Paraformaldehyde-fixed, paraffin embedded (Rat brain); Antigen retrieval by boiling in sodium citrate buffer (pH6.0) for 15min; Block endogenous peroxidase by 3% hydrogen peroxide for 20 minutes; Blocking buffer (normal goat serum) at 37°C for 30min; Antibody incubation with (HERC6) Polyclonal Antibody, Unconjugated (bs-15463R) at 1:400 overnight at 4°C, followed by operating according to SP Kit(Rabbit) (sp-0023) instructions and DAB staining.