

**IBTK Polyclonal Antibody**  
**Purified Rabbit Polyclonal Antibody (Pab)**  
**Catalog # AP56031****Specification**

---

**IBTK Polyclonal Antibody - Product Information**

Application	WB, IHC-P, IHC-F, IF, ICC, E
Primary Accession	<a href="#">Q9P2D0</a>
Reactivity	Rat, Pig
Host	Rabbit
Clonality	Polyclonal
Calculated MW	150528

**IBTK Polyclonal Antibody - Additional Information****Gene ID** 25998**Other Names**

Inhibitor of Bruton tyrosine kinase, IBtk, IBTK, BTKI, KIAA1417

**Dilution**

<span class = "dilution\_WB">WB~~1:1000</span><br \><span class = "dilution\_IHC-P">IHC-P~~N/A</span><br \><span class = "dilution\_IHC-F">IHC-F~~N/A</span><br \><span class = "dilution\_IF">IF~~1:50~200</span><br \><span class = "dilution\_ICC">ICC~~N/A</span><br \><span class = "dilution\_E">E~~N/A</span>

**Format**

0.01M TBS(pH7.4), 0.09% (W/V) sodium azide and 50% Glyce

**Storage**

Store at -20 °C for one year. Avoid repeated freeze/thaw cycles. When reconstituted in sterile pH 7.4 0.01M PBS or diluent of antibody the antibody is stable for at least two weeks at 2-4 °C.

**IBTK Polyclonal Antibody - Protein Information****Name** IBTK**Synonyms** BTKI, KIAA1417**Function**

Acts as an inhibitor of BTK tyrosine kinase activity, thereby playing a role in B-cell development. Down-regulates BTK kinase activity, leading to interference with BTK-mediated calcium mobilization and NF-kappa-B-driven transcription.

**Cellular Location**

Cytoplasm. Membrane; Peripheral membrane protein. Note=Translocates to the plasma membrane upon IgM stimulation

### Tissue Location

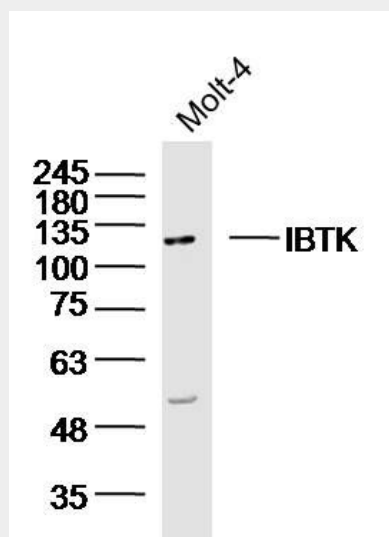
Expressed in DeFew, HEK293T, HeLa and in Jurkat, MC3 and NB4 lymphoid cells (at protein level). Isoform 1 is the predominant isoform expressed in all examined tissues and cell lines Highly expressed in hemopoietic tissues (fetal liver, spleen, lymph node, thymus, peripheral blood leukocytes and bone marrow). Weakly or not expressed in other tissues.

### IBTK Polyclonal Antibody - Protocols

Provided below are standard protocols that you may find useful for product applications.

- [Western Blot](#)
- [Blocking Peptides](#)
- [Dot Blot](#)
- [Immunohistochemistry](#)
- [Immunofluorescence](#)
- [Immunoprecipitation](#)
- [Flow Cytometry](#)
- [Cell Culture](#)

### IBTK Polyclonal Antibody - Images



Sample: Molt-4 Cell (Human) Lysate at 40 ug  
Primary: Anti-IBTK(bs-15532R) at 1/300 dilution  
Secondary: IRDye800CW Goat Anti-Rabbit IgG at 1/20000 dilution  
Predicted band size: 150kD  
Observed band size: 133kD