

**CENPC1 Polyclonal Antibody**  
**Purified Rabbit Polyclonal Antibody (Pab)**  
**Catalog # AP56038****Specification**

---

**CENPC1 Polyclonal Antibody - Product Information**

Application	WB, IHC-P, IHC-F, IF, ICC, E
Primary Accession	<a href="#">Q03188</a>
Reactivity	Rat, Dog
Host	Rabbit
Clonality	Polyclonal
Calculated MW	107 KDa
Physical State	Liquid
Immunogen	KLH conjugated synthetic peptide derived from human CENPC1
Epitope Specificity	701-800/943
Isotype	IgG
<b>Purity</b>	
affinity purified by Protein A	
Buffer	0.01M TBS (pH7.4) with 1% BSA, 0.02% Proclin300 and 50% Glycerol.
SUBCELLULAR LOCATION	Nucleus. Chromosome, centromere, kinetochore. Note=Localizes exclusively in the kinetochore domain of centromeres. Belongs to the CENPC family.
SIMILARITY	Oligomer. Component of the CENPA-NAC complex, at least composed of CENPA, CENPC, CENPH, CENPM, CENPN, CENPT and MLF1IP/CENPU. The CENPA-NAC complex interacts with the CENPA-CAD complex, composed of CENPI, CENPK, CENPL, CENPO, CENPP, CENPQ, CENPR and CENPS. Binds to DAXX. Interacts directly with CENPA.
SUBUNIT	
Important Note	This product as supplied is intended for research use only, not for use in human, therapeutic or diagnostic applications.

**Background Descriptions**

Centromere protein C 1 is a centromere autoantigen and a component of the inner kinetochore plate. The protein is required for maintaining proper kinetochore size and a timely transition to anaphase. A putative pseudogene exists on chromosome 12.

**CENPC1 Polyclonal Antibody - Additional Information****Gene ID** 1060**Other Names**

Centromere protein C, CENP-C, Centromere autoantigen C, Centromere protein C 1, CENP-C 1,

Interphase centromere complex protein 7, CENPC, CENPC1, ICEN7

**Dilution**

<span class = "dilution\_WB">WB~~1:1000</span><br \><span class = "dilution\_IHC-P">IHC-P~~N/A</span><br \><span class = "dilution\_IHC-F">IHC-F~~N/A</span><br \><span class = "dilution\_IF">IF~~1:50~200</span><br \><span class = "dilution\_ICC">ICC~~N/A</span><br \><span class = "dilution\_E">E~~N/A</span>

**Format**

0.01M TBS(pH7.4), 0.09% (W/V) sodium azide and 50% Glyce

**Storage**

Store at -20 °C for one year. Avoid repeated freeze/thaw cycles. When reconstituted in sterile pH 7.4 0.01M PBS or diluent of antibody the antibody is stable for at least two weeks at 2-4 °C.

**CENPC1 Polyclonal Antibody - Protein Information**

**Name** CENPC

**Synonyms** CENPC1, ICEN7

**Function**

Component of the CENPA-NAC (nucleosome-associated) complex, a complex that plays a central role in assembly of kinetochore proteins, mitotic progression and chromosome segregation. The CENPA-NAC complex recruits the CENPA-CAD (nucleosome distal) complex and may be involved in incorporation of newly synthesized CENPA into centromeres. CENPC recruits DNA methylation and DNMT3B to both centromeric and pericentromeric satellite repeats and regulates the histone code in these regions.

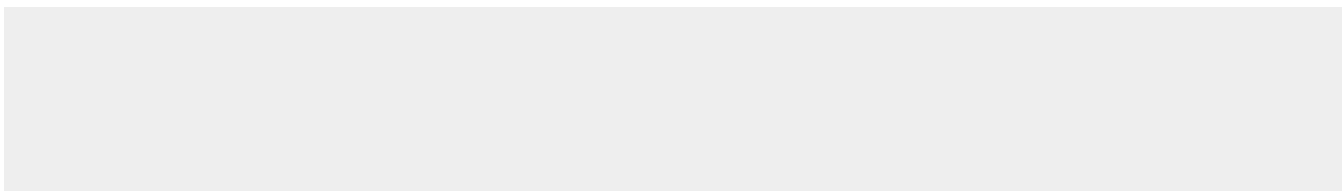
**Cellular Location**

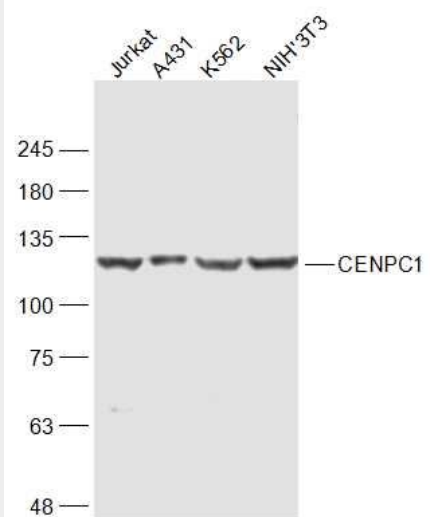
Nucleus. Chromosome, centromere, kinetochore. Chromosome, centromere. Note=Localizes exclusively in the kinetochore domain of centromeres.

**CENPC1 Polyclonal Antibody - Protocols**

Provided below are standard protocols that you may find useful for product applications.

- [Western Blot](#)
- [Blocking Peptides](#)
- [Dot Blot](#)
- [Immunohistochemistry](#)
- [Immunofluorescence](#)
- [Immunoprecipitation](#)
- [Flow Cytometry](#)
- [Cell Culture](#)

**CENPC1 Polyclonal Antibody - Images**



**Sample:**

Jurkat(Human) Cell Lysate at 30 ug

A431(Human) Cell Lysate at 30 ug

K562(Human) Cell Lysate at 30 ug

NIH/3T3(Mouse) Cell Lysate at 30 ug

Primary: Anti-CENPC1 (bs-15555R) at 1/1000 dilution

Secondary: IRDye800CW Goat Anti-Rabbit IgG at 1/20000 dilution

Predicted band size: 107 kD

Observed band size: 120 kD