

OLFM2 Polyclonal Antibody
Purified Rabbit Polyclonal Antibody (Pab)
Catalog # AP56054**Specification**

OLFM2 Polyclonal Antibody - Product Information

Application	WB, IHC-P
Primary Accession	O95897
Reactivity	Rat
Host	Rabbit
Clonality	Polyclonal
Calculated MW	51386

OLFM2 Polyclonal Antibody - Additional Information**Gene ID** 93145**Other Names**

Noelin-2, Olfactomedin-2, OLFM2, NOE2

Format

0.01M TBS(pH7.4), 0.09% (W/V) sodium azide and 50% Glyce

Storage

Store at -20 °C for one year. Avoid repeated freeze/thaw cycles. When reconstituted in sterile pH 7.4 0.01M PBS or diluent of antibody the antibody is stable for at least two weeks at 2-4 °C.

OLFM2 Polyclonal Antibody - Protein Information**Name** OLFM2**Synonyms** NOE2**Function**

Involved in transforming growth factor beta (TGF-beta)- induced smooth muscle differentiation. TGF-beta induces expression and translocation of OLFM2 to the nucleus where it binds to SRF, causing its dissociation from the transcriptional repressor HEY2/HERP1 and facilitating binding of SRF to target genes (PubMed:25298399). Plays a role in AMPAR complex organization (By similarity). Is a regulator of vascular smooth-muscle cell (SMC) phenotypic switching, that acts by promoting RUNX2 and inhibiting MYOCD binding to SRF. SMC phenotypic switching is the process through which vascular SMCs undergo transition between a quiescent contractile phenotype and a proliferative synthetic phenotype in response to pathological stimuli. SMC phenotypic plasticity is essential for vascular development and remodeling (By similarity).

Cellular Location

Secreted. Synapse {ECO:0000250|UniProtKB:Q8BM13}. Membrane {ECO:0000250|UniProtKB:Q8BM13}. Nucleus Cytoplasm. Note=Nuclear localization is induced by

TGF-beta.

Tissue Location

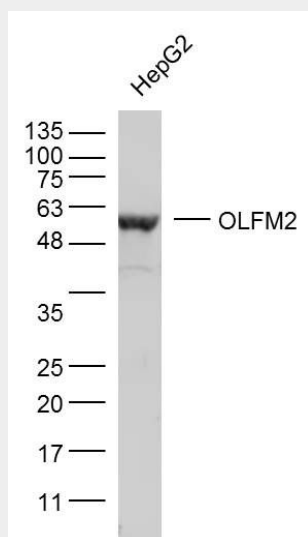
Expressed in aortic smooth muscle (at protein level) (PubMed:25298399). In the fetus, expressed in the brain and ocular tissues including lens vesicle and optic cup (PubMed:27844144)

OLFM2 Polyclonal Antibody - Protocols

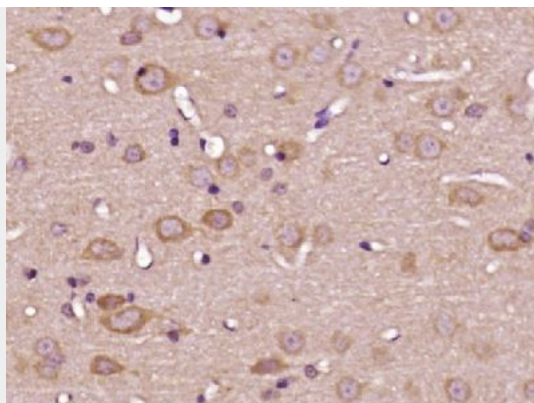
Provided below are standard protocols that you may find useful for product applications.

- [Western Blot](#)
- [Blocking Peptides](#)
- [Dot Blot](#)
- [Immunohistochemistry](#)
- [Immunofluorescence](#)
- [Immunoprecipitation](#)
- [Flow Cytometry](#)
- [Cell Culture](#)

OLFM2 Polyclonal Antibody - Images



Sample: HepG2 (human) cell Lysate at 40 ug
Primary: Anti- OLFM2 (bs-15973R) at 1/300 dilution
Secondary: IRDye800CW Goat Anti-Rabbit IgG at 1/20000 dilution
Predicted band size: 49 kD
Observed band size: 54 kD



Paraformaldehyde-fixed, paraffin embedded (Rat brain); Antigen retrieval by boiling in sodium citrate buffer (pH6.0) for 15min; Block endogenous peroxidase by 3% hydrogen peroxide for 20 minutes; Blocking buffer (normal goat serum) at 37°C for 30min; Antibody incubation with (OLFM2) Polyclonal Antibody, Unconjugated (bs-15973R) at 1:400 overnight at 4°C, followed by operating according to SP Kit(Rabbit) (sp-0023) instructions and DAB staining.