

**Gamma-Adaptin Polyclonal Antibody**  
**Purified Rabbit Polyclonal Antibody (Pab)**  
**Catalog # AP56062****Specification**

---

**Gamma-Adaptin Polyclonal Antibody - Product Information**

Application	WB, IHC-P, ICC
Primary Accession	<a href="#">P22892</a>
Reactivity	Rat, Pig, Dog, Bovine
Host	Rabbit
Clonality	Polyclonal
Calculated MW	91350

**Gamma-Adaptin Polyclonal Antibody - Additional Information****Gene ID** 11765**Other Names**

AP-1 complex subunit gamma-1, Adaptor protein complex AP-1 subunit gamma-1, Adaptor-related protein complex 1 subunit gamma-1, Clathrin assembly protein complex 1 gamma-1 large chain, Gamma-adaptin, Gamma1-adaptin, Golgi adaptor HA1/AP1 adaptin subunit gamma-1, Ap1g1, Adtg, Clapg1

**Format**

0.01M TBS(pH7.4), 0.09% (W/V) sodium azide and 50% Glyce

**Storage**

Store at -20 °C for one year. Avoid repeated freeze/thaw cycles. When reconstituted in sterile pH 7.4 0.01M PBS or diluent of antibody the antibody is stable for at least two weeks at 2-4 °C.

**Gamma-Adaptin Polyclonal Antibody - Protein Information****Name** Ap1g1**Synonyms** Adtg, Clapg1**Function**

Subunit of clathrin-associated adaptor protein complex 1 that plays a role in protein sorting in the late-Golgi/trans-Golgi network (TGN) and/or endosomes. The AP complexes mediate both the recruitment of clathrin to membranes and the recognition of sorting signals within the cytosolic tails of transmembrane cargo molecules. In association with AFTPH/aftiphilin in the aftiphilin/p200/gamma-synerglin complex, involved in the trafficking of transferrin from early to recycling endosomes, and the membrane trafficking of furin and the lysosomal enzyme cathepsin D between the trans-Golgi network (TGN) and endosomes (By similarity).

**Cellular Location**

Golgi apparatus {ECO:0000250|UniProtKB:O43747}. Cytoplasmic vesicle, clathrin-coated vesicle membrane {ECO:0000250|UniProtKB:O43747}; Peripheral membrane protein

{ECO:0000250|UniProtKB:O43747}; Cytoplasmic side {ECO:0000250|UniProtKB:O43747}. Cytoplasm {ECO:0000250|UniProtKB:O43747}. Cytoplasm, perinuclear region {ECO:0000250|UniProtKB:O43747}. Cytoplasmic vesicle, clathrin-coated vesicle {ECO:0000250|UniProtKB:O43747}. Membrane, clathrin-coated pit {ECO:0000250|UniProtKB:O43747}. Note=Component of the coat surrounding the cytoplasmic face of coated vesicles located at the Golgi complex (By similarity). Co-localizes with AFTPH/aftiphilin in the cytoplasm (By similarity). {ECO:0000250|UniProtKB:O43747}

#### **Tissue Location**

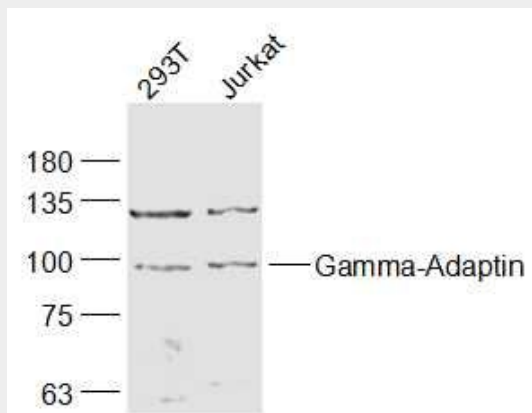
Widely expressed.

#### **Gamma-Adaptin Polyclonal Antibody - Protocols**

Provided below are standard protocols that you may find useful for product applications.

- [Western Blot](#)
- [Blocking Peptides](#)
- [Dot Blot](#)
- [Immunohistochemistry](#)
- [Immunofluorescence](#)
- [Immunoprecipitation](#)
- [Flow Cytometry](#)
- [Cell Culture](#)

#### **Gamma-Adaptin Polyclonal Antibody - Images**



#### **Sample:**

293T(Human) Cell Lysate at 30 ug

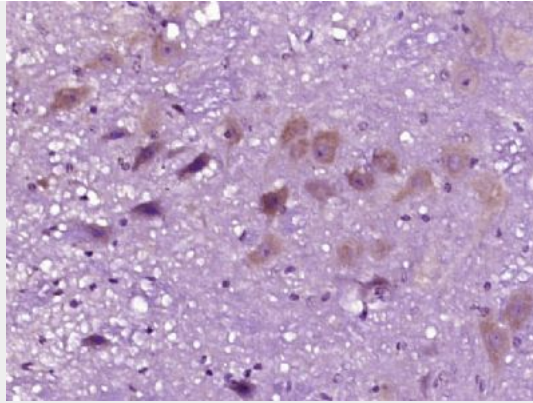
Jurkat(Human) Cell Lysate at 30 ug

Primary: Anti-Gamma-Adaptin (bs-1600R) at 1/1000 dilution

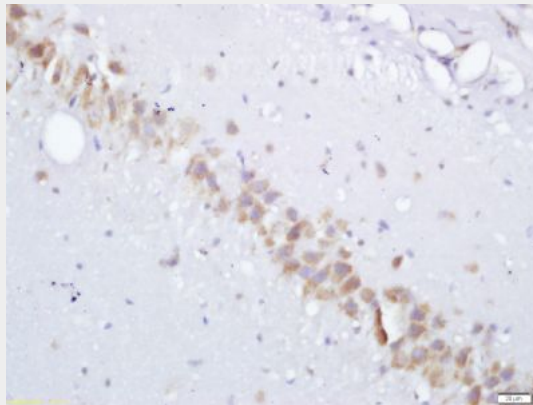
Secondary: IRDye800CW Goat Anti-Rabbit IgG at 1/20000 dilution

Predicted band size: 91 kD

Observed band size: 91 kD



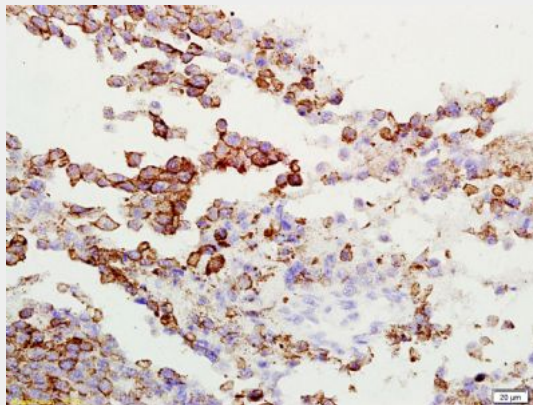
Paraformaldehyde-fixed, paraffin embedded (mouse brain tissue); Antigen retrieval by boiling in sodium citrate buffer (pH6.0) for 15min; Block endogenous peroxidase by 3% hydrogen peroxide for 20 minutes; Blocking buffer (normal goat serum) at 37°C for 30min; Antibody incubation with (Gamma-Adaptin) Polyclonal Antibody, Unconjugated (bs-1600R) at 1:400 overnight at 4°C, followed by operating according to SP Kit(Rabbit) (sp-0023) instructions and DAB staining.



Tissue/cell: Rat brain; 4% Paraformaldehyde-fixed and paraffin-embedded;

Antigen retrieval: citrate buffer ( 0.01M, pH 6.0 ), Boiling bathing for 15min; Block endogenous peroxidase by 3% Hydrogen peroxide for 30min; Blocking buffer (normal goat serum,C-0005) at 37°C for 20 min;

Incubation: Anti- Gamma-Adaptin, Unconjugated(bs-1600R) 1:200, overnight at 4°C, followed by conjugation to the secondary antibody(SP-0023) and DAB(C-0010) staining

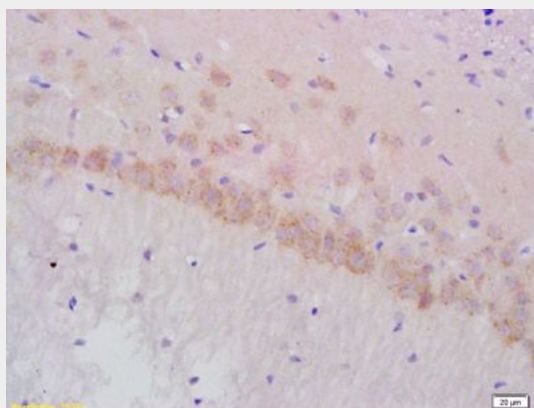


Tissue/cell: rat lung carcinoma; 4% Paraformaldehyde-fixed and paraffin-embedded;

Antigen retrieval: citrate buffer ( 0.01M, pH 6.0 ), Boiling bathing for 15min; Block endogenous peroxidase by 3% Hydrogen peroxide for 30min; Blocking buffer (normal goat serum,C-0005) at

37°C for 20 min;

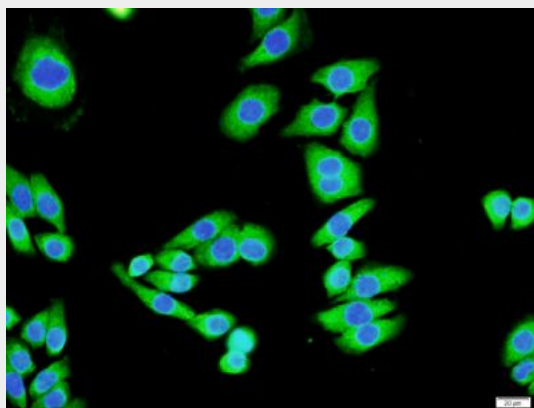
Incubation: Anti-Gamma-Adaptin Polyclonal Antibody, Unconjugated(bs-1600R) 1:200, overnight at 4°C, followed by conjugation to the secondary antibody(SP-0023) and DAB(C-0010) staining



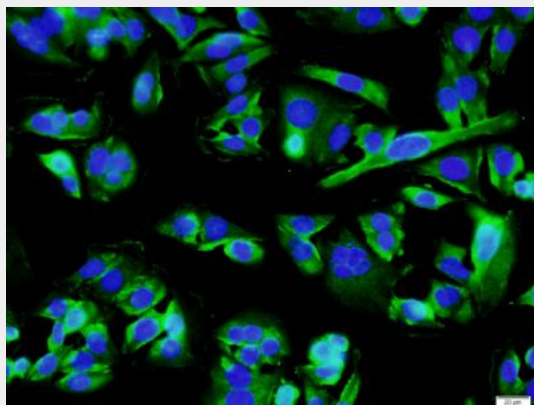
Tissue/cell: rat brain tissue; 4% Paraformaldehyde-fixed and paraffin-embedded;

Antigen retrieval: citrate buffer ( 0.01M, pH 6.0 ), Boiling bathing for 15min; Block endogenous peroxidase by 3% Hydrogen peroxide for 30min; Blocking buffer (normal goat serum,C-0005) at 37°C for 20 min;

Incubation: Anti-Gamma-Adaptin Polyclonal Antibody, Unconjugated(bs-1600R) 1:200, overnight at 4°C, followed by conjugation to the secondary antibody(SP-0023) and DAB(C-0010) staining



Cell culture(MCF7); Paraformaldehyde-fixed; Incubated by 0.3% Triton-100 for 20 min; Blocking buffer (normal goat serum) at 37°C for 30min; Antibody incubation with (Gamma-Adaptin) Polyclonal Antibody, Unconjugated (bs-1600R) at 1:200 overnight at 4°C, followed by a conjugated secondary antibody (bs-0295G-FITC) for 90 minutes and DAPI staining.



Cell culture(SW480); Paraformaldehyde-fixed; Incubated by 0.3% Triton-100 for 20 min; Blocking buffer (normal goat serum) at 37°C for 30min; Antibody incubation with (Gamma-Adaptin) Polyclonal Antibody, Unconjugated (bs-1600R) at 1:200 overnight at 4°C, followed by a conjugated secondary antibody (bs-0295G-FITC) for 90 minutes and DAPI staining.