

**FARSLB Polyclonal Antibody**  
**Purified Rabbit Polyclonal Antibody (Pab)**  
**Catalog # AP56074**

**Specification**

**FARSLB Polyclonal Antibody - Product Information**

|                                |   |
|--------------------------------|---|
| Application                    | WB, IHC-P, IHC-F, IF, ICC   |
| Primary Accession              | <a href="#">Q9NSD9</a>  |
| Reactivity                     | Rat, Dog, Bovine  |
| Host                           | Rabbit  |
| Clonality                      | Polyclonal  |
| Calculated MW                  | 66 KDa  |
| Physical State                 | Liquid  |
| Immunogen                      | KLH conjugated synthetic peptide derived from human FARSLB  |
| Epitope Specificity            | 101-200/589   |
| Isotype                        | IgG   |
| <b>Purity</b>                  |   |
| affinity purified by Protein A |   |
| Buffer                         | 0.01M TBS (pH7.4) with 1% BSA, 0.02% Proclin300 and 50% Glycerol.   |
| SUBCELLULAR LOCATION           | Cytoplasm.  |
| SIMILARITY                     | Belongs to the phenylalanyl-tRNA synthetase beta chain family. Type 2 subfamily. Contains 1 B5 domain.                    |
| Important Note                 | This product as supplied is intended for research use only, not for use in human, therapeutic or diagnostic applications. |

**Background Descriptions**

This gene encodes a highly conserved enzyme that belongs to the aminoacyl-tRNA synthetase class IIc subfamily. This enzyme comprises the regulatory beta subunits that form a tetramer with two catalytic alpha subunits. In the presence of ATP, this tetramer is responsible for attaching L-phenylalanine to the terminal adenosine of the appropriate tRNA. A pseudogene located on chromosome 10 has been identified. [provided by RefSeq, Jul 2008]

**FARSLB Polyclonal Antibody - Additional Information**

**Gene ID** 10056

**Other Names**

Phenylalanine--tRNA ligase beta subunit, 6.1.1.20, Phenylalanyl-tRNA synthetase beta subunit, PheRS, FARSB, FARSLB, FRSB

**Dilution**

<span class = "dilution\_WB">WB~~1:1000</span><br \><span class = "dilution\_IHC-P">IHC-P~~N/A</span><br \><span class = "dilution\_IHC-F">IHC-F~~N/A</span><br \><span class = "dilution\_IF">IF~~1:50~200</span><br \><span class = "dilution\_ICC">ICC~~N/A</span>

**Format**

0.01M TBS(pH7.4), 0.09% (W/V) sodium azide and 50% Glyce

**Storage**

Store at -20 °C for one year. Avoid repeated freeze/thaw cycles. When reconstituted in sterile pH 7.4 0.01M PBS or diluent of antibody the antibody is stable for at least two weeks at 2-4 °C.

**FARSLB Polyclonal Antibody - Protein Information**

**Name** FARSB

**Synonyms** FARSLB, FRSB

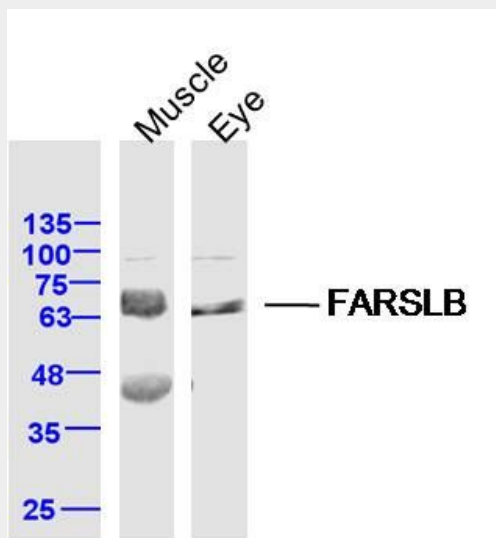
**Cellular Location**

Cytoplasm.

**FARSLB Polyclonal Antibody - Protocols**

Provided below are standard protocols that you may find useful for product applications.

- [Western Blot](#)
- [Blocking Peptides](#)
- [Dot Blot](#)
- [Immunohistochemistry](#)
- [Immunofluorescence](#)
- [Immunoprecipitation](#)
- [Flow Cytometry](#)
- [Cell Culture](#)

**FARSLB Polyclonal Antibody - Images**

Sample:

Muscle (Mouse) Lysate at 40 ug

Eye (Mouse) Lysate at 40 ug

Primary: Anti-FARSLB (bs-16027R) at 1/300 dilution

Secondary: IRDye800CW Goat Anti-Rabbit IgG at 1/20000 dilution  
Predicted band size: 66 kD  
Observed band size: 66 kD