

**FbxL6 Polyclonal Antibody**  
**Purified Rabbit Polyclonal Antibody (Pab)**  
**Catalog # AP56086****Specification****FbxL6 Polyclonal Antibody - Product Information**

Application	WB, IHC-P, IHC-F, IF, ICC
Primary Accession	<a href="#">Q8N531</a>
Reactivity	Rat, Pig, Dog
Host	Rabbit
Clonality	Polyclonal
Calculated MW	59 KDa
Physical State	Liquid
Immunogen	KLH conjugated synthetic peptide derived from human FbxL6
Epitope Specificity	441-539/539
Isotype	IgG
<b>Purity</b>	
affinity purified by Protein A	
Buffer	0.01M TBS (pH7.4) with 1% BSA, 0.02% Proclin300 and 50% Glycerol.
SIMILARITY	Contains 1 F-box domain. Contains 11 LRR (leucine-rich) repeats.
Important Note	This product as supplied is intended for research use only, not for use in human, therapeutic or diagnostic applications.

**Background Descriptions**

This gene encodes a member of a family of proteins that are characterized by an F-box motif. The encoded protein also contains leucine-rich repeats. F-box-containing proteins comprise one of the subunits of the SCF (SKP1-cullin-F-box) complex, which functions in phosphorylation-dependent ubiquitination. Alternative splicing results in multiple transcript variants. [provided by RefSeq, Jul 2013]

**FbxL6 Polyclonal Antibody - Additional Information****Gene ID** 26233**Other Names**

F-box/LRR-repeat protein 6, F-box and leucine-rich repeat protein 6, F-box protein FBL6, FBL6A, FBXL6, FBL6

**Dilution**

<span class = "dilution\_WB">WB~~1:1000</span><br \><span class = "dilution\_IHC-P">IHC-P~~N/A</span><br \><span class = "dilution\_IHC-F">IHC-F~~N/A</span><br \><span class = "dilution\_IF">IF~~1:50~200</span><br \><span class = "dilution\_ICC">ICC~~N/A</span>

**Format**

0.01M TBS(pH7.4), 0.09% (W/V) sodium azide and 50% Glyce

#### Storage

Store at -20 °C for one year. Avoid repeated freeze/thaw cycles. When reconstituted in sterile pH 7.4 0.01M PBS or diluent of antibody the antibody is stable for at least two weeks at 2-4 °C.

### FbxL6 Polyclonal Antibody - Protein Information

**Name** FBXL6 ([HGNC:13603](#))

**Synonyms** FBL6

#### Function

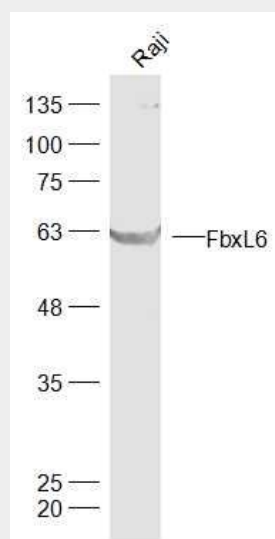
Substrate-recognition component of the SCF (SKP1-CUL1-F-box protein)-type E3 ubiquitin ligase complex.

### FbxL6 Polyclonal Antibody - Protocols

Provided below are standard protocols that you may find useful for product applications.

- [Western Blot](#)
- [Blocking Peptides](#)
- [Dot Blot](#)
- [Immunohistochemistry](#)
- [Immunofluorescence](#)
- [Immunoprecipitation](#)
- [Flow Cytometry](#)
- [Cell Culture](#)

### FbxL6 Polyclonal Antibody - Images



Sample:

Raji(Human) Cell Lysate at 30 ug

Primary: Anti-FbxL6 (bs-16041R) at 1/300 dilution

Secondary: IRDye800CW Goat Anti-Rabbit IgG at 1/20000 dilution

Predicted band size: 59 kD  
Observed band size: 59 kD