

FGD1 Polyclonal Antibody
Purified Rabbit Polyclonal Antibody (Pab)
Catalog # AP56107**Specification**

FGD1 Polyclonal Antibody - Product Information

Application	WB, IHC-P, IHC-F, IF, ICC
Primary Accession	P98174
Reactivity	Rat, Pig, Dog, Bovine
Host	Rabbit
Clonality	Polyclonal
Calculated MW	106561

FGD1 Polyclonal Antibody - Additional Information**Gene ID** 2245**Other Names**

FYVE, RhoGEF and PH domain-containing protein 1, Faciogenital dysplasia 1 protein, Rho/Rac guanine nucleotide exchange factor FGD1, Rho/Rac GEF, Zinc finger FYVE domain-containing protein 3, FGD1, FGDY, ZFYVE3

Dilution

WB~1:1000<br \>IHC-P~N/A<br \>IHC-F~N/A<br \>IF~1:50~200<br \>ICC~N/A

Format

0.01M TBS(pH7.4), 0.09% (W/V) sodium azide and 50% Glyce

Storage

Store at -20 °C for one year. Avoid repeated freeze/thaw cycles. When reconstituted in sterile pH 7.4 0.01M PBS or diluent of antibody the antibody is stable for at least two weeks at 2-4 °C.

FGD1 Polyclonal Antibody - Protein Information**Name** FGD1**Synonyms** FGDY, ZFYVE3**Function**

Activates CDC42, a member of the Ras-like family of Rho- and Rac proteins, by exchanging bound GDP for free GTP. Plays a role in regulating the actin cytoskeleton and cell shape.

Cellular Location

Cytoplasm. Cell projection, lamellipodium. Cell projection, ruffle Cytoplasm, cytoskeleton.
Note=Associated with membrane ruffles and lamellipodia.

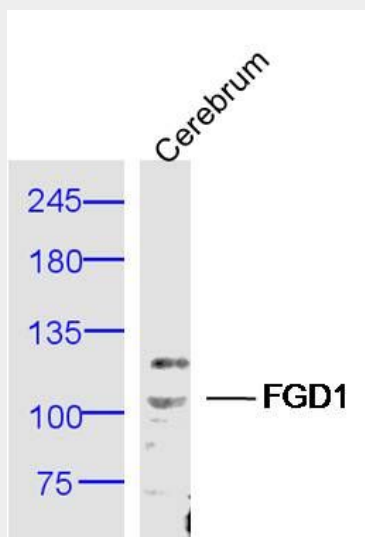
Tissue Location

Expressed in fetal heart, brain, lung, kidney and placenta. Less expressed in liver; adult heart, brain, lung, pancreas and skeletal muscle

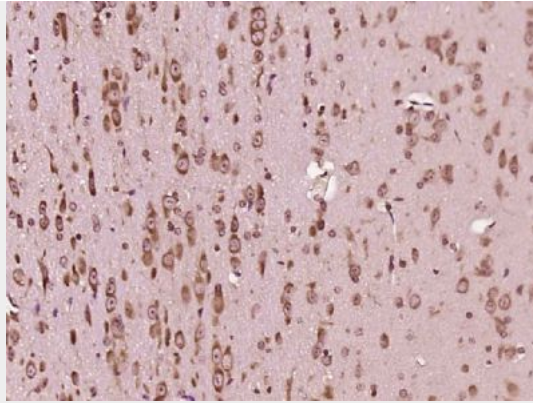
FGD1 Polyclonal Antibody - Protocols

Provided below are standard protocols that you may find useful for product applications.

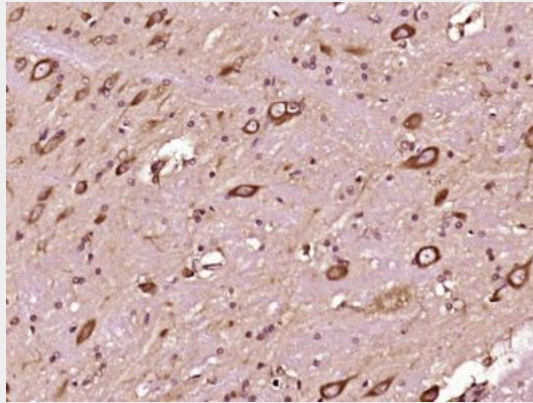
- [Western Blot](#)
- [Blocking Peptides](#)
- [Dot Blot](#)
- [Immunohistochemistry](#)
- [Immunofluorescence](#)
- [Immunoprecipitation](#)
- [Flow Cytometry](#)
- [Cell Culture](#)

FGD1 Polyclonal Antibody - Images

Sample: Cerebrum (Mouse) Lysate at 40 ug
Primary: Anti-FGD1 (bs-16077R) at 1/300 dilution
Secondary: IRDye800CW Goat Anti-Rabbit IgG at 1/20000 dilution
Predicted band size: 107 kD
Observed band size: 107 kD



Paraformaldehyde-fixed, paraffin embedded (Mouse brain); Antigen retrieval by boiling in sodium citrate buffer (pH6.0) for 15min; Block endogenous peroxidase by 3% hydrogen peroxide for 20 minutes; Blocking buffer (normal goat serum) at 37°C for 30min; Antibody incubation with (FGD1) Polyclonal Antibody, Unconjugated (bs-16077R) at 1:500 overnight at 4°C, followed by a conjugated secondary (sp-0023) for 20 minutes and DAB staining.



Paraformaldehyde-fixed, paraffin embedded (Rat brain); Antigen retrieval by boiling in sodium citrate buffer (pH6.0) for 15min; Block endogenous peroxidase by 3% hydrogen peroxide for 20 minutes; Blocking buffer (normal goat serum) at 37°C for 30min; Antibody incubation with (FGD1) Polyclonal Antibody, Unconjugated (bs-16077R) at 1:400 overnight at 4°C, followed by operating according to SP Kit(Rabbit) (sp-0023) instructions and DAB staining.