

**FGD3 Polyclonal Antibody**  
**Purified Rabbit Polyclonal Antibody (Pab)**  
**Catalog # AP56109****Specification**

---

**FGD3 Polyclonal Antibody - Product Information**

Application	WB
Primary Accession	<a href="#">Q5JSP0</a>
Reactivity	Rat
Host	Rabbit
Clonality	Polyclonal
Calculated MW	79401

**FGD3 Polyclonal Antibody - Additional Information****Gene ID** 89846**Other Names**

FYVE, RhoGEF and PH domain-containing protein 3, Zinc finger FYVE domain-containing protein 5, FGD3, ZFYVE5

**Format**

0.01M TBS(pH7.4), 0.09% (W/V) sodium azide and 50% Glyce

**Storage**

Store at -20 °C for one year. Avoid repeated freeze/thaw cycles. When reconstituted in sterile pH 7.4 0.01M PBS or diluent of antibody the antibody is stable for at least two weeks at 2-4 °C.

**FGD3 Polyclonal Antibody - Protein Information****Name** FGD3**Synonyms** ZFYVE5**Function**

Promotes the formation of filopodia. May activate CDC42, a member of the Ras-like family of Rho- and Rac proteins, by exchanging bound GDP for free GTP. Plays a role in regulating the actin cytoskeleton and cell shape (By similarity).

**Cellular Location**

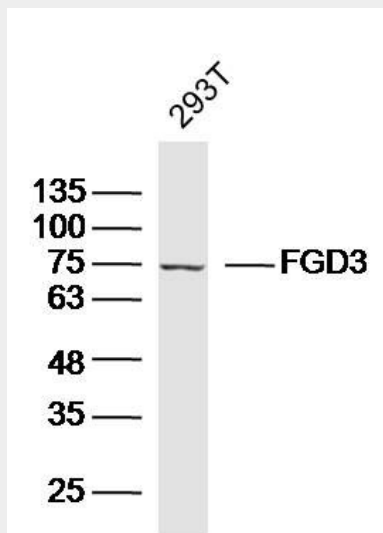
Cytoplasm. Cytoplasm, cytoskeleton

**FGD3 Polyclonal Antibody - Protocols**

Provided below are standard protocols that you may find useful for product applications.

- [Western Blot](#)
- [Blocking Peptides](#)
- [Dot Blot](#)
- [Immunohistochemistry](#)
- [Immunofluorescence](#)
- [Immunoprecipitation](#)
- [Flow Cytometry](#)
- [Cell Culture](#)

#### FGD3 Polyclonal Antibody - Images



Sample: 293T Cell (Human) Lysate at 40 ug  
Primary: Anti-FGD3 (bs-16079R) at 1/300 dilution  
Secondary: IRDye800CW Goat Anti-Rabbit IgG at 1/20000 dilution  
Predicted band size: 79 kD  
Observed band size: 75 kD