

**DI3L1 Antibody (N-term)**  
**Affinity Purified Rabbit Polyclonal Antibody (Pab)**  
**Catalog # AP5614a**

**Specification**

---

**DI3L1 Antibody (N-term) - Product Information**

Application	WB, IHC-P,E
Primary Accession	<a href="#">Q8TF46</a>
Other Accession	<a href="#">AQJN80</a> , <a href="#">NP_001137160.1</a>
Reactivity	Human, Mouse
Predicted	Bovine
Host	Rabbit
Clonality	Polyclonal
Isotype	Rabbit IgG
Calculated MW	120787
Antigen Region	195-224

**DI3L1 Antibody (N-term) - Additional Information**

**Gene ID** 115752

**Other Names**

DIS3-like exonuclease 1, 3113-, DIS3L, DIS3L1, KIAA1955

**Target/Specificity**

This DI3L1 antibody is generated from rabbits immunized with a KLH conjugated synthetic peptide between 195-224 amino acids from the N-terminal region of human DI3L1.

**Dilution**

WB~~1:1000

IHC-P~~1:50~100

E~~Use at an assay dependent concentration.

**Format**

Purified polyclonal antibody supplied in PBS with 0.09% (W/V) sodium azide. This antibody is purified through a protein A column, followed by peptide affinity purification.

**Storage**

Maintain refrigerated at 2-8°C for up to 2 weeks. For long term storage store at -20°C in small aliquots to prevent freeze-thaw cycles.

**Precautions**

DI3L1 Antibody (N-term) is for research use only and not for use in diagnostic or therapeutic procedures.

**DI3L1 Antibody (N-term) - Protein Information**

**Name** DIS3L

**Synonyms** DI3L1, KIAA1955

**Function** Catalytic component of the RNA exosome complex which has 3'→5' exoribonuclease activity and participates in a multitude of cellular RNA processing and degradation events (PubMed:[20531386](#), PubMed:[20531389](#), PubMed:[37602378](#)). In the cytoplasm, the RNA exosome complex is involved in general mRNA turnover and specifically degrades inherently unstable mRNAs containing AU-rich elements (AREs) within their 3' untranslated regions, and in RNA surveillance pathways, preventing translation of aberrant mRNAs. It seems to be involved in degradation of histone mRNA (PubMed:[20531386](#), PubMed:[20531389](#)).

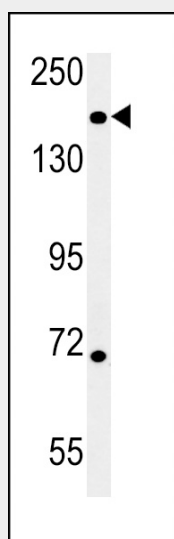
**Cellular Location**

Cytoplasm

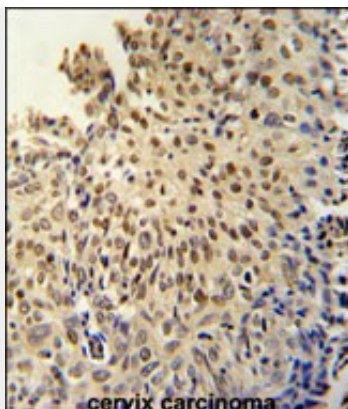
**DI3L1 Antibody (N-term) - Protocols**

Provided below are standard protocols that you may find useful for product applications.

- [Western Blot](#)
- [Blocking Peptides](#)
- [Dot Blot](#)
- [Immunohistochemistry](#)
- [Immunofluorescence](#)
- [Immunoprecipitation](#)
- [Flow Cytometry](#)
- [Cell Culture](#)

**DI3L1 Antibody (N-term) - Images**

DI3L1 Antibody (N-term) (Cat. #AP5614a) western blot analysis in mouse heart tissue lysates (15ug/lane). This demonstrates the DI3L1 antibody detected DI3L1 protein (arrow).



DI3L1 Antibody (N-term) (Cat. #AP5614a) immunohistochemistry analysis in formalin fixed and paraffin embedded human cervix carcinoma followed by peroxidase conjugation of the secondary antibody and DAB staining. This data demonstrates the use of the DI3L1 Antibody (N-term) for immunohistochemistry. Clinical relevance has not been evaluated.

#### **DI3L1 Antibody (N-term) - Background**

DIS3L is a probable exonuclease. It has four isoforms.

#### **DI3L1 Antibody (N-term) - References**

Oh, J.H., et al. Mamm. Genome 16(12):942-954(2005)