

FOXR2 Polyclonal Antibody
Purified Rabbit Polyclonal Antibody (Pab)
Catalog # AP56164

Specification

FOXR2 Polyclonal Antibody - Product Information

Application	WB, IHC-P, IHC-F, IF, ICC, E
Primary Accession	Q6PJQ5
Host	Rabbit
Clonality	Polyclonal
Calculated MW	36 KDa
Physical State	Liquid
Immunogen	KLH conjugated synthetic peptide derived from human FOXR2
Epitope Specificity	51-150/311
Isotype	IgG
Purity	
affinity purified by Protein A	
Buffer	0.01M TBS (pH7.4) with 1% BSA, 0.02% Proclin300 and 50% Glycerol.
SUBCELLULAR LOCATION	Nuclear
SIMILARITY	Contains 1 fork-head DNA-binding domain.
Important Note	This product as supplied is intended for research use only, not for use in human, therapeutic or diagnostic applications.

Background Descriptions

The Forkhead-box (FOX) genes comprise a superfamily of at least 43 members that express proteins which are involved in transcriptional regulation and may be associated with the pathogenesis of various cancers. FOXR2 (Forkhead box protein R2), also known as FOXN6 (Forkhead box protein N6), is a 311 amino acid nuclear protein that belongs to the FOX family and contains one fork-head DNA-binding domain. Like other members of the FOX family, FOXR2 is not abundantly expressed in normal tissues but is found at very high levels in breast cancer and primary cancer cell lines and is thought to act as a transcription factor. Through chromosomal aberrations such as retroviral integration, gene amplification or translocation, FOXR2 may be involved the development of certain invasive carcinomas.

FOXR2 Polyclonal Antibody - Additional Information

Gene ID 139628

Other Names

Forkhead box protein R2, Forkhead box protein N6, FOXR2, FOXN6

Target/Specificity

Expressed in breast cancer cell lines and primary cancer.

Dilution

WB~~1:1000<br \><span class

=IHC-P~~N/A<br \>IHC-F~~N/A<br \>IF~~1:50~200<br \>ICC~~N/A<br \>E~~N/A

Format

0.01M TBS(pH7.4), 0.09% (W/V) sodium azide and 50% Glyce

Storage

Store at -20 °C for one year. Avoid repeated freeze/thaw cycles. When reconstituted in sterile pH 7.4 0.01M PBS or diluent of antibody the antibody is stable for at least two weeks at 2-4 °C.

FOXR2 Polyclonal Antibody - Protein Information

Name FOXR2

Synonyms FOXN6

Cellular Location

Nucleus {ECO:0000255|PROSITE-ProRule:PRU00089}.

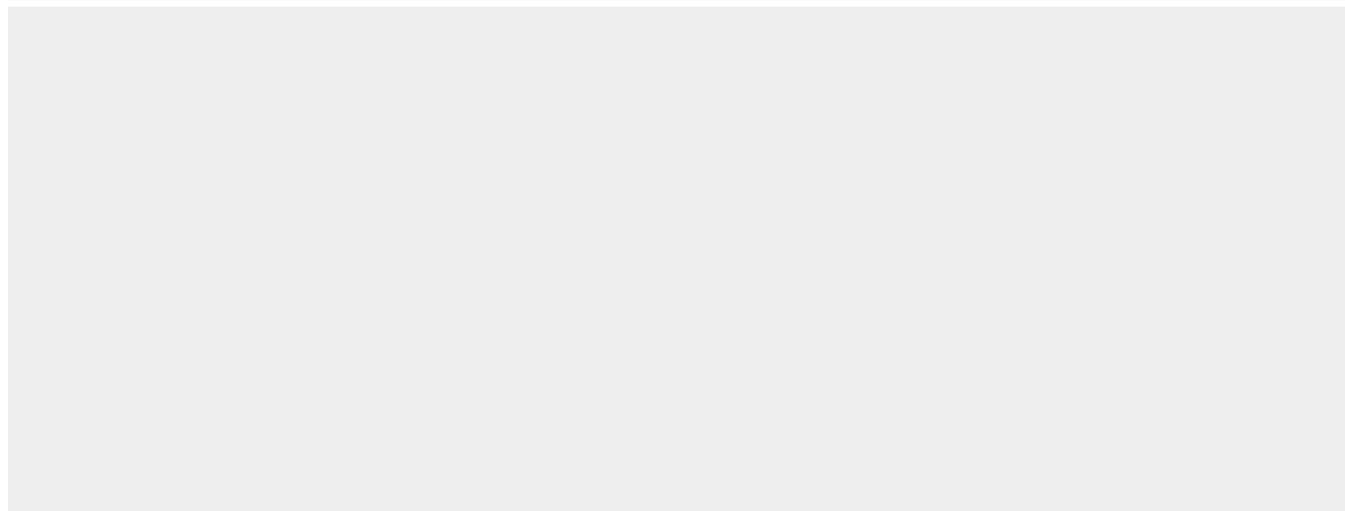
Tissue Location

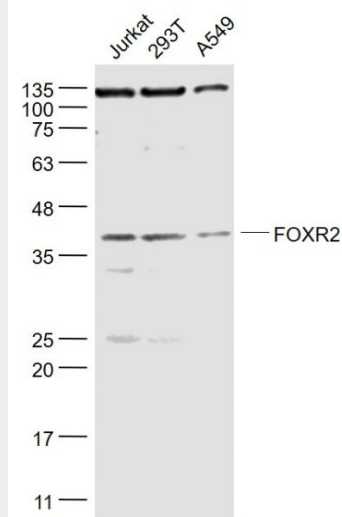
Expressed in breast cancer cell lines and primary cancer.

FOXR2 Polyclonal Antibody - Protocols

Provided below are standard protocols that you may find useful for product applications.

- [Western Blot](#)
- [Blocking Peptides](#)
- [Dot Blot](#)
- [Immunohistochemistry](#)
- [Immunofluorescence](#)
- [Immunoprecipitation](#)
- [Flow Cytometry](#)
- [Cell Culture](#)

FOXR2 Polyclonal Antibody - Images



Sample:

Jurkat(Human) Cell Lysate at 30 ug

293T(Human) Cell Lysate at 30 ug

A549(Human) Cell Lysate at 30 ug

Primary: Anti- FOXR2 (bs-16176R) at 1/1000 dilution

Secondary: IRDye800CW Goat Anti-Rabbit IgG at 1/20000 dilution

Predicted band size: 36 kD

Observed band size: 36 kD