

GLOD4 Polyclonal Antibody
Purified Rabbit Polyclonal Antibody (Pab)
Catalog # AP56189**Specification**

GLOD4 Polyclonal Antibody - Product Information

Application	IHC-P, IHC-F, IF, ICC, E
Primary Accession	O9HC38
Reactivity	Rat, Pig, Dog, Bovine
Host	Rabbit
Clonality	Polyclonal
Calculated MW	35 KDa
Physical State	Liquid
Immunogen	KLH conjugated synthetic peptide derived from human GLOD4
Epitope Specificity	101-200/313
Isotype	IgG
Purity	
affinity purified by Protein A	
Buffer	0.01M TBS (pH7.4) with 1% BSA, 0.02% Proclin300 and 50% Glycerol.
SUBCELLULAR LOCATION	Mitochondrion.
SIMILARITY	Belongs to the glyoxalase I family.
Important Note	This product as supplied is intended for research use only, not for use in human, therapeutic or diagnostic applications.

Background Descriptions

GLOD4 is a 313 amino acid protein belonging to the glyoxalase I family. GLOD4 interacts with NUDT9, a highly specific adenosine diphosphate ribose pyrophosphatase. Localized to mitochondrion, GLOD4 is expressed in heart, brain, liver, kidney, pancreas and placenta, but is not found in skeletal muscle or lung. Expression of GLOD4 is decreased in hepatocellular carcinoma samples in comparison to adjacent non-cancerous liver tissues from the same patients. Transfection of GLOD4 in hepatocellular carcinoma cells and overexpression has also been shown to inhibit cell growth. GLOD4 exists as three alternatively spliced isoforms and is encoded by a gene that maps to human chromosome 17p13.3.

GLOD4 Polyclonal Antibody - Additional Information

Gene ID 51031

Other Names

Glyoxalase domain-containing protein 4, GLOD4, C17orf25

Target/Specificity

Expressed in heart, brain, liver, kidney, pancreas and placenta. Not expressed in skeletal muscle and lung.

Dilution

IHC-P~~N/A<br \>IHC-F~~N/A<br \>IF~~1:50~200<br \>ICC~~N/A<br \>E~~N/A

Format

0.01M TBS(pH7.4), 0.09% (W/V) sodium azide and 50% Glyce

Storage

Store at -20 °C for one year. Avoid repeated freeze/thaw cycles. When reconstituted in sterile pH 7.4 0.01M PBS or diluent of antibody the antibody is stable for at least two weeks at 2-4 °C.

GLOD4 Polyclonal Antibody - Protein Information

Name GLOD4

Synonyms C17orf25

Cellular Location

Mitochondrion.

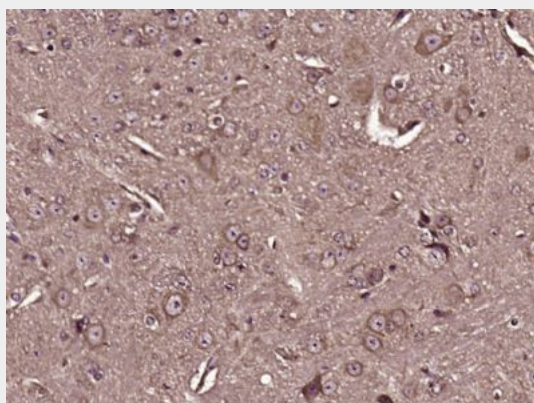
Tissue Location

Expressed in heart, brain, liver, kidney, pancreas and placenta. Not expressed in skeletal muscle and lung

GLOD4 Polyclonal Antibody - Protocols

Provided below are standard protocols that you may find useful for product applications.

- [Western Blot](#)
- [Blocking Peptides](#)
- [Dot Blot](#)
- [Immunohistochemistry](#)
- [Immunofluorescence](#)
- [Immunoprecipitation](#)
- [Flow Cytometry](#)
- [Cell Culture](#)

GLOD4 Polyclonal Antibody - Images

Paraformaldehyde-fixed, paraffin embedded (Mouse brain); Antigen retrieval by boiling in sodium citrate buffer (pH6.0) for 15min; Block endogenous peroxidase by 3% hydrogen peroxide for 20 minutes; Blocking buffer (normal goat serum) at 37°C for 30min; Antibody incubation with (GLOD4) Polyclonal Antibody, Unconjugated (bs-16250R) at 1:400 overnight at 4°C, followed by operating according to SP Kit(Rabbit) (sp-0023) instructions and DAB staining.