

**GPR153 Polyclonal Antibody**  
**Purified Rabbit Polyclonal Antibody (Pab)**  
**Catalog # AP56201**

**Specification**

**GPR153 Polyclonal Antibody - Product Information**

Application	WB, IHC-P, IHC-F, IF, ICC, E
Primary Accession	<a href="#">Q6NV75</a>
Reactivity	Rat, Pig, Dog, Bovine
Host	Rabbit
Clonality	Polyclonal
Calculated MW	65 KDa
Physical State	Liquid
Immunogen	KLH conjugated synthetic peptide derived from human GPR153
Epitope Specificity	101-200/609
Isotype	IgG
<b>Purity</b>	
affinity purified by Protein A	
Buffer	0.01M TBS (pH7.4) with 1% BSA, 0.02% Proclin300 and 50% Glycerol.
SUBCELLULAR LOCATION	Cell membrane.
SIMILARITY	Belongs to the G-protein coupled receptor 1 family.
Important Note	This product as supplied is intended for research use only, not for use in human, therapeutic or diagnostic applications.

**Background Descriptions**

GPR153 (G protein-coupled receptor 153), also known as PGR1, is a 609 amino acid multi-pass membrane protein that functions as an orphan receptor and belongs to the GPR1 family. The gene encoding GPR153 maps to human chromosome 1, which spans 260 million base pairs, contains over 3,000 genes and comprises nearly 8% of the human genome. Chromosome 1 houses a large number of disease-associated genes, including those that are involved in familial adenomatous polyposis, Stickler syndrome, Parkinson's disease, Gaucher disease, schizophrenia and Usher syndrome.

**GPR153 Polyclonal Antibody - Additional Information**

**Gene ID** 387509

**Other Names**

Probable G-protein coupled receptor 153, G-protein coupled receptor PGR1, GPR153, PGR1

**Dilution**

<span class = "dilution\_WB">WB~~1:1000</span><br \><span class = "dilution\_IHC-P">IHC-P~~N/A</span><br \><span class = "dilution\_IHC-F">IHC-F~~N/A</span><br \><span class = "dilution\_IF">IF~~1:50~200</span><br \><span class = "dilution\_ICC">ICC~~N/A</span><br \>

\><span class = "dilution\_E">E~~N/A</span>

**Format**

0.01M TBS(pH7.4), 0.09% (W/V) sodium azide and 50% Glyce

**Storage**

Store at -20 °C for one year. Avoid repeated freeze/thaw cycles. When reconstituted in sterile pH 7.4 0.01M PBS or diluent of antibody the antibody is stable for at least two weeks at 2-4 °C.

**GPR153 Polyclonal Antibody - Protein Information**

**Name** GPR153

**Synonyms** PGR1

**Function**

Orphan receptor.

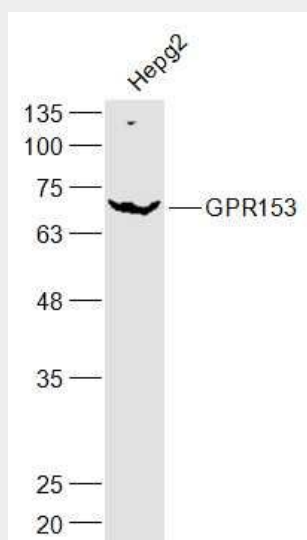
**Cellular Location**

Cell membrane; Multi-pass membrane protein.

**GPR153 Polyclonal Antibody - Protocols**

Provided below are standard protocols that you may find useful for product applications.

- [Western Blot](#)
- [Blocking Peptides](#)
- [Dot Blot](#)
- [Immunohistochemistry](#)
- [Immunofluorescence](#)
- [Immunoprecipitation](#)
- [Flow Cytometry](#)
- [Cell Culture](#)

**GPR153 Polyclonal Antibody - Images**

Sample:

Hepg2(Human) Cell Lysate at 30 ug

Primary: Anti-PKC iota (bs-16281R) at 1/300 dilution

Secondary: IRDye800CW Goat Anti-Rabbit IgG at 1/20000 dilution

Predicted band size: 65 kD

Observed band size: 65 kD