

GRHL1 Polyclonal Antibody
Purified Rabbit Polyclonal Antibody (Pab)
Catalog # AP56210**Specification****GRHL1 Polyclonal Antibody - Product Information**

Application	IHC-P
Primary Accession	O9NZI5
Reactivity	Rat, Pig, Dog, Bovine
Host	Rabbit
Clonality	Polyclonal
Calculated MW	70113

GRHL1 Polyclonal Antibody - Additional Information**Gene ID** 29841**Other Names**

Grainyhead-like protein 1 homolog {ECO:0000312|HGNC:HGNC:17923}, Mammalian grainyhead, NH32, Transcription factor CP2-like 2, Transcription factor LBP-32, GRHL1 (http://www.genenames.org/cgi-bin/gene_symbol_report?hgnc_id=17923)
target="_blank">HGNC:17923)

Format

0.01M TBS(pH7.4), 0.09% (W/V) sodium azide and 50% Glyce

Storage

Store at -20 °C for one year. Avoid repeated freeze/thaw cycles. When reconstituted in sterile pH 7.4 0.01M PBS or diluent of antibody the antibody is stable for at least two weeks at 2-4 °C.

GRHL1 Polyclonal Antibody - Protein Information**Name** GRHL1 ([HGNC:17923](#))**Function**

Transcription factor involved in epithelial development. Binds directly to the consensus DNA sequence 5'-AACCGGTT-3' (PubMed:<http://www.uniprot.org/citations/12175488> target="_blank">12175488, PubMed:<http://www.uniprot.org/citations/18288204> target="_blank">18288204, PubMed:<http://www.uniprot.org/citations/29309642> target="_blank">29309642). Important regulator of DSG1 in the context of hair anchorage and epidermal differentiation, participates in the maintenance of the skin barrier. There is no genetic interaction with GRHL3, nor functional cooperativity due to diverse target gene selectivity during epithelia development (By similarity). May play a role in regulating glucose homeostasis and insulin signaling.

Cellular Location

Nucleus

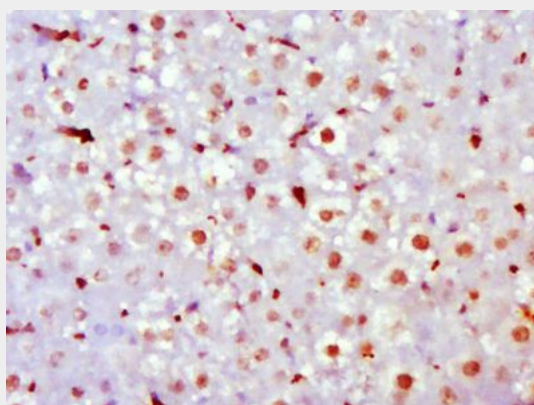
Tissue Location

Isoform 1 is highly expressed in brain, pancreas, tonsil, placenta and kidney. Isoform 2 is highly expressed in brain and liver. Expressed at very low levels in non-steroidogenic cells

GRHL1 Polyclonal Antibody - Protocols

Provided below are standard protocols that you may find useful for product applications.

- [Western Blot](#)
- [Blocking Peptides](#)
- [Dot Blot](#)
- [Immunohistochemistry](#)
- [Immunofluorescence](#)
- [Immunoprecipitation](#)
- [Flow Cytometry](#)
- [Cell Culture](#)

GRHL1 Polyclonal Antibody - Images

Paraformaldehyde-fixed, paraffin embedded (Rat liver); Antigen retrieval by boiling in sodium citrate buffer (pH6.0) for 15min; Block endogenous peroxidase by 3% hydrogen peroxide for 20 minutes; Blocking buffer (normal goat serum) at 37°C for 30min; Antibody incubation with (GRHL1) Polyclonal Antibody, Unconjugated (bs-16305R) at 1:500 overnight at 4°C, followed by a conjugated secondary (sp-0023) for 20 minutes and DAB staining.