

Granuphilin/SYTL4 Polyclonal Antibody
Purified Rabbit Polyclonal Antibody (Pab)
Catalog # AP56214**Specification**

Granuphilin/SYTL4 Polyclonal Antibody - Product Information

Application	IHC-P, IHC-F, IF, ICC, E
Primary Accession	Q96C24
Reactivity	Rat, Dog, Bovine
Host	Rabbit
Clonality	Polyclonal
Calculated MW	76 KDa
Physical State	Liquid
Immunogen	KLH conjugated synthetic peptide derived from human Granuphilin/SYTL4
Epitope Specificity	25-125/671
Isotype	IgG
Purity	
affinity purified by Protein A	
Buffer	0.01M TBS (pH7.4) with 1% BSA, 0.02% Proclin300 and 50% Glycerol.
SUBCELLULAR LOCATION	Membrane. Cell membrane. Cytoplasmic vesicle > secretory vesicle membrane. Detected close to the plasma membrane and on secretory granules. In pancreas, interacts with insulin-containing vesicles.
SIMILARITY	Contains 2 C2 domains. Contains 1 FYVE-type zinc finger. Contains 1 RabBD (Rab-binding) domain.
SUBUNIT	Part of a ternary complex containing STX1A and RAB27A. Can bind both dominant negative and dominant active mutants of RAB27A. Binds STXBP1, RAB3A, RAB8A and RAB27B. Interacts with MYO5A (By similarity).
Important Note	This product as supplied is intended for research use only, not for use in human, therapeutic or diagnostic applications.

Background Descriptions

This gene encodes a member of the synaptotagmin like protein family. Members of this family are characterized by an N-terminal Rab27 binding domain and C-terminal tandem C2 domains. The encoded protein binds specific small Rab GTPases and is involved in intracellular membrane trafficking. This protein binds Rab27 and may be involved in inhibiting dense core vesicle exocytosis. Alternate splicing results in multiple transcript variants that encode the same protein. [provided by RefSeq, Mar 2010]

Granuphilin/SYTL4 Polyclonal Antibody - Additional Information

Gene ID 94121

Other Names

Synaptotagmin-like protein 4, Exophilin-2, Granuphilin, SYTL4

Dilution

IHC-P~N/A
IHC-F~N/A
IF~1:50~200
ICC~N/A
E~N/A

Storage

Store at -20 °C for one year. Avoid repeated freeze/thaw cycles. When reconstituted in sterile pH 7.4 0.01M PBS or diluent of antibody the antibody is stable for at least two weeks at 2-4 °C.

Granuphilin/SYTL4 Polyclonal Antibody - Protein Information

Name SYTL4

Function

Modulates exocytosis of dense-core granules and secretion of hormones in the pancreas and the pituitary. Interacts with vesicles containing negatively charged phospholipids in a Ca(2+)-independent manner (By similarity).

Cellular Location

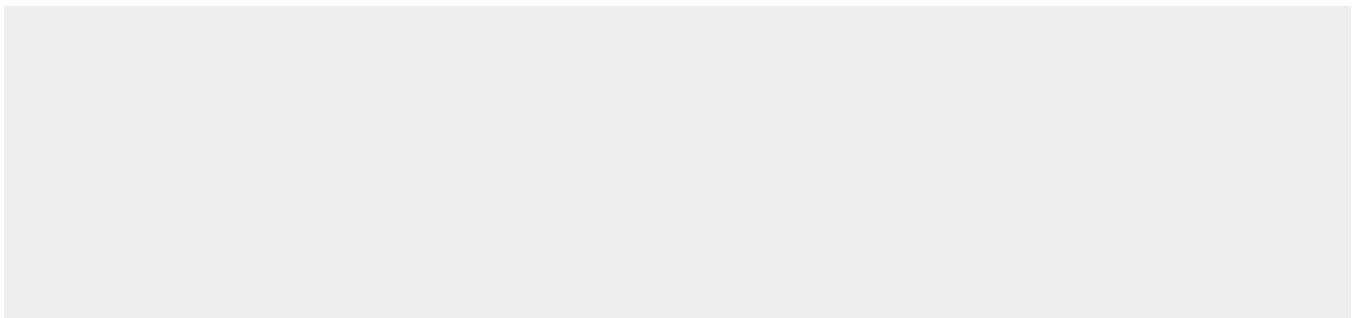
Membrane; Peripheral membrane protein. Cell membrane; Peripheral membrane protein. Cytoplasmic vesicle, secretory vesicle membrane; Peripheral membrane protein. Note=Detected close to the plasma membrane and on secretory granules. In pancreas, interacts with insulin-containing vesicles (By similarity)

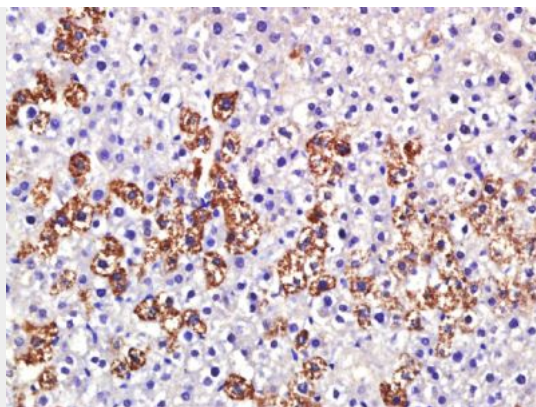
Granuphilin/SYTL4 Polyclonal Antibody - Protocols

Provided below are standard protocols that you may find useful for product applications.

- [Western Blot](#)
- [Blocking Peptides](#)
- [Dot Blot](#)
- [Immunohistochemistry](#)
- [Immunofluorescence](#)
- [Immunoprecipitation](#)
- [Flow Cytometry](#)
- [Cell Culture](#)

Granuphilin/SYTL4 Polyclonal Antibody - Images





Paraformaldehyde-fixed, paraffin embedded (Rat liver); Antigen retrieval by boiling in sodium citrate buffer (pH6.0) for 15min; Block endogenous peroxidase by 3% hydrogen peroxide for 20 minutes; Blocking buffer (normal goat serum) at 37°C for 30min; Antibody incubation with (Granuphilin) Polyclonal Antibody, Unconjugated (bs-16310R) at 1:400 overnight at 4°C, followed by a conjugated secondary (sp-0023) for 20 minutes and DAB staining.