

GTF2IRD2 Polyclonal Antibody
Purified Rabbit Polyclonal Antibody (Pab)
Catalog # AP56228**Specification**

GTF2IRD2 Polyclonal Antibody - Product Information

Application	IHC-P, IHC-F, IF, ICC, E
Primary Accession	Q86UP8
Reactivity	Rat, Pig, Dog, Bovine
Host	Rabbit
Clonality	Polyclonal
Calculated MW	107 KDa
Physical State	Liquid
Immunogen	KLH conjugated synthetic peptide derived from human GTF2IRD2
Epitope Specificity	1-100/949
Isotype	IgG
Purity	
affinity purified by Protein A	
Buffer	0.01M TBS (pH7.4) with 1% BSA, 0.02% Proclin300 and 50% Glycerol.
SUBCELLULAR LOCATION	Nuclear
SIMILARITY	Belongs to the TFII-I family. Contains 2 GTF2I-like repeats.
DISEASE	Note=GTF2IRD2 is located in the Williams-Beuren syndrome (WBS) critical region. WBS results from a hemizygous deletion of several genes on chromosome 7q11.23, thought to arise as a consequence of unequal crossing over between highly homologous low-copy repeat sequences flanking the deleted region.
Important Note	This product as supplied is intended for research use only, not for use in human, therapeutic or diagnostic applications.

Background Descriptions

This gene is one of several closely related genes on chromosome 7 encoding proteins containing helix-loop-helix motifs. These proteins may function as regulators of transcription. The encoded protein is unique in that its C-terminus is derived from CHARLIE8 transposable element sequence. This gene is located in a region of chromosome 7 that is deleted in Williams-Beuren syndrome, and loss of this locus may contribute to the cognitive phenotypes observed in this disease. Alternative splicing results in multiple transcript variants. [provided by RefSeq, Jul 2013]

GTF2IRD2 Polyclonal Antibody - Additional Information**Gene ID 84163**

Other Names

General transcription factor II-I repeat domain-containing protein 2A, GTF2I repeat domain-containing protein 2A, Transcription factor GTF2IRD2-alpha, GTF2IRD2, GTF2IRD2A

Target/Specificity

Ubiquitous.

Dilution

IHC-P~~N/A
IHC-F~~N/A
IF~~1:50~200
ICC~~N/A
E~~N/A

Storage

Store at -20 °C for one year. Avoid repeated freeze/thaw cycles. When reconstituted in sterile pH 7.4 0.01M PBS or diluent of antibody the antibody is stable for at least two weeks at 2-4 °C.

GTF2IRD2 Polyclonal Antibody - Protein Information

Name GTF2IRD2

Synonyms GTF2IRD2A

Cellular Location

Nucleus.

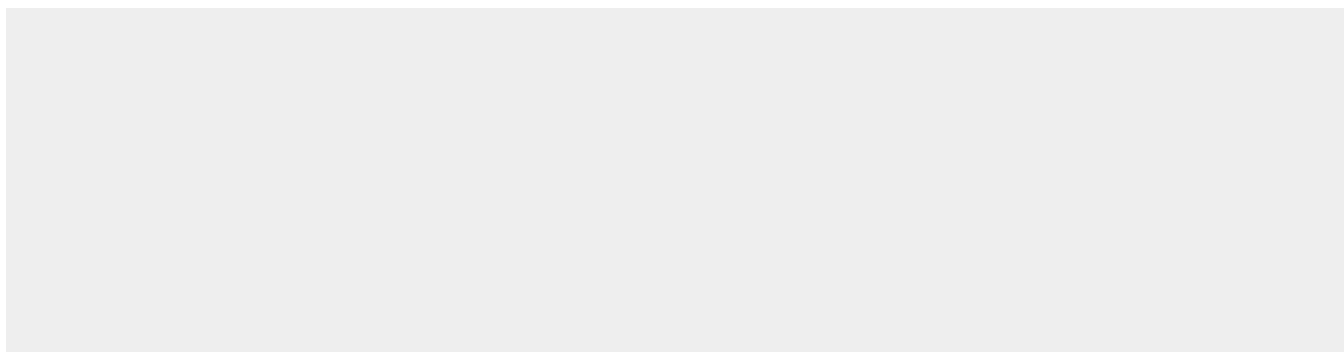
Tissue Location

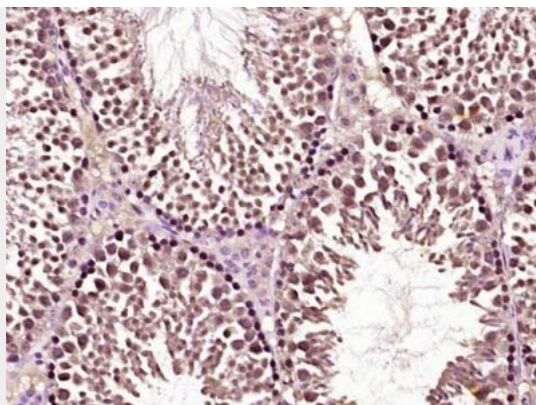
Ubiquitous..

GTF2IRD2 Polyclonal Antibody - Protocols

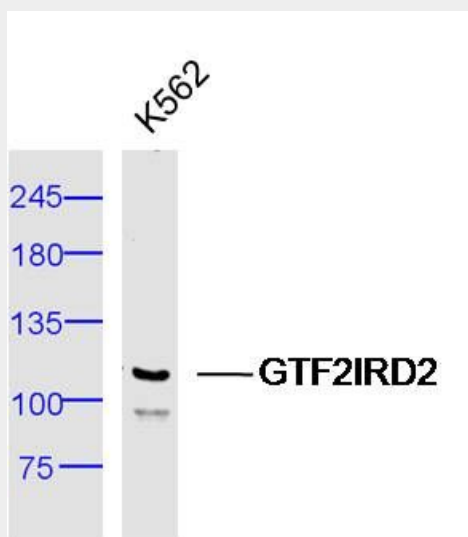
Provided below are standard protocols that you may find useful for product applications.

- [Western Blot](#)
- [Blocking Peptides](#)
- [Dot Blot](#)
- [Immunohistochemistry](#)
- [Immunofluorescence](#)
- [Immunoprecipitation](#)
- [Flow Cytometry](#)
- [Cell Culture](#)

GTF2IRD2 Polyclonal Antibody - Images



Paraformaldehyde-fixed, paraffin embedded (Mouse testis); Antigen retrieval by boiling in sodium citrate buffer (pH6.0) for 15min; Block endogenous peroxidase by 3% hydrogen peroxide for 20 minutes; Blocking buffer (normal goat serum) at 37°C for 30min; Antibody incubation with (GTF2IRD2) Polyclonal Antibody, Unconjugated (bs-16355R) at 1:400 overnight at 4°C, followed by operating according to SP Kit(Rabbit) (sp-0023) instructions and DAB staining.



Sample: K562 Cell (Human) Lysate at 40 ug
Primary: Anti-GTF2IRD2 (bs-16355R) at 1/300 dilution
Secondary: IRDye800CW Goat Anti-Rabbit IgG at 1/20000 dilution
Predicted band size: 107 kD
Observed band size: 107 kD