

**ZYG11BL Polyclonal Antibody**  
**Purified Rabbit Polyclonal Antibody (Pab)**  
**Catalog # AP56239**

**Specification**

**ZYG11BL Polyclonal Antibody - Product Information**

Application	WB, IHC-P, IHC-F, IF, ICC, E
Primary Accession	<a href="#">Q7Z7L7</a>
Reactivity	Rat, Pig, Dog, Bovine
Host	Rabbit
Clonality	Polyclonal
Calculated MW	88 KDa
Physical State	Liquid
Immunogen	KLH conjugated synthetic peptide derived from human ZYG11BL
Epitope Specificity	21-120/766
Isotype	IgG
<b>Purity</b>	
affinity purified by Protein A	
Buffer	0.01M TBS (pH7.4) with 1% BSA, 0.02% Proclin300 and 50% Glycerol.
SIMILARITY	Belongs to the zyg-11 family. Contains 5 ARM repeats. Contains 3 LRR (leucine-rich) repeats.
Important Note	This product as supplied is intended for research use only, not for use in human, therapeutic or diagnostic applications.

**Background Descriptions**

This gene encodes a subunit of an E3 ubiquitin ligase complex that may be involved in meiosis. The encoded protein contains three leucine-rich repeat motifs. [provided by RefSeq, Nov 2012]

**ZYG11BL Polyclonal Antibody - Additional Information**

**Gene ID** 10444

**Other Names**

Protein zer-1 homolog, Hzyg, Zyg-11 homolog B-like protein, Zyg11b-like protein, ZER1 ([http://www.genenames.org/cgi-bin/gene\\_symbol\\_report?hgnc\\_id=30960](http://www.genenames.org/cgi-bin/gene_symbol_report?hgnc_id=30960))  
HGNC:30960

**Target/Specificity**

Expressed in testis, spermatocytes and spermatids (at protein level). Expressed in spermatocytes, spermatids, prostate, skeletal muscle, ovary, small intestine, heart, brain and pancreas.

**Dilution**

WB~~1:1000  
IHC-P~~N/A  
IHC-F~~N/A

=["dilution\\_IF">IF~~1:50~200</span><br \><span class = "dilution\\_ICC">ICC~~N/A</span><br \><span class = "dilution\\_E">E~~N/A</span>](#)

**Format**

0.01M TBS(pH7.4), 0.09% (W/V) sodium azide and 50% Glyce

**Storage**

Store at -20 °C for one year. Avoid repeated freeze/thaw cycles. When reconstituted in sterile pH 7.4 0.01M PBS or diluent of antibody the antibody is stable for at least two weeks at 2-4 °C.

**ZYG11BL Polyclonal Antibody - Protein Information**

**Name** ZER1 ([HGNC:30960](#))

**Function**

Serves as substrate adapter subunit in the E3 ubiquitin ligase complex ZYG11B-CUL2-Elongin BC (PubMed:<[17304241](http://www.uniprot.org/citations/17304241)</a>, PubMed:<[31273098](http://www.uniprot.org/citations/31273098)</a>). Acts to target substrates bearing N-terminal degrons for proteasomal degradation with the first four residues of substrates being the key recognition elements (PubMed:<[33093214](http://www.uniprot.org/citations/33093214)</a>, PubMed:<[34214466](http://www.uniprot.org/citations/34214466)</a>, PubMed:<[36496439](http://www.uniprot.org/citations/36496439)</a>). Involved in the clearance of proteolytic fragments generated by caspase cleavage during apoptosis since N-terminal glycine degrons are strongly enriched at caspase cleavage sites. Also important in the quality control of protein N-myristoylation in which N-terminal glycine degrons are conditionally exposed after a failure of N- myristoylation (PubMed:<[31273098](http://www.uniprot.org/citations/31273098)</a>).

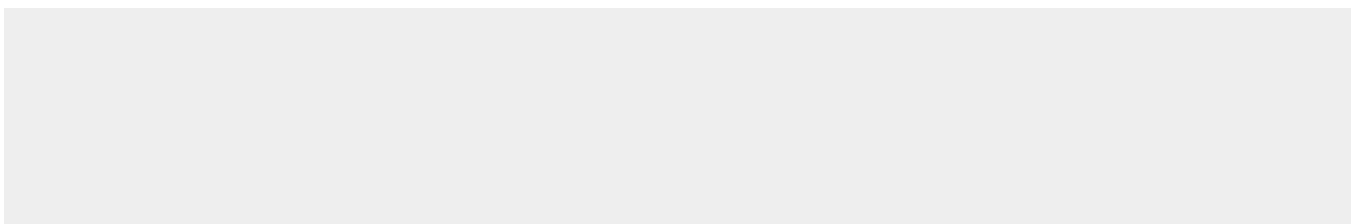
**Tissue Location**

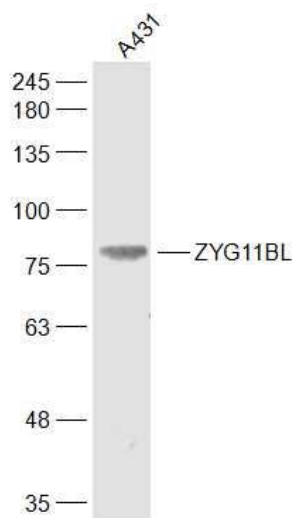
Expressed in testis, spermatocytes and spermatids (at protein level). Expressed in spermatocytes, spermatids, prostate, skeletal muscle, ovary, small intestine, heart, brain and pancreas

**ZYG11BL Polyclonal Antibody - Protocols**

Provided below are standard protocols that you may find useful for product applications.

- [Western Blot](#)
- [Blocking Peptides](#)
- [Dot Blot](#)
- [Immunohistochemistry](#)
- [Immunofluorescence](#)
- [Immunoprecipitation](#)
- [Flow Cytometry](#)
- [Cell Culture](#)

**ZYG11BL Polyclonal Antibody - Images**



**Sample:**

A431(Human) Cell Lysate at 30 ug

Primary: Anti-ZYG11BL (bs-16389R) at 1/300 dilution

Secondary: IRDye800CW Goat Anti-Rabbit IgG at 1/20000 dilution

Predicted band size: 88 kD

Observed band size: 88 kD