

ZSWIM6 Polyclonal Antibody
Purified Rabbit Polyclonal Antibody (Pab)
Catalog # AP56244**Specification**

ZSWIM6 Polyclonal Antibody - Product Information

Application	IHC-P
Primary Accession	O9HCJ5
Reactivity	Rat, Pig, Dog, Bovine
Host	Rabbit
Clonality	Polyclonal
Calculated MW	133470

ZSWIM6 Polyclonal Antibody - Additional Information**Gene ID** 57688**Other Names**

Zinc finger SWIM domain-containing protein 6, ZSWIM6 {ECO:0000303|PubMed:29198722, ECO:0000312|HGNC:HGNC:29316}

Format

0.01M TBS(pH7.4), 0.09% (W/V) sodium azide and 50% Glyce

Storage

Store at -20 °C for one year. Avoid repeated freeze/thaw cycles. When reconstituted in sterile pH 7.4 0.01M PBS or diluent of antibody the antibody is stable for at least two weeks at 2-4 °C.

ZSWIM6 Polyclonal Antibody - Protein Information**Name** ZSWIM6 {ECO:0000303|PubMed:29198722, ECO:0000312|HGNC:HGNC:29316}**Function**

involved in nervous system development, important for striatal morphology and motor regulation.

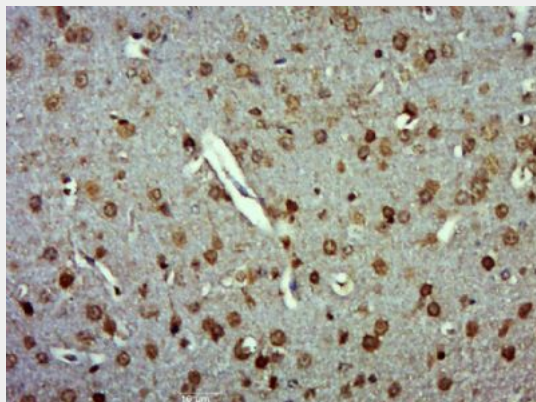
ZSWIM6 Polyclonal Antibody - Protocols

Provided below are standard protocols that you may find useful for product applications.

- [Western Blot](#)
- [Blocking Peptides](#)
- [Dot Blot](#)
- [Immunohistochemistry](#)
- [Immunofluorescence](#)
- [Immunoprecipitation](#)
- [Flow Cytometry](#)

- [Cell Culture](#)

ZSWIM6 Polyclonal Antibody - Images



Paraformaldehyde-fixed, paraffin embedded (Mouse brain); Antigen retrieval by boiling in sodium citrate buffer (pH6.0) for 15min; Block endogenous peroxidase by 3% hydrogen peroxide for 20 minutes; Blocking buffer (normal goat serum) at 37°C for 30min; Antibody incubation with (ZSWIM6) Polyclonal Antibody, Unconjugated (bs-16398R) at 1:500 overnight at 4°C, followed by a conjugated secondary (sp-0023) for 20 minutes and DAB staining.