

**ZNF776 Polyclonal Antibody**  
**Purified Rabbit Polyclonal Antibody (Pab)**  
**Catalog # AP56281****Specification****ZNF776 Polyclonal Antibody - Product Information**

Application	WB, IHC-P, IHC-F, IF, ICC, E
Primary Accession	<a href="#">Q68DI1</a>
Host	Rabbit
Clonality	Polyclonal
Calculated MW	60 KDa
Physical State	Liquid
Immunogen	KLH conjugated synthetic peptide derived from human ZNF776
Epitope Specificity	121-220/518
Isotype	IgG
<b>Purity</b>	
affinity purified by Protein A	
Buffer	0.01M TBS (pH7.4) with 1% BSA, 0.02% Proclin300 and 50% Glycerol.
SUBCELLULAR LOCATION	Nucleus.
SIMILARITY	Belongs to the krueppel C2H2-type zinc-finger protein family. Contains 11 C2H2-type zinc fingers. Contains 1 KRAB domain.
Important Note	This product as supplied is intended for research use only, not for use in human, therapeutic or diagnostic applications.

**ZNF776 Polyclonal Antibody - Additional Information****Gene ID** 284309**Other Names**

Zinc finger protein 776, ZNF776

**Dilution**

<span class = "dilution\_WB">WB~~1:1000</span><br \><span class = "dilution\_IHC-P">IHC-P~~N/A</span><br \><span class = "dilution\_IHC-F">IHC-F~~N/A</span><br \><span class = "dilution\_IF">IF~~1:50~200</span><br \><span class = "dilution\_ICC">ICC~~N/A</span><br \><span class = "dilution\_E">E~~N/A</span>

**Format**

0.01M TBS(pH7.4), 0.09% (W/V) sodium azide and 50% Glyce

**Storage**

Store at -20 °C for one year. Avoid repeated freeze/thaw cycles. When reconstituted in sterile pH 7.4 0.01M PBS or diluent of antibody the antibody is stable for at least two weeks at 2-4 °C.

## ZNF776 Polyclonal Antibody - Protein Information

**Name** ZNF776

**Function**

May be involved in transcriptional regulation.

**Cellular Location**

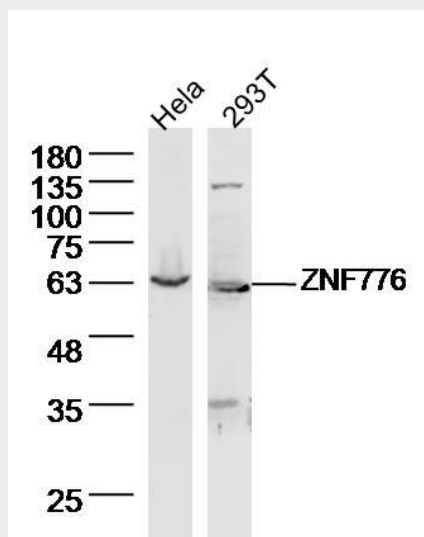
Nucleus.

## ZNF776 Polyclonal Antibody - Protocols

Provided below are standard protocols that you may find useful for product applications.

- [Western Blot](#)
- [Blocking Peptides](#)
- [Dot Blot](#)
- [Immunohistochemistry](#)
- [Immunofluorescence](#)
- [Immunoprecipitation](#)
- [Flow Cytometry](#)
- [Cell Culture](#)

## ZNF776 Polyclonal Antibody - Images



**Sample:**

HeLa Cell Lysate at 40 ug

293T Cell Lysate at 40 ug

Primary: Anti-ZNF776 (bs-16480R) at 1/300 dilution

Secondary: IRDye800CW Goat Anti-Rabbit IgG at 1/20000 dilution

Predicted band size: 60 kD

Observed band size: 60 kD