

TRAF5 Polyclonal Antibody
Purified Rabbit Polyclonal Antibody (Pab)
Catalog # AP56319**Specification****TRAF5 Polyclonal Antibody - Product Information**

Application	WB, IHC-P, IHC-F, IF, ICC, E
Primary Accession	O00463
Reactivity	Rat, Pig
Host	Rabbit
Clonality	Polyclonal
Calculated MW	64 KDa
Physical State	Liquid
Immunogen	KLH conjugated synthetic peptide derived from human TRAF5
Epitope Specificity	101-200/557
Isotype	IgG
Purity	
affinity purified by Protein A	
Buffer	0.01M TBS (pH7.4) with 1% BSA, 0.02% Proclin300 and 50% Glycerol.
SUBCELLULAR LOCATION	Cytoplasm.
SIMILARITY	Belongs to the TNF receptor-associated factor family. A subfamily. Contains 1 MATH domain. Contains 1 RING-type zinc finger. Contains 2 TRAF-type zinc fingers.
Important Note	This product as supplied is intended for research use only, not for use in human, therapeutic or diagnostic applications.

Background Descriptions

The scaffold protein encoded by this gene is a member of the tumor necrosis factor receptor-associated factor (TRAF) protein family and contains a meprin and TRAF homology (MATH) domain, a RING-type zinc finger, and two TRAF-type zinc fingers. TRAF proteins are associated with, and mediate signal transduction from members of the TNF receptor superfamily. This protein is one of the components of a multiple protein complex which binds to tumor necrosis factor (TNF) receptor cytoplasmic domains and mediates TNF-induced activation. Alternate transcriptional splice variants have been characterized. [provided by RefSeq, Jul 2008]

TRAF5 Polyclonal Antibody - Additional Information**Gene ID** 7188**Other Names**

TNF receptor-associated factor 5, RING finger protein 84, TRAF5, RNF84

Target/Specificity

Expressed in spleen, thymus, prostate, testis, ovary, small intestine, colon, and peripheral blood.

Dilution

WB~~1:1000<br \>IHC-P~~N/A<br \>IHC-F~~N/A<br \>IF~~1:50~200<br \>ICC~~N/A<br \>E~~N/A

Format

0.01M TBS(pH7.4), 0.09% (W/V) sodium azide and 50% Glyce

Storage

Store at -20 °C for one year. Avoid repeated freeze/thaw cycles. When reconstituted in sterile pH 7.4 0.01M PBS or diluent of antibody the antibody is stable for at least two weeks at 2-4 °C.

TRAF5 Polyclonal Antibody - Protein Information

Name TRAF5

Synonyms RNF84

Function

Adapter protein and signal transducer that links members of the tumor necrosis factor receptor family to different signaling pathways by association with the receptor cytoplasmic domain and kinases. Mediates activation of NF-kappa-B and probably JNK. Seems to be involved in apoptosis. Plays a role in mediating activation of NF- kappa-B by EIF2AK2/PKR.

Cellular Location

Cytoplasm. Cytoplasm, cytosol

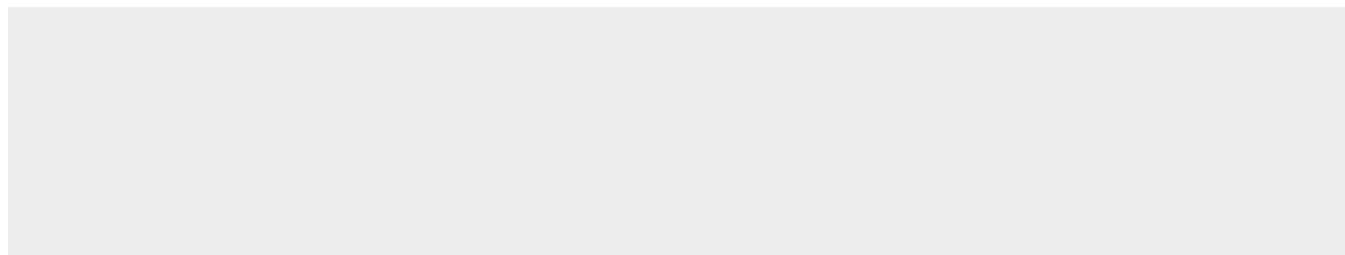
Tissue Location

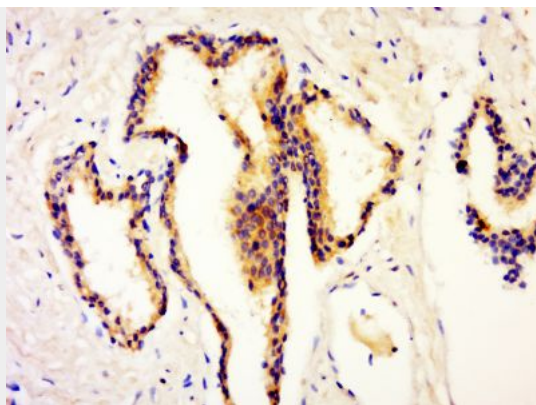
Expressed in spleen, thymus, prostate, testis, ovary, small intestine, colon, and peripheral blood

TRAF5 Polyclonal Antibody - Protocols

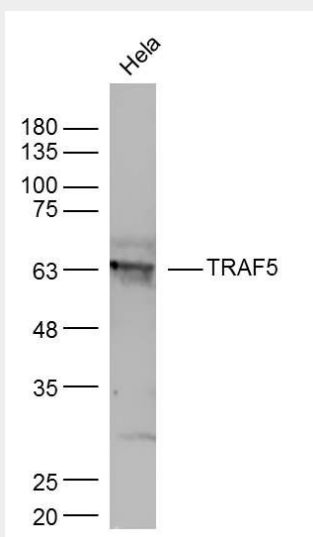
Provided below are standard protocols that you may find useful for product applications.

- [Western Blot](#)
- [Blocking Peptides](#)
- [Dot Blot](#)
- [Immunohistochemistry](#)
- [Immunofluorescence](#)
- [Immunoprecipitation](#)
- [Flow Cytometry](#)
- [Cell Culture](#)

TRAF5 Polyclonal Antibody - Images



Paraformaldehyde-fixed, paraffin embedded (rat prostate); Antigen retrieval by boiling in sodium citrate buffer (pH6.0) for 15min; Block endogenous peroxidase by 3% hydrogen peroxide for 20 minutes; Blocking buffer (normal goat serum) at 37°C for 30min; Antibody incubation with (TRAF5) Polyclonal Antibody, Unconjugated (bs-16563R) at 1:5000 overnight at 4°C, followed by a conjugated secondary (sp-0023) for 20 minutes and DAB staining.



Sample:

HeLa Cell (Human) Lysate at 30 ug

Primary: Anti- TRAF5 (bs-16563R) at 1/300 dilution

Secondary: IRDye800CW Goat Anti-Rabbit IgG at 1/20000 dilution

Predicted band size: 64 kD

Observed band size: 64 kD