

**RGS22 Antibody (Center)**  
**Affinity Purified Rabbit Polyclonal Antibody (Pab)**  
**Catalog # AP5631c****Specification**

---

**RGS22 Antibody (Center) - Product Information**

Application	WB, IHC-P, FC,E
Primary Accession	<a href="#">Q8NE09</a>
Other Accession	<a href="#">NP_056483.3</a>
Reactivity	Human, Mouse
Host	Rabbit
Clonality	Polyclonal
Isotype	Rabbit IgG
Antigen Region	388-417

**RGS22 Antibody (Center) - Additional Information****Gene ID** 26166**Other Names**

Regulator of G-protein signaling 22, RGS22, RGS22

**Target/Specificity**

This RGS22 antibody is generated from rabbits immunized with a KLH conjugated synthetic peptide between 388-417 amino acids from the Central region of human RGS22.

**Dilution**

WB~~1:1000  
IHC-P~~1:50~100  
FC~~1:10~50

**Format**

Purified polyclonal antibody supplied in PBS with 0.09% (W/V) sodium azide. This antibody is purified through a protein A column, followed by peptide affinity purification.

**Storage**

Maintain refrigerated at 2-8°C for up to 2 weeks. For long term storage store at -20°C in small aliquots to prevent freeze-thaw cycles.

**Precautions**

RGS22 Antibody (Center) is for research use only and not for use in diagnostic or therapeutic procedures.

**RGS22 Antibody (Center) - Protein Information****Name** RGS22**Function** Inhibits signal transduction by increasing the GTPase activity of G protein alpha subunits

thereby driving them into their inactive GDP-bound form.

#### Cellular Location

Cytoplasm. Nucleus. Note=Expressed in the cytoplasm of spermatogonia and spermatocytes. In spermatids, also expressed in the nucleus

#### Tissue Location

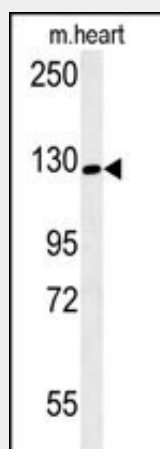
Testis-specific. Expressed in Leydig cells and spermatogenic cells from the spermatogonia to spermatid stages (at protein level).

### RGS22 Antibody (Center) - Protocols

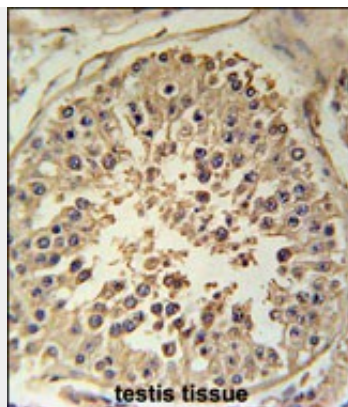
Provided below are standard protocols that you may find useful for product applications.

- [Western Blot](#)
- [Blocking Peptides](#)
- [Dot Blot](#)
- [Immunohistochemistry](#)
- [Immunofluorescence](#)
- [Immunoprecipitation](#)
- [Flow Cytometry](#)
- [Cell Culture](#)

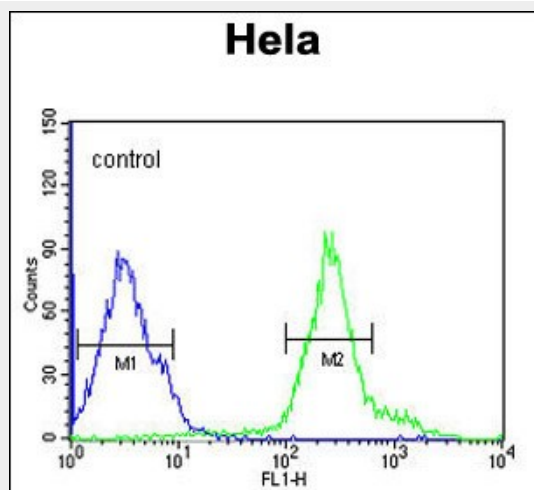
### RGS22 Antibody (Center) - Images



RGS22 Antibody (Center) (Cat. #AP5631c) western blot analysis in mouse heart tissue lysates (15ug/lane). This demonstrates the RGS22 antibody detected the RGS22 protein (arrow).



RGS22 Antibody (Center) (Cat. #AP5631c) immunohistochemistry analysis in formalin fixed and paraffin embedded human testis tissue followed by peroxidase conjugation of the secondary antibody and DAB staining. This data demonstrates the use of the RGS22 Antibody (Center) for immunohistochemistry. Clinical relevance has not been evaluated.



RGS22 Antibody (Center) (Cat. #AP5631c) flow cytometric analysis of HeLa cells (right histogram) compared to a negative control cell (left histogram). FITC-conjugated goat-anti-rabbit secondary antibodies were used for the analysis.

### **RGS22 Antibody (Center) - Background**

RGS22 inhibits signal transduction by increasing the GTPase activity of G protein alpha subunits thereby driving them into their inactive GDP-bound form (By similarity).

### **RGS22 Antibody (Center) - References**

Hu, Y., et al. Biol. Reprod. 79(6):1021-1029(2008)