

EID2 Antibody (C-term)
Affinity Purified Rabbit Polyclonal Antibody (Pab)
Catalog # AP5633b**Specification**

EID2 Antibody (C-term) - Product Information

Application	WB,E
Primary Accession	Q8N6I1
Other Accession	NP_694964.3
Reactivity	Human, Mouse
Host	Rabbit
Clonality	Polyclonal
Isotype	Rabbit IgG
Calculated MW	25190
Antigen Region	177-208

EID2 Antibody (C-term) - Additional Information**Gene ID** 163126**Other Names**

EP300-interacting inhibitor of differentiation 2, EID-2, CREBBP/EP300 inhibitor 2, EID-1-like inhibitor of differentiation 2, EID2 {ECO:0000312|EMBL:AAH301373}

Target/Specificity

This EID2 antibody is generated from rabbits immunized with a KLH conjugated synthetic peptide between 177-208 amino acids from the C-terminal region of human EID2.

Dilution

WB~~1:1000

E~~Use at an assay dependent concentration.

Format

Purified polyclonal antibody supplied in PBS with 0.09% (W/V) sodium azide. This antibody is purified through a protein A column, followed by peptide affinity purification.

Storage

Maintain refrigerated at 2-8°C for up to 2 weeks. For long term storage store at -20°C in small aliquots to prevent freeze-thaw cycles.

Precautions

EID2 Antibody (C-term) is for research use only and not for use in diagnostic or therapeutic procedures.

EID2 Antibody (C-term) - Protein Information**Name** EID2 {ECO:0000312|EMBL:AAH30137.3}

Function Interacts with EP300 and acts as a repressor of MYOD- dependent transcription and muscle differentiation. Inhibits EP300 histone acetyltransferase activity. Acts as a repressor of TGFB/SMAD transcriptional responses. May act as a repressor of the TGFB/SMAD3- dependent signaling by selectively blocking formation of TGFB-induced SMAD3-SMAD4 complex.

Cellular Location

Nucleus.

Tissue Location

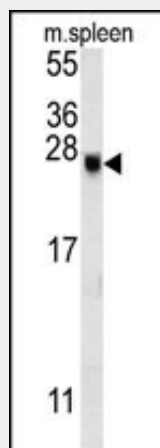
Most abundantly expressed in placenta. Highly expressed in liver, brain, heart, skeletal muscle, and kidney

EID2 Antibody (C-term) - Protocols

Provided below are standard protocols that you may find useful for product applications.

- [Western Blot](#)
- [Blocking Peptides](#)
- [Dot Blot](#)
- [Immunohistochemistry](#)
- [Immunofluorescence](#)
- [Immunoprecipitation](#)
- [Flow Cytometry](#)
- [Cell Culture](#)

EID2 Antibody (C-term) - Images



EID2 Antibody (C-term) (Cat. #AP5633b) western blot analysis in mouse spleen tissue lysates (15ug/lane). This demonstrates the EID2 antibody detected EID2 protein (arrow).

EID2 Antibody (C-term) - Background

EID2 interacts with EP300 and acts as a repressor of MYOD-dependent transcription and muscle differentiation. Inhibits EP300 histone acetyltransferase activity. Acts as a repressor of TGFB/SMAD transcriptional responses. It may act as a repressor of the TGFB/SMAD3-dependent signaling by selectively blocking formation of TGFB-induced SMAD3-SMAD4 complex.

EID2 Antibody (C-term) - References

Lee, H.J., et al. J. Biol. Chem. 279(4):2666-2672(2004)

Ji, A., et al. Gene 318, 35-43 (2003) :