

TRIM50 Antibody (C-term)
Affinity Purified Rabbit Polyclonal Antibody (Pab)
Catalog # AP5637b**Specification**

TRIM50 Antibody (C-term) - Product Information

Application	FC, IHC-P, WB,E
Primary Accession	Q86XT4
Other Accession	NP_835226.1
Reactivity	Human
Host	Rabbit
Clonality	Polyclonal
Isotype	Rabbit IgG
Calculated MW	54728
Antigen Region	354-383

TRIM50 Antibody (C-term) - Additional Information**Gene ID** 135892**Other Names**

E3 ubiquitin-protein ligase TRIM50, 632-, Tripartite motif-containing protein 50, TRIM50, TRIM50A

Target/Specificity

This TRIM50 antibody is generated from rabbits immunized with a KLH conjugated synthetic peptide between 354-383 amino acids from the C-terminal region of human TRIM50.

Dilution

FC~~1:10~50

IHC-P~~1:50~100

WB~~1:1000

E~~Use at an assay dependent concentration.

Format

Purified polyclonal antibody supplied in PBS with 0.09% (W/V) sodium azide. This antibody is purified through a protein A column, followed by peptide affinity purification.

Storage

Maintain refrigerated at 2-8°C for up to 2 weeks. For long term storage store at -20°C in small aliquots to prevent freeze-thaw cycles.

Precautions

TRIM50 Antibody (C-term) is for research use only and not for use in diagnostic or therapeutic procedures.

TRIM50 Antibody (C-term) - Protein Information**Name** TRIM50 ([HGNC:19017](#))

Synonyms TRIM50A

Function E3 ubiquitin-protein ligase that ubiquitinates Beclin-1/BECN1 in a 'Lys-63'-dependent manner enhancing its binding to ULK1 (PubMed:[29604308](#)). In turn, promotes starvation-induced autophagy activation. Also interacts with p62/SQSTM1 protein and thereby induces the formation and the autophagy clearance of aggresome-associated polyubiquitinated proteins through HDAC6 interaction (PubMed:[22792322](#)). Also promotes NLRP3 inflammasome activation by directly inducing NLRP3 oligomerization independent of its E3 ligase function (By similarity).

Cellular Location

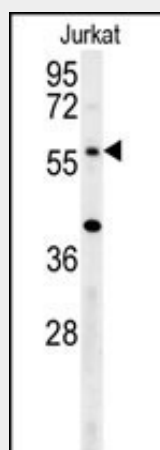
Cytoplasm Note=Localizes mainly into discrete cytoplasmic punctuate structures heterogeneous in size and shape containing polyubiquitinated proteins

TRIM50 Antibody (C-term) - Protocols

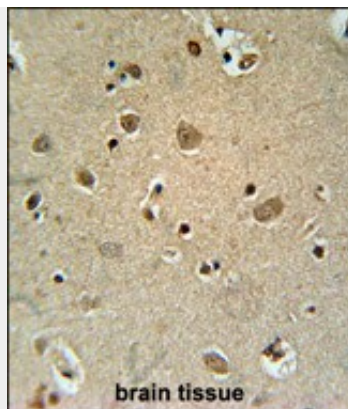
Provided below are standard protocols that you may find useful for product applications.

- [Western Blot](#)
- [Blocking Peptides](#)
- [Dot Blot](#)
- [Immunohistochemistry](#)
- [Immunofluorescence](#)
- [Immunoprecipitation](#)
- [Flow Cytometry](#)
- [Cell Culture](#)

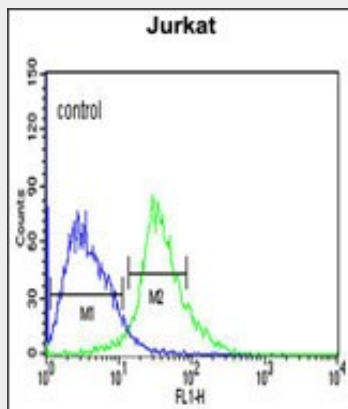
TRIM50 Antibody (C-term) - Images



TRIM50 Antibody (C-term) (Cat. #AP5637b) western blot analysis in Jurkat cell line lysates (15ug/lane). This demonstrates the TRIM50 antibody detected the TRIM50 protein (arrow).



TRIM50 Antibody (C-term) (Cat. #AP5637b) immunohistochemistry analysis in formalin fixed and paraffin embedded human brain tissue followed by peroxidase conjugation of the secondary antibody and DAB staining. This data demonstrates the use of the TRIM50 Antibody (C-term) for immunohistochemistry. Clinical relevance has not been evaluated.



TRIM50 Antibody (C-term) (Cat. #AP5637b) flow cytometric analysis of Jurkat cells (right histogram) compared to a negative control cell (left histogram). FITC-conjugated goat-anti-rabbit secondary antibodies were used for the analysis.

TRIM50 Antibody (C-term) - Background

TRIM50 belongs to the TRIM/RBCC family. It contains 1 B box-type zinc finger, 1 B30.2/SPRY domain and 1 RING-type zinc finger. TRIM50 is an E3 ubiquitin-protein ligase.

TRIM50 Antibody (C-term) - References

Micale, L., et al. Eur. J. Hum. Genet. 16(9):1038-1049(2008)