

KLC3 Polyclonal Antibody
Purified Rabbit Polyclonal Antibody (Pab)
Catalog # AP56386**Specification**

KLC3 Polyclonal Antibody - Product Information

Application	IHC-P
Primary Accession	Q6P597
Reactivity	Rat, Bovine
Host	Rabbit
Clonality	Polyclonal
Calculated MW	55364

KLC3 Polyclonal Antibody - Additional Information**Gene ID** 147700**Other Names**

Kinesin light chain 3, KLC2-like, kinesin light chain 2, KLC3, KLC2, KLC2L

Format

0.01M TBS(pH7.4), 0.09% (W/V) sodium azide and 50% Glyce

Storage

Store at -20 °C for one year. Avoid repeated freeze/thaw cycles. When reconstituted in sterile pH 7.4 0.01M PBS or diluent of antibody the antibody is stable for at least two weeks at 2-4 °C.

KLC3 Polyclonal Antibody - Protein Information**Name** KLC3**Synonyms** KLC2, KLC2L**Function**

Kinesin is a microtubule-associated force-producing protein that may play a role in organelle transport. Plays a role during spermiogenesis in the development of the sperm tail midpiece and in the normal function of spermatozoa (By similarity). May play a role in the formation of the mitochondrial sheath formation in the developing spermatid midpiece (By similarity).

Cellular Location

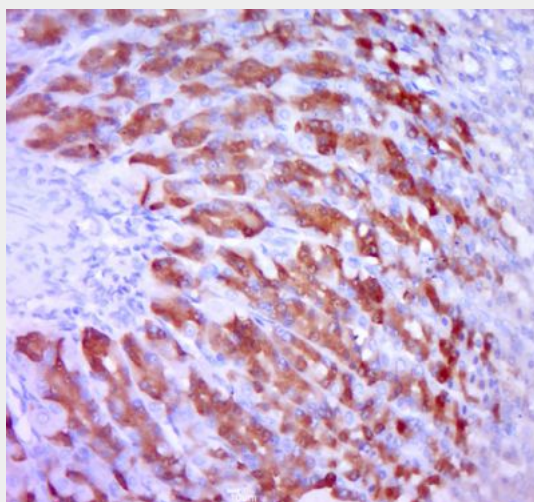
Cytoplasm, cytoskeleton {ECO:0000250|UniProtKB:Q68G30, ECO:0000250|UniProtKB:Q91W40}
Mitochondrion {ECO:0000250|UniProtKB:Q91W40}. Note=In elongating spermatid tail midpiece, localized in outer dense fibers (ODFs) and associates with mitochondria. Also localizes to the manchette in elongating spermatids. {ECO:0000250|UniProtKB:Q68G30, ECO:0000250|UniProtKB:Q91W40}

KLC3 Polyclonal Antibody - Protocols

Provided below are standard protocols that you may find useful for product applications.

- [Western Blot](#)
- [Blocking Peptides](#)
- [Dot Blot](#)
- [Immunohistochemistry](#)
- [Immunofluorescence](#)
- [Immunoprecipitation](#)
- [Flow Cytometry](#)
- [Cell Culture](#)

KLC3 Polyclonal Antibody - Images



Paraformaldehyde-fixed, paraffin embedded (rat stomach tissue); Antigen retrieval by boiling in sodium citrate buffer (pH6.0) for 15min; Block endogenous peroxidase by 3% hydrogen peroxide for 20 minutes; Blocking buffer (normal goat serum) at 37°C for 30min; Antibody incubation with (KLC3) Polyclonal Antibody, Unconjugated (bs-16751R) at 1:400 overnight at 4°C, followed by a conjugated secondary (sp-0023) for 20 minutes and DAB staining.