

KLHDC7B Polyclonal Antibody

Purified Rabbit Polyclonal Antibody (Pab)

Catalog # AP56392

Specification

KLHDC7B Polyclonal Antibody - Product Information

Application	WB, IHC-P, IHC-F, IF, ICC, E
Primary Accession	O96G42
Reactivity	Rat, Pig, Bovine
Host	Rabbit
Clonality	Polyclonal
Calculated MW	63 KDa
Physical State	Liquid
Immunogen	KLH conjugated synthetic peptide derived from human KLHDC7B
Epitope Specificity	431-530/594
Isotype	IgG
Purity	
affinity purified by Protein A	
Buffer	0.01M TBS (pH7.4) with 1% BSA, 0.02% Proclin300 and 50% Glycerol.
SIMILARITY	Contains 5 Kelch repeats.
Important Note	This product as supplied is intended for research use only, not for use in human, therapeutic or diagnostic applications.

Background Descriptions

The BTB (Broad-Complex, Tramtrack and Bric a brac) domain, also known as the POZ (Poxvirus and Zinc finger) domain, is an N-terminal homodimerization domain that contains multiple copies of kelch repeats and/or C2H2-type zinc fingers. Proteins that contain BTB domains are thought to be involved in transcriptional regulation via control of chromatin structure and function. The Kelch domain-containing protein 7B (KLHDC7B) contains 5 Kelch repeats suggesting a role in transcription regulation. The gene encoding KLHDC6 maps to chromosome 22, which contains over 500 genes. As the second smallest human chromosome, 22 contains a surprising variety of interesting genes, including Phelan-McDermid syndrome, neurofibromatosis type 2 and autism.

KLHDC7B Polyclonal Antibody - Additional Information

Gene ID 113730

Other Names

Kelch domain-containing protein 7B, KLHDC7B

Dilution

```
<span class = "dilution_WB">WB~~1:1000</span><br \><span class = "dilution_IHC-P">IHC-P~~N/A</span><br \><span class = "dilution_IHC-F">IHC-F~~N/A</span><br \><span class = "dilution_IF">IF~~1:50~200</span><br \><span class = "dilution_ICC">ICC~~N/A</span><br \><span class = "dilution_E">E~~N/A</span>
```

Storage

Store at -20 °C for one year. Avoid repeated freeze/thaw cycles. When reconstituted in sterile pH 7.4 0.01M PBS or diluent of antibody the antibody is stable for at least two weeks at 2-4 °C.

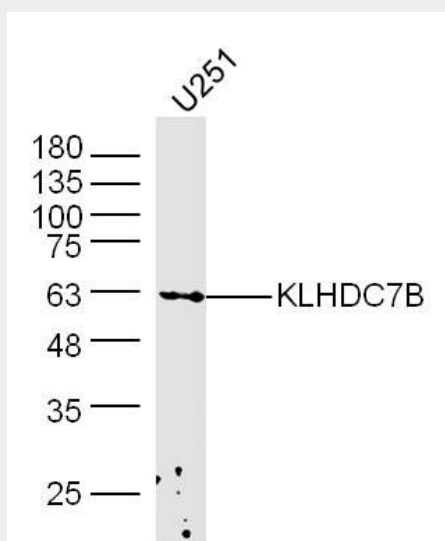
KLHDC7B Polyclonal Antibody - Protein Information

Name KLHDC7B

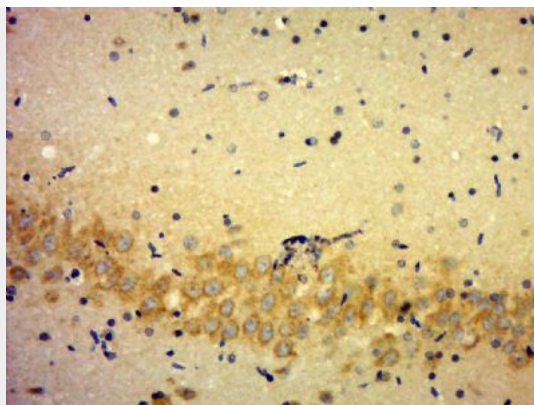
KLHDC7B Polyclonal Antibody - Protocols

Provided below are standard protocols that you may find useful for product applications.

- [Western Blot](#)
- [Blocking Peptides](#)
- [Dot Blot](#)
- [Immunohistochemistry](#)
- [Immunofluorescence](#)
- [Immunoprecipitation](#)
- [Flow Cytometry](#)
- [Cell Culture](#)

KLHDC7B Polyclonal Antibody - Images

Sample: U251 (human) cell Lysate at 40 ug
Primary: Anti-KLHDC7B(bs-16761R) at 1/300 dilution
Secondary: IRDye800CW Goat Anti-Rabbit IgG at 1/20000 dilution
Predicted band size: 63 kD
Observed band size: 63 kD



Paraformaldehyde-fixed, paraffin embedded (Rat brain); Antigen retrieval by boiling in sodium citrate buffer (pH6.0) for 15min; Block endogenous peroxidase by 3% hydrogen peroxide for 20 minutes; Blocking buffer (normal goat serum) at 37°C for 30min; Antibody incubation with (KLHDC7B) Polyclonal Antibody, Unconjugated (bs-16761R) at 1:500 overnight at 4°C, followed by a conjugated secondary (sp-0023) for 20 minutes and DAB staining.