



=["dilution\\_IHC-F">IHC-F](#)~[N/A](#)</span><br \><span class  
=["dilution\\_IF">IF](#)~[1:50~200](#)</span><br \><span class =["dilution\\_ICC">ICC](#)~[N/A](#)</span><br  
\><span class =["dilution\\_E">E](#)~[N/A](#)</span>

### Storage

Store at -20 °C for one year. Avoid repeated freeze/thaw cycles. When reconstituted in sterile pH 7.4 0.01M PBS or diluent of antibody the antibody is stable for at least two weeks at 2-4 °C.

## KLHL15 Polyclonal Antibody - Protein Information

**Name** KLHL15

**Synonyms** KIAA1677

### Function

Substrate-specific adapter for CUL3 E3 ubiquitin-protein ligase complex (PubMed:<a href="http://www.uniprot.org/citations/14528312" target="\_blank">14528312</a>, PubMed:<a href="http://www.uniprot.org/citations/27561354" target="\_blank">27561354</a>, PubMed:<a href="http://www.uniprot.org/citations/35219381" target="\_blank">35219381</a>). Acts as an adapter for CUL3 to target the serine/threonine-protein phosphatase 2A (PP2A) subunit PPP2R5B for ubiquitination and subsequent proteasomal degradation, thus promoting exchange with other regulatory subunits (PubMed:<a href="http://www.uniprot.org/citations/23135275" target="\_blank">23135275</a>). Acts as an adapter for CUL3 to target the DNA-end resection factor RBBP8/CtIP for ubiquitination and subsequent proteasomal degradation (PubMed:<a href="http://www.uniprot.org/citations/27561354" target="\_blank">27561354</a>, PubMed:<a href="http://www.uniprot.org/citations/35219381" target="\_blank">35219381</a>). Through the regulation of RBBP8/CtIP protein turnover, plays a key role in DNA damage response, favoring DNA double-strand repair through error-prone non-homologous end joining (NHEJ) over error-free, RBBP8-mediated homologous recombination (HR) (PubMed:<a href="http://www.uniprot.org/citations/27561354" target="\_blank">27561354</a>, PubMed:<a href="http://www.uniprot.org/citations/35219381" target="\_blank">35219381</a>).

### Cellular Location

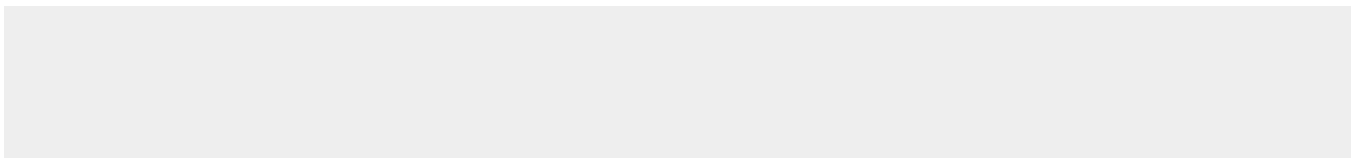
Nucleus.

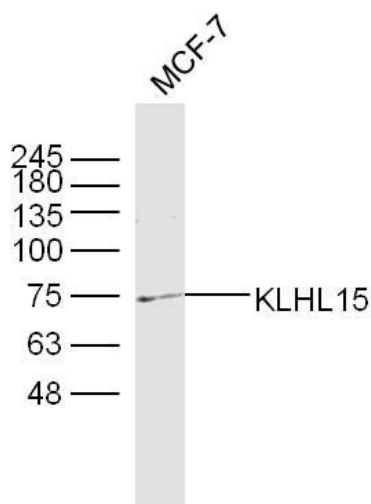
## KLHL15 Polyclonal Antibody - Protocols

Provided below are standard protocols that you may find useful for product applications.

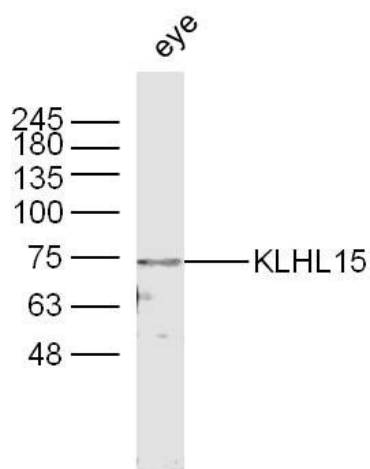
- [Western Blot](#)
- [Blocking Peptides](#)
- [Dot Blot](#)
- [Immunohistochemistry](#)
- [Immunofluorescence](#)
- [Immunoprecipitation](#)
- [Flow Cytometry](#)
- [Cell Culture](#)

## KLHL15 Polyclonal Antibody - Images





Sample: MCF-7 (human) cell lysate at 40 ug  
 Primary: Anti-KLHL15(bs-16764R) at 1/300 dilution  
 Secondary: IRDye800CW Goat Anti-Rabbit IgG at 1/20000 dilution  
 Predicted band size: 70 kD  
 Observed band size: 75 kD



Sample: Eye (mouse) lysate at 40 ug  
 Primary: Anti-KLHL15(bs-16764R) at 1/300 dilution  
 Secondary: IRDye800CW Goat Anti-Rabbit IgG at 1/20000 dilution  
 Predicted band size: 70 kD  
 Observed band size: 70 kD