

**KLRG2 Polyclonal Antibody**  
**Purified Rabbit Polyclonal Antibody (Pab)**  
**Catalog # AP56405****Specification****KLRG2 Polyclonal Antibody - Product Information**

Application	WB, IHC-P, IHC-F, IF, ICC
Primary Accession	<a href="#">A4D1S0</a>
Host	Rabbit
Clonality	Polyclonal
Calculated MW	43 KDa
Physical State	Liquid
Immunogen	KLH conjugated synthetic peptide derived from human KLRG2
Epitope Specificity	101-200/409
Isotype	IgG
<b>Purity</b>	
affinity purified by Protein A	
Buffer	0.01M TBS (pH7.4) with 1% BSA, 0.02% Proclin300 and 50% Glycerol.
SUBCELLULAR LOCATION	Membrane.
SIMILARITY	Contains 1 C-type lectin domain.
Important Note	This product as supplied is intended for research use only, not for use in human, therapeutic or diagnostic applications.

**KLRG2 Polyclonal Antibody - Additional Information****Gene ID** 346689**Other Names**

Killer cell lectin-like receptor subfamily G member 2, C-type lectin domain family 15 member B, KLRG2, CLEC15B

**Dilution**

<span class = "dilution\_WB">WB~~1:1000</span><br \><span class = "dilution\_IHC-P">IHC-P~~N/A</span><br \><span class = "dilution\_IHC-F">IHC-F~~N/A</span><br \><span class = "dilution\_IF">IF~~1:50~200</span><br \><span class = "dilution\_ICC">ICC~~N/A</span>

**Storage**

Store at -20 °C for one year. Avoid repeated freeze/thaw cycles. When reconstituted in sterile pH 7.4 0.01M PBS or diluent of antibody the antibody is stable for at least two weeks at 2-4 °C.

**KLRG2 Polyclonal Antibody - Protein Information****Name** KLRG2

**Synonyms** CLEC15B

**Cellular Location**

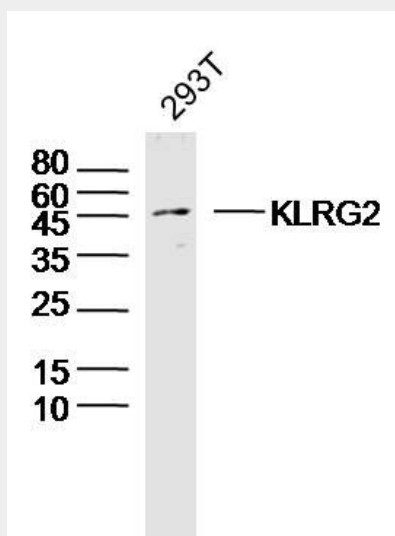
Membrane; Single-pass membrane protein

**KLRG2 Polyclonal Antibody - Protocols**

Provided below are standard protocols that you may find useful for product applications.

- [Western Blot](#)
- [Blocking Peptides](#)
- [Dot Blot](#)
- [Immunohistochemistry](#)
- [Immunofluorescence](#)
- [Immunoprecipitation](#)
- [Flow Cytometry](#)
- [Cell Culture](#)

**KLRG2 Polyclonal Antibody - Images**



Sample: 293T Cell (Human) Lysate at 40 ug  
Primary: Anti- KLRG2 (bs-16787R) at 1/300 dilution  
Secondary: IRDye800CW Goat Anti-Rabbit IgG at 1/20000 dilution  
Predicted band size: 43 kD  
Observed band size: 45 kD