

KPNA6 Polyclonal Antibody
Purified Rabbit Polyclonal Antibody (Pab)
Catalog # AP56410**Specification**

KPNA6 Polyclonal Antibody - Product Information

Application	WB
Primary Accession	O60684
Reactivity	Rat, Pig, Bovine
Host	Rabbit
Clonality	Polyclonal
Calculated MW	60030

KPNA6 Polyclonal Antibody - Additional Information**Gene ID** 23633**Other Names**

Importin subunit alpha-7, Karyopherin subunit alpha-6, KPNA6, IPOA7

Format

0.01M TBS(pH7.4), 0.09% (W/V) sodium azide and 50% Glyce

Storage

Store at -20 °C for one year. Avoid repeated freeze/thaw cycles. When reconstituted in sterile pH 7.4 0.01M PBS or diluent of antibody the antibody is stable for at least two weeks at 2-4 °C.

KPNA6 Polyclonal Antibody - Protein Information**Name** KPNA6**Synonyms** IPOA7**Function**

Functions in nuclear protein import as an adapter protein for nuclear receptor KPNB1. Binds specifically and directly to substrates containing either a simple or bipartite NLS motif. Docking of the importin/substrate complex to the nuclear pore complex (NPC) is mediated by KPNB1 through binding to nucleoporin FxFG repeats and the complex is subsequently translocated through the pore by an energy requiring, Ran-dependent mechanism. At the nucleoplasmic side of the NPC, Ran binds to importin-beta and the three components separate and importin-alpha and -beta are re-exported from the nucleus to the cytoplasm where GTP hydrolysis releases Ran from importin. The directionality of nuclear import is thought to be conferred by an asymmetric distribution of the GTP- and GDP-bound forms of Ran between the cytoplasm and nucleus.

Tissue Location

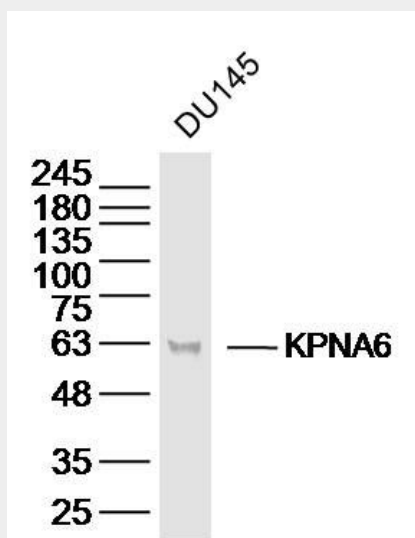
Widely expressed..

KPNA6 Polyclonal Antibody - Protocols

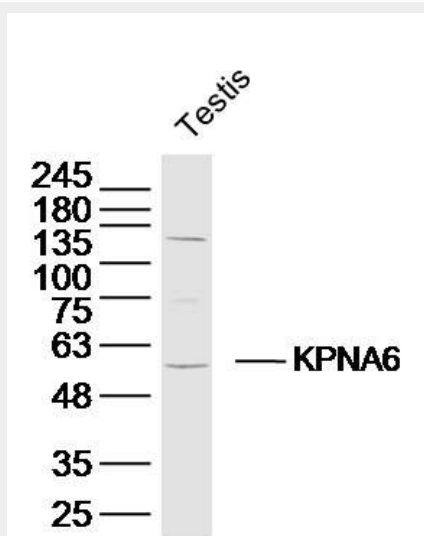
Provided below are standard protocols that you may find useful for product applications.

- [Western Blot](#)
- [Blocking Peptides](#)
- [Dot Blot](#)
- [Immunohistochemistry](#)
- [Immunofluorescence](#)
- [Immunoprecipitation](#)
- [Flow Cytometry](#)
- [Cell Culture](#)

KPNA6 Polyclonal Antibody - Images



Sample: DU145 Cell (Human) Lysate at 40 ug
Primary: Anti-KPNA6 (bs-16806R) at 1/300 dilution
Secondary: IRDye800CW Goat Anti-Rabbit IgG at 1/20000 dilution
Predicted band size: 60 kD
Observed band size: 63 kD



Sample: Testis (Mouse) Lysate at 40 ug
Primary: Anti-KPNA6 (bs-16806R) at 1/300 dilution
Secondary: IRDye800CW Goat Anti-Rabbit IgG at 1/20000 dilution
Predicted band size: 60 kD
Observed band size: 60 kD