

KREMEN1 Polyclonal Antibody

Purified Rabbit Polyclonal Antibody (Pab)

Catalog # AP56414

Specification

KREMEN1 Polyclonal Antibody - Product Information

Application	WB, IHC-P, IHC-F, IF, ICC, E
Primary Accession	Q96MU8
Reactivity	Rat, Bovine
Host	Rabbit
Clonality	Polyclonal
Calculated MW	50 KDa
Physical State	Liquid
Immunogen	KLH conjugated synthetic peptide derived from human KREMEN1
Epitope Specificity	101-200/473
Isotype	IgG
Purity	
affinity purified by Protein A	
Buffer	0.01M TBS (pH7.4) with 1% BSA, 0.02% Proclin300 and 50% Glycerol.
SUBCELLULAR LOCATION	Membrane {ECO:0000305}; Single-pass type I membrane protein {ECO:0000305}. Contains 1 CUB domain.
SIMILARITY	This product as supplied is intended for research use only, not for use in human, therapeutic or diagnostic applications.
Important Note	

Background Descriptions

This gene encodes a high-affinity dickkopf homolog 1 (DKK1) transmembrane receptor that functionally cooperates with DKK1 to block wingless (WNT)/beta-catenin signaling. The encoded protein is a component of a membrane complex that modulates canonical WNT signaling through lipoprotein receptor-related protein 6 (LRP6). It contains extracellular kringle, WSC, and CUB domains. Alternatively spliced transcript variants encoding distinct isoforms have been observed for this gene. [provided by RefSeq, Jul 2008]

KREMEN1 Polyclonal Antibody - Additional Information

Gene ID 83999

Other Names

Kremen protein 1, Dickkopf receptor, Kringle domain-containing transmembrane protein 1, Kringle-containing protein marking the eye and the nose, KREMEN1, KREMEN, KRM1

Dilution

WB~~1:1000<br \>IHC-P~~N/A<br \>IHC-F~~N/A<br \>IF~~1:50~200<br \>ICC~~N/A<br \>

\>E~ ~N/A

Format

0.01M TBS(pH7.4), 0.09% (W/V) sodium azide and 50% Glyce

Storage

Store at -20 °C for one year. Avoid repeated freeze/thaw cycles. When reconstituted in sterile pH 7.4 0.01M PBS or diluent of antibody the antibody is stable for at least two weeks at 2-4 °C.

KREMEN1 Polyclonal Antibody - Protein Information

Name KREMEN1

Synonyms KREMEN, KRM1

Function

Receptor for Dickkopf proteins. Cooperates with DKK1/2 to inhibit Wnt/beta-catenin signaling by promoting the endocytosis of Wnt receptors LRP5 and LRP6. In the absence of DKK1, potentiates Wnt-beta- catenin signaling by maintaining LRP5 or LRP6 at the cell membrane. Can trigger apoptosis in a Wnt-independent manner and this apoptotic activity is inhibited upon binding of the ligand DKK1. Plays a role in limb development; attenuates Wnt signaling in the developing limb to allow normal limb patterning and can also negatively regulate bone formation. Modulates cell fate decisions in the developing cochlea with an inhibitory role in hair cell fate specification.

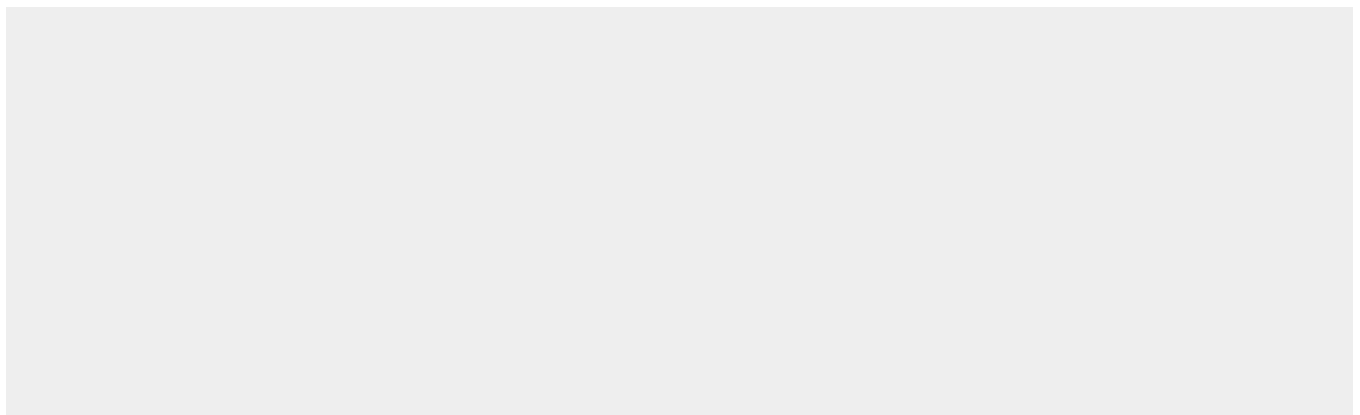
Cellular Location

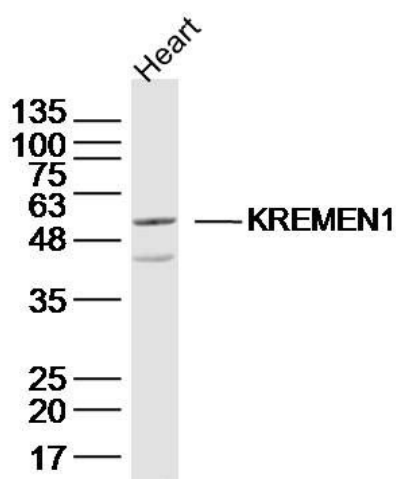
Cell membrane {ECO:0000250|UniProtKB:Q99N43}; Single-pass type I membrane protein

KREMEN1 Polyclonal Antibody - Protocols

Provided below are standard protocols that you may find useful for product applications.

- [Western Blot](#)
- [Blocking Peptides](#)
- [Dot Blot](#)
- [Immunohistochemistry](#)
- [Immunofluorescence](#)
- [Immunoprecipitation](#)
- [Flow Cytometry](#)
- [Cell Culture](#)

KREMEN1 Polyclonal Antibody - Images



Sample: Heart (Mouse) Lysate at 40 ug
Primary: Anti-KREMEN1 (bs-16812R) at 1/300 dilution
Secondary: IRDye800CW Goat Anti-Rabbit IgG at 1/20000 dilution
Predicted band size: 50 kD
Observed band size: 50 kD