

CTNNAL1 Polyclonal Antibody
Purified Rabbit Polyclonal Antibody (Pab)
Catalog # AP56441

Specification

CTNNAL1 Polyclonal Antibody - Product Information

Application	IHC-P, IHC-F, IF, E
Primary Accession	Q9UBT7
Reactivity	Rat
Host	Rabbit
Clonality	Polyclonal
Calculated MW	81 KDa
Physical State	Liquid
Immunogen	KLH conjugated synthetic peptide derived from human CTNNAL1
Epitope Specificity	151-250/743
Isotype	IgG
Purity	
affinity purified by Protein A	
Buffer	0.01M TBS (pH7.4) with 1% BSA, 0.02% Proclin300 and 50% Glycerol.
SUBCELLULAR LOCATION	Cytoplasm, cytoskeleton. Cell membrane; Peripheral membrane protein.
SIMILARITY	Belongs to the vinculin/alpha-catenin family.
SUBUNIT	Interacts with ARHGEF1.
Important Note	This product as supplied is intended for research use only, not for use in human, therapeutic or diagnostic applications.

Background Descriptions

CTNNAL1 acts as a scaffold in the Rho signalling pathway. May modulate the Rho pathway signaling by providing a scaffold for the Lbc Rho guanine nucleotide exchange factor. There are three different isoforms.

CTNNAL1 Polyclonal Antibody - Additional Information

Gene ID 8727

Other Names

Alpha-catulin, Alpha-catenin-related protein, ACRP, Catenin alpha-like protein 1, CTNNAL1

Target/Specificity

Widely expressed. Expressed at lower level in neural tissues and at the highest level in the adrenal gland.

Dilution

IHC-P ~ ~ N/A
IHC-F ~ ~ N/A

=IF~1:50~200<br \>E~N/A

Format

0.01M TBS(pH7.4), 0.09% (W/V) sodium azide and 50% Glyce

Storage

Store at -20 °C for one year. Avoid repeated freeze/thaw cycles. When reconstituted in sterile pH 7.4 0.01M PBS or diluent of antibody the antibody is stable for at least two weeks at 2-4 °C.

CTNNAL1 Polyclonal Antibody - Protein Information

Name CTNNAL1

Function

May modulate the Rho pathway signaling by providing a scaffold for the Lbc Rho guanine nucleotide exchange factor (ARHGEF1).

Cellular Location

Cytoplasm, cytoskeleton. Cell membrane; Peripheral membrane protein

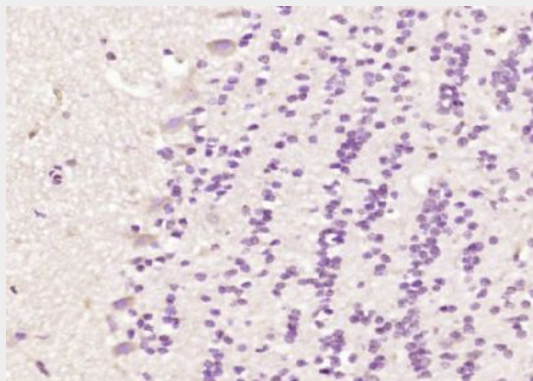
Tissue Location

Widely expressed. Expressed at lower level in neural tissues and at the highest level in the adrenal gland

CTNNAL1 Polyclonal Antibody - Protocols

Provided below are standard protocols that you may find useful for product applications.

- [Western Blot](#)
- [Blocking Peptides](#)
- [Dot Blot](#)
- [Immunohistochemistry](#)
- [Immunofluorescence](#)
- [Immunoprecipitation](#)
- [Flow Cytometry](#)
- [Cell Culture](#)

CTNNAL1 Polyclonal Antibody - Images

Paraformaldehyde-fixed, paraffin embedded (rat brain); Antigen retrieval by boiling in sodium

citrate buffer (pH6.0) for 15min; Block endogenous peroxidase by 3% hydrogen peroxide for 20 minutes; Blocking buffer (normal goat serum) at 37°C for 30min; Antibody incubation with (CTNNAL1) Polyclonal Antibody, Unconjugated (bs-1685R) at 1:200 overnight at 4°C, followed by operating according to SP Kit(Rabbit) (sp-0023) instructions and DAB staining.