

KCNH4 Polyclonal Antibody
Purified Rabbit Polyclonal Antibody (Pab)
Catalog # AP56453**Specification**

KCNH4 Polyclonal Antibody - Product Information

Application	WB
Primary Accession	O9UQ05
Reactivity	Rat, Pig, Dog, Bovine
Host	Rabbit
Clonality	Polyclonal
Calculated MW	111693

KCNH4 Polyclonal Antibody - Additional Information**Gene ID** 23415**Other Names**

Potassium voltage-gated channel subfamily H member 4, Brain-specific eag-like channel 2, BEC2, Ether-a-go-go-like potassium channel 1, ELK channel 1, ELK1, Voltage-gated potassium channel subunit Kv12.3, KCNH4

Format

0.01M TBS(pH7.4), 0.09% (W/V) sodium azide and 50% Glyce

Storage

Store at -20 °C for one year. Avoid repeated freeze/thaw cycles. When reconstituted in sterile pH 7.4 0.01M PBS or diluent of antibody the antibody is stable for at least two weeks at 2-4 °C.

KCNH4 Polyclonal Antibody - Protein Information**Name** KCNH4**Function**

Pore-forming (alpha) subunit of voltage-gated potassium channel. Elicits an outward current, but shows no inactivation. Channel properties may be modulated by cAMP and subunit assembly.

Cellular Location

Membrane; Multi-pass membrane protein.

Tissue Location

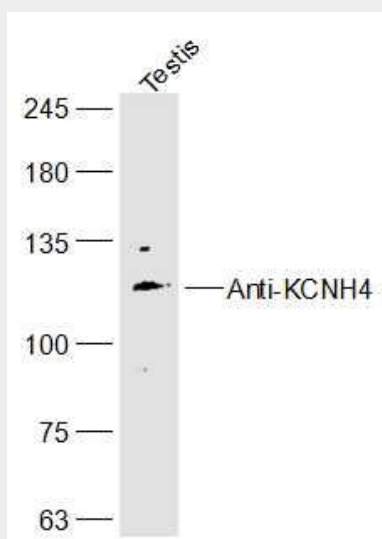
Detected only in brain, in particular in the telencephalon. Detected in putamen and caudate nucleus, and at lower levels in cerebral cortex, occipital and hippocampus

KCNH4 Polyclonal Antibody - Protocols

Provided below are standard protocols that you may find useful for product applications.

- [Western Blot](#)
- [Blocking Peptides](#)
- [Dot Blot](#)
- [Immunohistochemistry](#)
- [Immunofluorescence](#)
- [Immunoprecipitation](#)
- [Flow Cytometry](#)
- [Cell Culture](#)

KCNH4 Polyclonal Antibody - Images



Sample:

Testis(Rat) Cell Lysate at 40 ug

Primary: Anti-KCNH4 (bs-16885R) at 1/300 dilution

Secondary: IRDye800CW Goat Anti-Rabbit IgG at 1/20000 dilution

Predicted band size: 112 kD

Observed band size: 112 kD