

KCNS1 Polyclonal Antibody
Purified Rabbit Polyclonal Antibody (Pab)
Catalog # AP56466**Specification****KCNS1 Polyclonal Antibody - Product Information**

Application	WB, IHC-P, IHC-F, IF, ICC
Primary Accession	O96KK3
Reactivity	Rat, Dog, Bovine
Host	Rabbit
Clonality	Polyclonal
Calculated MW	58372

KCNS1 Polyclonal Antibody - Additional Information**Gene ID** 3787**Other Names**

Potassium voltage-gated channel subfamily S member 1, Delayed-rectifier K(+) channel alpha subunit 1, Voltage-gated potassium channel subunit Kv9.1, KCNS1

Dilution

WB~~1:1000<br \>IHC-P~~N/A<br \>IHC-F~~N/A<br \>IF~~1:50~200<br \>ICC~~N/A

Format

0.01M TBS(pH7.4), 0.09% (W/V) sodium azide and 50% Glyce

Storage

Store at -20 °C for one year. Avoid repeated freeze/thaw cycles. When reconstituted in sterile pH 7.4 0.01M PBS or diluent of antibody the antibody is stable for at least two weeks at 2-4 °C.

KCNS1 Polyclonal Antibody - Protein Information**Name** KCNS1 ([HGNC:6300](#))**Function**

Potassium channel regulatory subunit that modulate the delayed rectifier voltage-gated potassium channel activity of KCNB1 and KCNB2 by altering their kinetics, expression levels, and shifting the half-inactivation potential to more polarized values (PubMed:10484328). While it does not form functional channels on its own, it can form functional heterotetrameric channels with KCNB1 and KCNB2 (PubMed:10484328). Each regulatory subunit has unique regulatory properties that can lead to extensive inhibition, significant changes in kinetics, and/or substantial shifts in the voltage dependencies of the inactivation process (By similarity).

Cellular Location

Cell membrane; Multi-pass membrane protein. Note=May not reach the plasma membrane but remain in an intracellular compartment in the absence of KCNB1 or KCNB2 (PubMed:10484328)

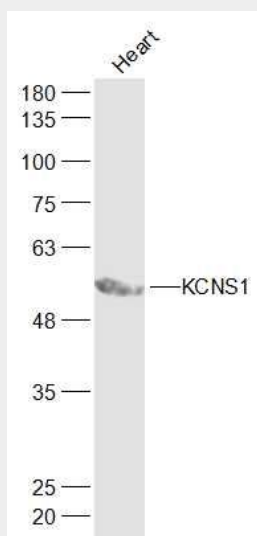
Tissue Location

Detected in all tissues tested with the exception of skeletal muscle (PubMed:10484328). Highly expressed in adult and fetal brain, fetal kidney and lung, and adult prostate and testis (PubMed:10484328).

KCNS1 Polyclonal Antibody - Protocols

Provided below are standard protocols that you may find useful for product applications.

- [Western Blot](#)
- [Blocking Peptides](#)
- [Dot Blot](#)
- [Immunohistochemistry](#)
- [Immunofluorescence](#)
- [Immunoprecipitation](#)
- [Flow Cytometry](#)
- [Cell Culture](#)

KCNS1 Polyclonal Antibody - Images

Sample:

Heart(Rat) Cell Lysate at 40 ug

Primary: Anti-KCNS1 (bs-16916R) at 1/300 dilution

Secondary: IRDye800CW Goat Anti-Rabbit IgG at 1/20000 dilution

Predicted band size: 58 kD

Observed band size: 58 kD