

KDM3A/JMJD1A Polyclonal Antibody
Purified Rabbit Polyclonal Antibody (Pab)
Catalog # AP56473**Specification****KDM3A/JMJD1A Polyclonal Antibody - Product Information**

| | |
|-------------------|-----------------------------------|
| Application | IHC-P, IHC-F, ICC, E |
| Primary Accession | O9Y4C1 |
| Reactivity | Rat, Pig, Chimpanzee, Dog, Bovine |
| Host | Rabbit |
| Clonality | Polyclonal |
| Calculated MW | 147341 |

KDM3A/JMJD1A Polyclonal Antibody - Additional Information**Gene ID** 55818**Other Names**

Lysine-specific demethylase 3A, 1.14.11.65, JmjC domain-containing histone demethylation protein 2A, Jumonji domain-containing protein 1A, [histone H3]-dimethyl-L-lysine(9) demethylase 3A, KDM3A, JHDM2A, JMJD1, JMJD1A, KIAA0742, TSGA

Dilution

IHC-P~N/A
IHC-F~N/A
ICC~N/A
E~N/A

Format

0.01M TBS(pH7.4), 0.09% (W/V) sodium azide and 50% Glyce

Storage

Store at -20 °C for one year. Avoid repeated freeze/thaw cycles. When reconstituted in sterile pH 7.4 0.01M PBS or diluent of antibody the antibody is stable for at least two weeks at 2-4 °C.

KDM3A/JMJD1A Polyclonal Antibody - Protein Information**Name** KDM3A**Synonyms** JHDM2A, JMJD1, JMJD1A, KIAA0742, TSGA**Function**

Histone demethylase that specifically demethylates 'Lys-9' of histone H3, thereby playing a central role in histone code. Preferentially demethylates mono- and dimethylated H3 'Lys-9' residue, with a preference for dimethylated residue, while it has weak or no activity on trimethylated H3 'Lys-9'. Demethylation of Lys residue generates formaldehyde and succinate. Involved in hormone-dependent transcriptional activation, by participating in recruitment to androgen-receptor target genes, resulting in H3 'Lys-9' demethylation and transcriptional activation. Involved in spermatogenesis by regulating expression of target genes such as PRM1

and TNP1 which are required for packaging and condensation of sperm chromatin. Involved in obesity resistance through regulation of metabolic genes such as PPARA and UCP1.

Cellular Location

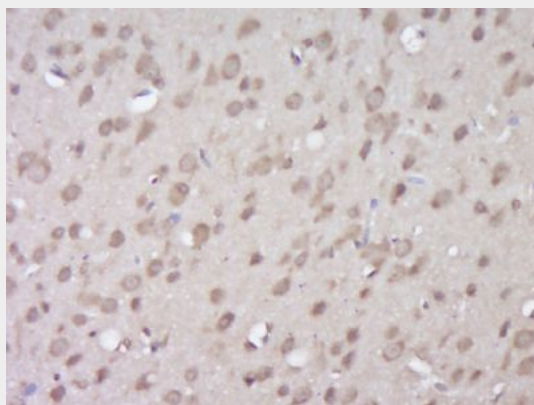
Cytoplasm. Nucleus. Note=Nuclear in round spermatids. When spermatids start to elongate, localizes to the cytoplasm where it forms distinct foci which disappear in mature spermatozoa (By similarity).

KDM3A/JMJD1A Polyclonal Antibody - Protocols

Provided below are standard protocols that you may find useful for product applications.

- [Western Blot](#)
- [Blocking Peptides](#)
- [Dot Blot](#)
- [Immunohistochemistry](#)
- [Immunofluorescence](#)
- [Immunoprecipitation](#)
- [Flow Cytometry](#)
- [Cell Culture](#)

KDM3A/JMJD1A Polyclonal Antibody - Images



Paraformaldehyde-fixed, paraffin embedded (Rat brain); Antigen retrieval by boiling in sodium citrate buffer (pH6.0) for 15min; Block endogenous peroxidase by 3% hydrogen peroxide for 20 minutes; Blocking buffer (normal goat serum) at 37°C for 30min; Antibody incubation with (KDM3A) Polyclonal Antibody, Unconjugated (bs-16944R) at 1:400 overnight at 4°C, followed by operating according to SP Kit(Rabbit) (sp-0023) instructions and DAB staining.