

Keratin 39 Polyclonal Antibody
Purified Rabbit Polyclonal Antibody (Pab)
Catalog # AP56475**Specification**

Keratin 39 Polyclonal Antibody - Product Information

Application	WB
Primary Accession	Q6A163
Reactivity	Rat, Pig
Host	Rabbit
Clonality	Polyclonal
Calculated MW	55651

Keratin 39 Polyclonal Antibody - Additional Information**Gene ID** 390792**Other Names**

Keratin, type I cytoskeletal 39, Cytokeratin-39, CK-39, Keratin-39, K39, Type I hair keratin Ka35, KRT39, KA35

Format

0.01M TBS(pH7.4), 0.09% (W/V) sodium azide and 50% Glyce

Storage

Store at -20 °C for one year. Avoid repeated freeze/thaw cycles. When reconstituted in sterile pH 7.4 0.01M PBS or diluent of antibody the antibody is stable for at least two weeks at 2-4 °C.

Keratin 39 Polyclonal Antibody - Protein Information**Name** KRT39**Synonyms** KA35**Function**

May play a role in late hair differentiation.

Tissue Location

Expressed in skin and scalp. In the hair follicle, it is present in the upper hair cuticle and the upper cortex. Also present in the in the upper portion of beard hairs (at protein level)

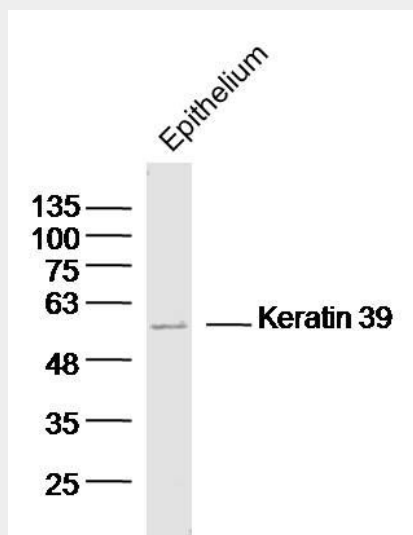
Keratin 39 Polyclonal Antibody - Protocols

Provided below are standard protocols that you may find useful for product applications.

- [Western Blot](#)

- [Blocking Peptides](#)
- [Dot Blot](#)
- [Immunohistochemistry](#)
- [Immunofluorescence](#)
- [Immunoprecipitation](#)
- [Flow Cytometry](#)
- [Cell Culture](#)

Keratin 39 Polyclonal Antibody - Images



Sample: Epithelium(Mouse) Lysate at 40 ug
Primary: Anti-Keratin 39(bs-16950R) at 1/300 dilution
Secondary: IRDye800CW Goat Anti-Rabbit IgG at 1/20000 dilution
Predicted band size: 56 kD
Observed band size: 56 kD