

**KIFC3 Polyclonal Antibody**  
**Purified Rabbit Polyclonal Antibody (Pab)**  
**Catalog # AP56540****Specification**

---

**KIFC3 Polyclonal Antibody - Product Information**

Application	WB
Primary Accession	<a href="#">Q9BVG8</a>
Reactivity	Rat, Pig, Dog, Bovine
Host	Rabbit
Clonality	Polyclonal
Calculated MW	92775

**KIFC3 Polyclonal Antibody - Additional Information****Gene ID** 3801**Other Names**

Kinesin-like protein KIFC3, KIFC3

**Format**

0.01M TBS(pH7.4), 0.09% (W/V) sodium azide and 50% Glyce

**Storage**

Store at -20 °C for one year. Avoid repeated freeze/thaw cycles. When reconstituted in sterile pH 7.4 0.01M PBS or diluent of antibody the antibody is stable for at least two weeks at 2-4 °C.

**KIFC3 Polyclonal Antibody - Protein Information****Name** KIFC3**Function**

Minus-end microtubule-dependent motor protein. Involved in apically targeted transport (By similarity). Required for zonula adherens maintenance.

**Cellular Location**

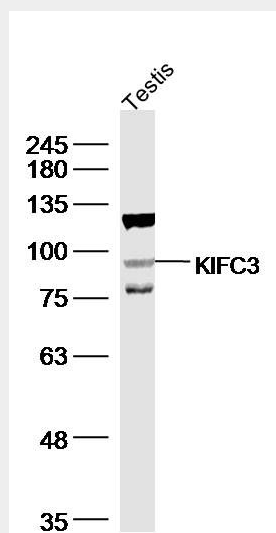
Cell junction, adherens junction. Cytoplasm, cytoskeleton, microtubule organizing center, centrosome Cytoplasmic vesicle membrane; Peripheral membrane protein. Note=Apical cell membrane. On membrane organelles immediately beneath the apical plasma membrane of renal tubular epithelial cells. Localized in the distal tubules and loops of Henle in the kidney, but not in the proximal tubules or the glomeruli, with stronger staining in the apical area of these epithelial cells (By similarity). Localizes along zonula adherens only at mature cell-cell contacts.

**KIFC3 Polyclonal Antibody - Protocols**

Provided below are standard protocols that you may find useful for product applications.

- [Western Blot](#)
- [Blocking Peptides](#)
- [Dot Blot](#)
- [Immunohistochemistry](#)
- [Immunofluorescence](#)
- [Immunoprecipitation](#)
- [Flow Cytometry](#)
- [Cell Culture](#)

#### KIFC3 Polyclonal Antibody - Images



Sample: Testis (Mouse) Lysate at 40 ug  
Primary: Anti-KIFC3 (bs-17060R) at 1/300 dilution  
Secondary: IRDye800CW Goat Anti-Rabbit IgG at 1/20000 dilution  
Predicted band size: 93 kD  
Observed band size: 93 kD