

LARP4B/LARP5 Polyclonal Antibody
Purified Rabbit Polyclonal Antibody (Pab)
Catalog # AP56560**Specification****LARP4B/LARP5 Polyclonal Antibody - Product Information**

Application	WB, IHC-P, IHC-F, IF, ICC
Primary Accession	Q92615
Reactivity	Rat
Host	Rabbit
Clonality	Polyclonal
Calculated MW	81 KDa
Physical State	Liquid
Immunogen	KLH conjugated synthetic peptide derived from human LARP4B/LARP5
Epitope Specificity	401-500/738
Isotype	IgG
Purity	
affinity purified by Protein A	
Buffer	0.01M TBS (pH7.4) with 1% BSA, 0.02% Proclin300 and 50% Glycerol.
SUBCELLULAR LOCATION	Cytoplasm, cytosol
SIMILARITY	Contains 1 HTH La-type RNA-binding domain. Contains 1 RRM (RNA recognition motif) domain.
SUBUNIT	Interacts with PABPC1 and GNB2L1. Associates with polysomes via the 40S ribosomal subunit.
Important Note	This product as supplied is intended for research use only, not for use in human, therapeutic or diagnostic applications.

Background Descriptions

This gene encodes a member of an evolutionarily conserved protein family implicated in RNA metabolism and translation. Members of this family are characterized by the presence of an La motif, which is often located adjacent to one or more RNA recognition motifs (RRM). Together, the two motifs constitute the functional region of the protein and enable its interaction with the RNA substrate. This protein family is divided into five sub-families: the genuine La proteins and four La-related protein (LARP) sub-families. The protein encoded by this gene belongs to LARP sub-family 4. It is a cytoplasmic protein that may play a stimulatory role in translation. [provided by RefSeq, Oct 2012]

LARP4B/LARP5 Polyclonal Antibody - Additional Information**Gene ID** 23185**Other Names**

La-related protein 4B, La ribonucleoprotein domain family member 4B, La ribonucleoprotein domain family member 5, La-related protein 5, LARP4B, KIAA0217, LARP5

Dilution

WB~~1:1000<br \>IHC-P~~N/A<br \>IHC-F~~N/A<br \>IF~~1:50~200<br \>ICC~~N/A

Format

0.01M TBS(pH7.4), 0.09% (W/V) sodium azide and 50% Glyce

Storage

Store at -20 °C for one year. Avoid repeated freeze/thaw cycles. When reconstituted in sterile pH 7.4 0.01M PBS or diluent of antibody the antibody is stable for at least two weeks at 2-4 °C.

LARP4B/LARP5 Polyclonal Antibody - Protein Information

Name LARP4B

Synonyms KIAA0217, LARP5

Function

Stimulates mRNA translation.

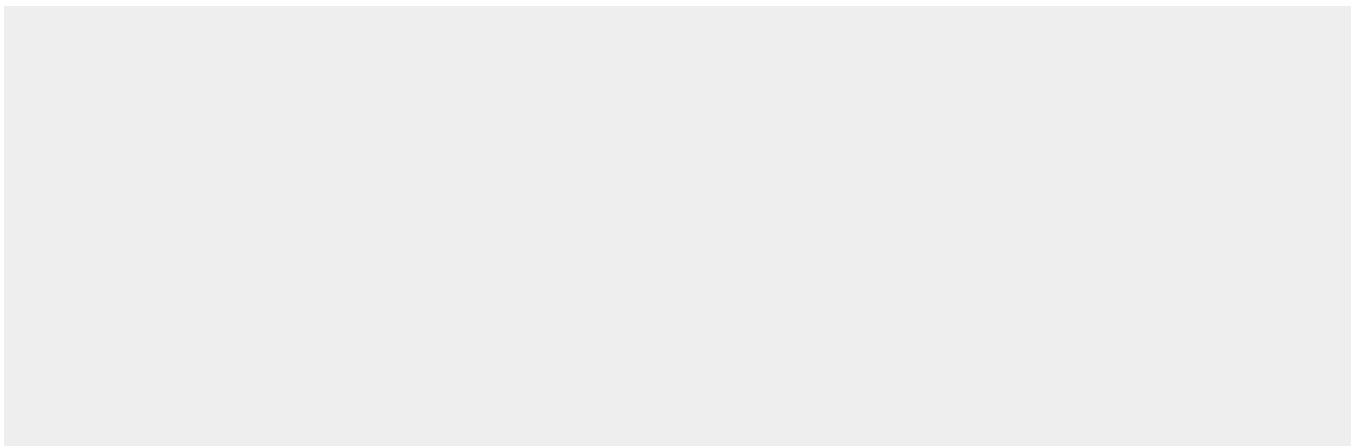
Cellular Location

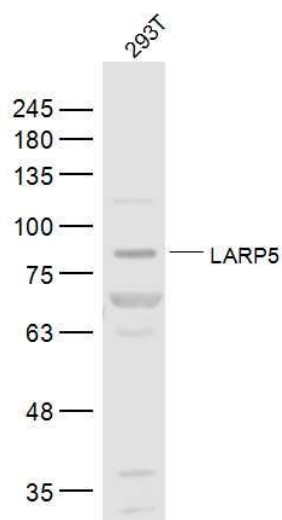
Cytoplasm, cytosol. Note=Localized in cytoplasmic mRNP granules containing untranslated mRNAs in response to arsenite treatment.

LARP4B/LARP5 Polyclonal Antibody - Protocols

Provided below are standard protocols that you may find useful for product applications.

- [Western Blot](#)
- [Blocking Peptides](#)
- [Dot Blot](#)
- [Immunohistochemistry](#)
- [Immunofluorescence](#)
- [Immunoprecipitation](#)
- [Flow Cytometry](#)
- [Cell Culture](#)

LARP4B/LARP5 Polyclonal Antibody - Images



Sample:

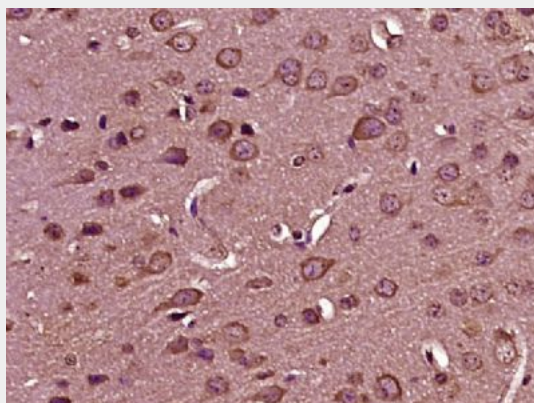
293T(Human) Cell Lysate at 30 ug

Primary: Anti-LARP5 (bs-17104R) at 1/300 dilution

Secondary: IRDye800CW Goat Anti-Rabbit IgG at 1/20000 dilution

Predicted band size: 81 kD

Observed band size: 81 kD



Paraformaldehyde-fixed, paraffin embedded (mouse brain tissue); Antigen retrieval by boiling in sodium citrate buffer (pH6.0) for 15min; Block endogenous peroxidase by 3% hydrogen peroxide for 20 minutes; Blocking buffer (normal goat serum) at 37°C for 30min; Antibody incubation with (LARP4B) Polyclonal Antibody, Unconjugated (bs-17104R) at 1:400 overnight at 4°C, followed by operating according to SP Kit(Rabbit) (sp-0023) instructions and DAB staining.