

Tropomodulin 2 Polyclonal Antibody
Purified Rabbit Polyclonal Antibody (Pab)
Catalog # AP56583

Specification

Tropomodulin 2 Polyclonal Antibody - Product Information

Application	WB, IHC-P, IHC-F, IF, ICC, E
Primary Accession	Q9NZR1
Reactivity	Rat, Pig, Dog, Bovine
Host	Rabbit
Clonality	Polyclonal
Calculated MW	40 KDa
Physical State	Liquid
Immunogen	KLH conjugated synthetic peptide derived from human Tropomodulin 2
Epitope Specificity	251-351/351
Isotype	IgG
Purity	
affinity purified by Protein A	
Buffer	0.01M TBS (pH7.4) with 1% BSA, 0.02% Proclin300 and 50% Glycerol.
SUBCELLULAR LOCATION	Cytoplasm; cytoskeleton
SIMILARITY	Belongs to the tropomodulin family.
SUBUNIT	Binds to the N-terminus of tropomyosin and to actin.
Important Note	This product as supplied is intended for research use only, not for use in human, therapeutic or diagnostic applications.

Background Descriptions

This gene encodes a neuronal-specific member of the tropomodulin family of actin-regulatory proteins. The encoded protein caps the pointed end of actin filaments preventing both elongation and depolymerization. The capping activity of this protein is dependent on its association with tropomyosin. Alternatively spliced transcript variants encoding different isoforms have been described. [provided by RefSeq, Dec 2008]

Tropomodulin 2 Polyclonal Antibody - Additional Information

Gene ID 29767

Other Names

Tropomodulin-2, Neuronal tropomodulin, N-Tmod, TMOD2, NTMOD

Target/Specificity

Neuronal-tissue specific.

Dilution

WB~~1:1000<br \>IHC-P~~N/A<br \><span class

=IHC-F~~N/A<br \>IF~~1:50~200<br \>ICC~~N/A<br \>E~~N/A

Storage

Store at -20 °C for one year. Avoid repeated freeze/thaw cycles. When reconstituted in sterile pH 7.4 0.01M PBS or diluent of antibody the antibody is stable for at least two weeks at 2-4 °C.

Tropomodulin 2 Polyclonal Antibody - Protein Information

Name TMOD2

Synonyms NTMOD

Function

Blocks the elongation and depolymerization of the actin filaments at the pointed end. The Tmod/TM complex contributes to the formation of the short actin protofilament, which in turn defines the geometry of the membrane skeleton (By similarity).

Cellular Location

Cytoplasm, cytoskeleton.

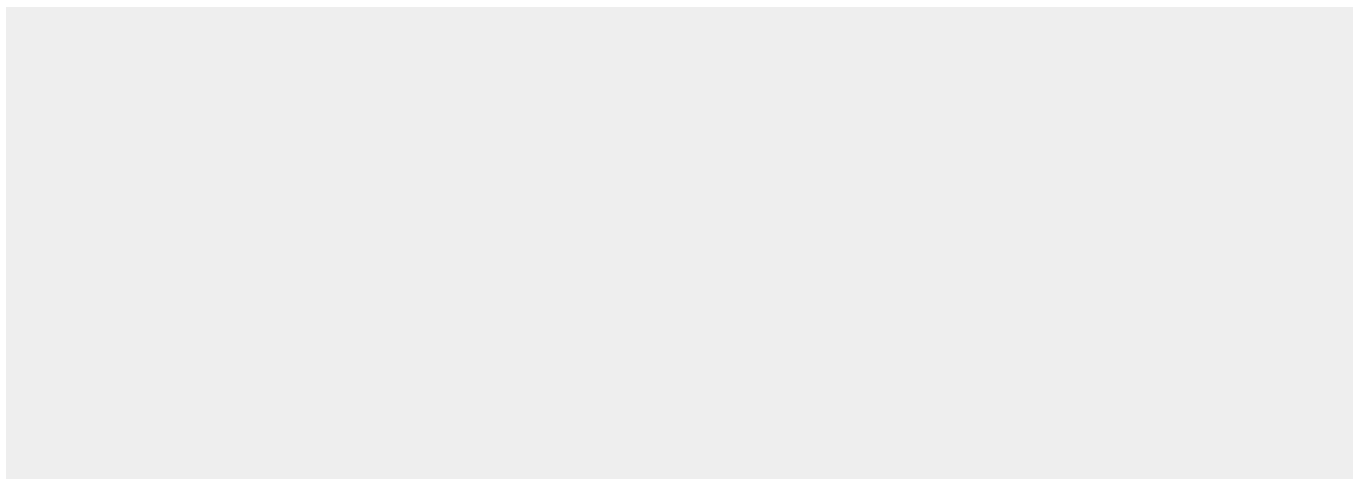
Tissue Location

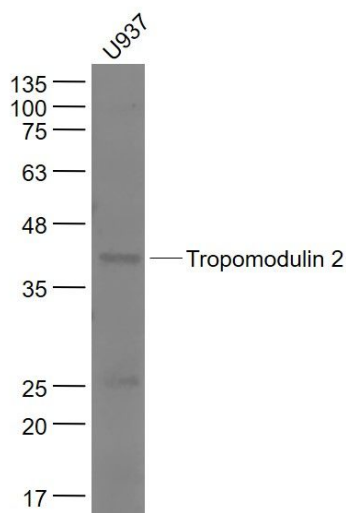
Neuronal-tissue specific.

Tropomodulin 2 Polyclonal Antibody - Protocols

Provided below are standard protocols that you may find useful for product applications.

- [Western Blot](#)
- [Blocking Peptides](#)
- [Dot Blot](#)
- [Immunohistochemistry](#)
- [Immunofluorescence](#)
- [Immunoprecipitation](#)
- [Flow Cytometry](#)
- [Cell Culture](#)

Tropomodulin 2 Polyclonal Antibody - Images



Sample:

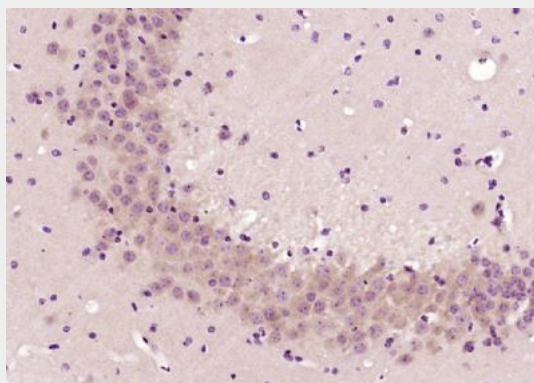
U937(Human) Cell Lysate at 30 ug

Primary: Anti- Tropomodulin 2 (bs-17155R) at 1/1000 dilution

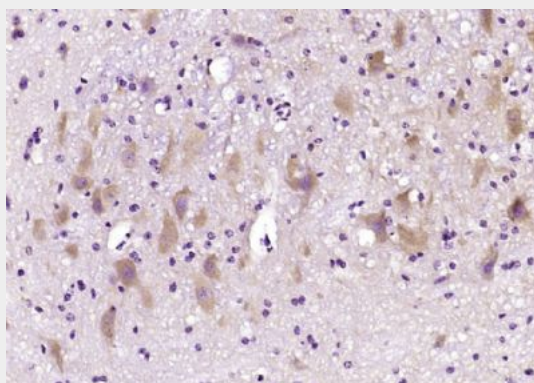
Secondary: IRDye800CW Goat Anti-Rabbit IgG at 1/20000 dilution

Predicted band size: 40 kD

Observed band size: 40 kD



Paraformaldehyde-fixed, paraffin embedded (mouse brain); Antigen retrieval by boiling in sodium citrate buffer (pH6.0) for 15min; Block endogenous peroxidase by 3% hydrogen peroxide for 20 minutes; Blocking buffer (normal goat serum) at 37°C for 30min; Antibody incubation with (Tropomodulin 2) Polyclonal Antibody, Unconjugated (bs-17155R) at 1:200 overnight at 4°C, followed by operating according to SP Kit(Rabbit) (sp-0023) instructions and DAB staining.



Paraformaldehyde-fixed, paraffin embedded (mouse cerebellum); Antigen retrieval by boiling in

sodium citrate buffer (pH6.0) for 15min; Block endogenous peroxidase by 3% hydrogen peroxide for 20 minutes; Blocking buffer (normal goat serum) at 37°C for 30min; Antibody incubation with (Tropomodulin 2) Polyclonal Antibody, Unconjugated (bs-17155R) at 1:200 overnight at 4°C, followed by operating according to SP Kit(Rabbit) (sp-0023) instructions and DAB staining.