

Jaw1 Polyclonal Antibody
Purified Rabbit Polyclonal Antibody (Pab)
Catalog # AP56604**Specification**

Jaw1 Polyclonal Antibody - Product Information

Application	IHC-P, WB
Primary Accession	Q12912
Reactivity	Rat
Host	Rabbit
Clonality	Polyclonal
Calculated MW	62122

Jaw1 Polyclonal Antibody - Additional Information**Gene ID** 4033**Other Names**

Inositol 1, 4, 5-triphosphate receptor associated 2, Lymphoid-restricted membrane protein, Protein Jaw1, Processed inositol 1, 4, 5-triphosphate receptor associated 2, IRAG2 (HGNC:6690), JAW1, LRMP

Format

0.01M TBS(pH7.4), 0.09% (W/V) sodium azide and 50% Glyce

Storage

Store at -20 °C for one year. Avoid repeated freeze/thaw cycles. When reconstituted in sterile pH 7.4 0.01M PBS or diluent of antibody the antibody is stable for at least two weeks at 2-4 °C.

Jaw1 Polyclonal Antibody - Protein Information**Name** IRAG2 ([HGNC:6690](#))**Synonyms** JAW1, LRMP**Function**

Plays a role in the delivery of peptides to major histocompatibility complex (MHC) class I molecules; this occurs in a transporter associated with antigen processing (TAP)-independent manner. May play a role in taste signal transduction via ITPR3. May play a role during fertilization in pronucleus congression and fusion. Plays a role in maintaining nuclear shape, maybe as a component of the LINC complex and through interaction with microtubules. Plays a role in the regulation of cellular excitability by regulating the hyperpolarization-activated cyclic nucleotide-gated HCN4 channel activity (By similarity).

Cellular Location

[Processed inositol 1,4,5-triphosphate receptor associated 2]: Cytoplasm
{ECO:0000250|UniProtKB:Q60664}

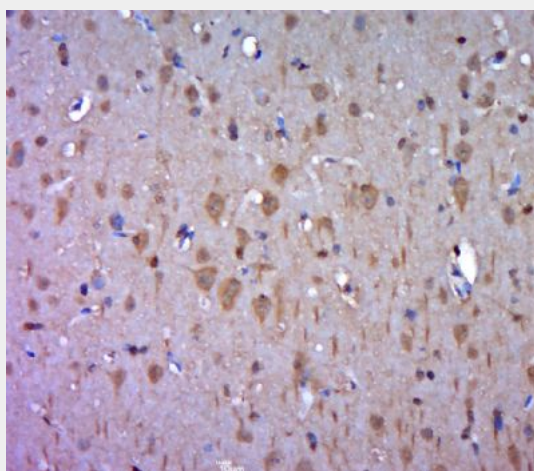
Tissue Location

Expressed at high levels in pre B-cells, mature B- cells and pre T-cells. Expressed at low levels in mature T-cells and plasma B-cells. Expressed in germinal center B-cells, splenic marginal zone cells and B-cell lymphomas. Expressed in neuronal cells in the cerebral cortex, epithelial cells in tonsil, adrenal glands, zymogen- producing cells in the stomach and epithelial cells in seminal vesicles.

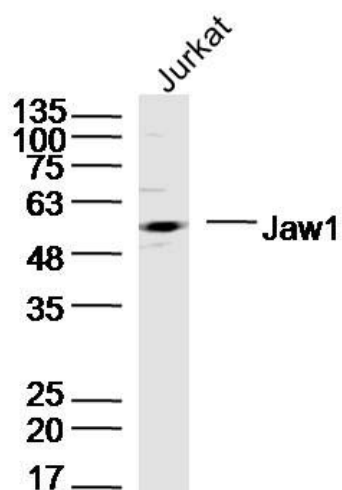
Jaw1 Polyclonal Antibody - Protocols

Provided below are standard protocols that you may find useful for product applications.

- [Western Blot](#)
- [Blocking Peptides](#)
- [Dot Blot](#)
- [Immunohistochemistry](#)
- [Immunofluorescence](#)
- [Immunoprecipitation](#)
- [Flow Cytometry](#)
- [Cell Culture](#)

Jaw1 Polyclonal Antibody - Images

Paraformaldehyde-fixed, paraffin embedded (rat brain tissue); Antigen retrieval by boiling in sodium citrate buffer (pH6.0) for 15min; Block endogenous peroxidase by 3% hydrogen peroxide for 20 minutes; Blocking buffer (normal goat serum) at 37°C for 30min; Antibody incubation with (Jaw1) Polyclonal Antibody, Unconjugated (bs-17199R) at 1:400 overnight at 4°C, followed by a conjugated secondary (sp-0023) for 20 minutes and DAB staining.



Sample: Jurkat (Human) Cell Lysate at 40 ug
Primary: Anti-Jaw1(bs-17199R) at 1/300 dilution
Secondary: IRDye800CW Goat Anti-Rabbit IgG at 1/20000 dilution
Predicted band size: 62 kD
Observed band size: 62 kD