

TOM1L2 Polyclonal Antibody
Purified Rabbit Polyclonal Antibody (Pab)
Catalog # AP56616

Specification

TOM1L2 Polyclonal Antibody - Product Information

Application	WB, IHC-P, IHC-F, IF, ICC, E
Primary Accession	Q6ZVM7
Reactivity	Rat, Dog
Host	Rabbit
Clonality	Polyclonal
Calculated MW	56 KDa
Physical State	Liquid
Immunogen	KLH conjugated synthetic peptide derived from human TOM1L2
Epitope Specificity	331-430/507
Isotype	IgG
Purity	
affinity purified by Protein A	
Buffer	0.01M TBS (pH7.4) with 1% BSA, 0.02% Proclin300 and 50% Glycerol.
SIMILARITY	Belongs to the TOM1 family. Contains 1 GAT domain. Contains 1 VHS domain.
Important Note	This product as supplied is intended for research use only, not for use in human, therapeutic or diagnostic applications.

Background Descriptions

Probable role in protein transport. May regulate growth factor-induced mitogenic signaling.

TOM1L2 Polyclonal Antibody - Additional Information

Gene ID 146691

Other Names

TOM1-like protein 2, Target of Myb-like protein 2, TOM1L2

Target/Specificity

Ubiquitously expressed with higher expression in heart and skeletal muscle.

Dilution

WB~~1:1000<br \>IHC-P~~N/A<br \>IHC-F~~N/A<br \>IF~~1:50~200<br \>ICC~~N/A<br \>E~~N/A

Storage

Store at -20 °C for one year. Avoid repeated freeze/thaw cycles. When reconstituted in sterile pH

7.4 0.01M PBS or diluent of antibody the antibody is stable for at least two weeks at 2-4 °C.

TOM1L2 Polyclonal Antibody - Protein Information

Name TOM1L2

Function

Acts as a MYO6/Myosin VI adapter protein that targets myosin VI to endocytic structures (PubMed:23023224). May also play a role in recruiting clathrin to endosomes (PubMed:16412388). May regulate growth factor-induced mitogenic signaling (PubMed:16479011).

Tissue Location

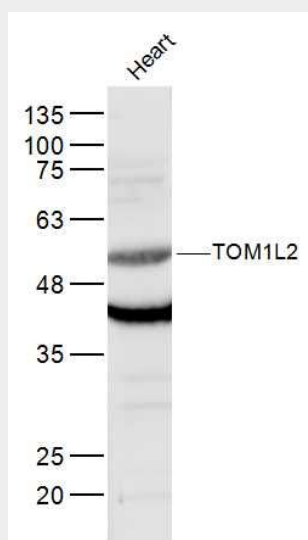
Ubiquitously expressed with higher expression in heart and skeletal muscle.

TOM1L2 Polyclonal Antibody - Protocols

Provided below are standard protocols that you may find useful for product applications.

- [Western Blot](#)
- [Blocking Peptides](#)
- [Dot Blot](#)
- [Immunohistochemistry](#)
- [Immunofluorescence](#)
- [Immunoprecipitation](#)
- [Flow Cytometry](#)
- [Cell Culture](#)

TOM1L2 Polyclonal Antibody - Images



Sample:

Heart (Mouse) Lysate at 40 ug

Primary: Anti-TOM1L2 (bs-17223R) at 1/300 dilution

Secondary: IRDye800CW Goat Anti-Rabbit IgG at 1/20000 dilution
Predicted band size: 56 kD
Observed band size: 56 kD