

DONSON Antibody (Center)
Purified Rabbit Polyclonal Antibody (Pab)
Catalog # AP5661C**Specification**

DONSON Antibody (Center) - Product Information

Application	WB, FC,E
Primary Accession	O9NYP3
Other Accession	O9QXP4 , NP_060083
Reactivity	Human
Predicted	Mouse
Host	Rabbit
Clonality	Polyclonal
Isotype	Rabbit IgG
Calculated MW	62747
Antigen Region	368-398

DONSON Antibody (Center) - Additional Information**Gene ID** 29980**Other Names**

Protein downstream neighbor of Son, B17, DONSON, C21orf60

Target/Specificity

This DONSON antibody is generated from rabbits immunized with a KLH conjugated synthetic peptide between 368-398 amino acids from the Central region of human DONSON.

Dilution

WB~~1:1000

FC~~1:10~50

E~~Use at an assay dependent concentration.

Format

Purified polyclonal antibody supplied in PBS with 0.09% (W/V) sodium azide. This antibody is prepared by Saturated Ammonium Sulfate (SAS) precipitation followed by dialysis against PBS.

Storage

Maintain refrigerated at 2-8°C for up to 2 weeks. For long term storage store at -20°C in small aliquots to prevent freeze-thaw cycles.

Precautions

DONSON Antibody (Center) is for research use only and not for use in diagnostic or therapeutic procedures.

DONSON Antibody (Center) - Protein Information**Name** DONSON

Synonyms C21orf60

Function Replisome component that maintains genome stability by protecting stalled or damaged replication forks. After the induction of replication stress, required for the stabilization of stalled replication forks, the efficient activation of the intra-S-phase and G2/M cell-cycle checkpoints and the maintenance of genome stability.

Cellular Location

Nucleus. Note=Localizes at DNA replication sites.

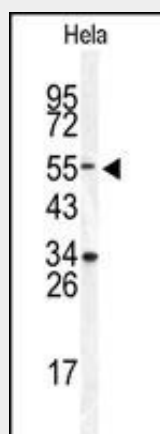
Tissue Location

Expressed in the brain, with higher levels in prenatal compared to adult brain.

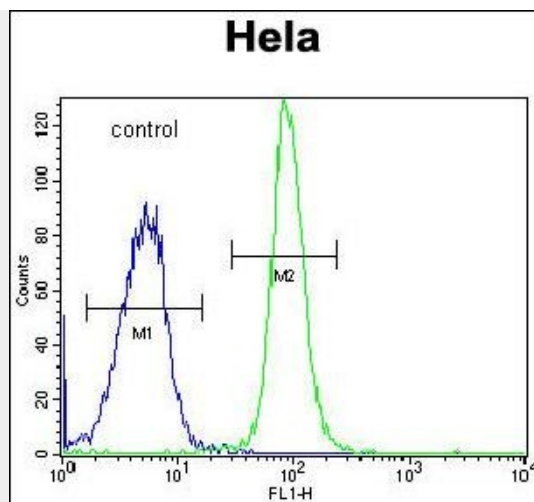
DONSON Antibody (Center) - Protocols

Provided below are standard protocols that you may find useful for product applications.

- [Western Blot](#)
- [Blocking Peptides](#)
- [Dot Blot](#)
- [Immunohistochemistry](#)
- [Immunofluorescence](#)
- [Immunoprecipitation](#)
- [Flow Cytometry](#)
- [Cell Culture](#)

DONSON Antibody (Center) - Images

Western blot analysis of DONSON Antibody (Center) (Cat. #AP5661c) in HeLa cell line lysates (35ug/lane). DONSON (arrow) was detected using the purified Pab.



DONSON Antibody (Center) (Cat. #AP5661c) flow cytometric analysis of Hela cells (right histogram) compared to a negative control cell (left histogram). FITC-conjugated goat-anti-rabbit secondary antibodies were used for the analysis.

DONSON Antibody (Center) - Background

DONSON lies downstream of the SON gene and spans 10 kb on chromosome 21. The function of this gene is unknown. [provided by RefSeq].

DONSON Antibody (Center) - References

Hillman, R.T., et al. Genome Biol. 5 (2), R8 (2004) :
Gardiner, K., et al. Genomics 79(6):833-843(2002)
Wynn, S.L., et al. Genomics 68(1):57-62(2000)
Slavov, D., et al. Gene 247 (1-2), 215-232 (2000) :