

**SCGF Polyclonal Antibody**  
**Purified Rabbit Polyclonal Antibody (Pab)**  
**Catalog # AP56646****Specification****SCGF Polyclonal Antibody - Product Information**

Application	IHC-P, IHC-F, IF, ICC
Primary Accession	<a href="#">O9Y240</a>
Host	Rabbit
Clonality	Polyclonal
Calculated MW	34 KDa
Physical State	Liquid
Immunogen	KLH conjugated synthetic peptide derived from human SCGF
Epitope Specificity	101-200/323
Isotype	IgG
<b>Purity</b>	
affinity purified by Protein A	
Buffer	0.01M TBS (pH7.4) with 1% BSA, 0.02% Proclin300 and 50% Glycerol.
SUBCELLULAR LOCATION	Cytoplasm. Secreted.
SIMILARITY	Contains 1 C-type lectin domain.
Post-translational modifications	O-glycosylated. Probably sulfated on the O-glycans.
Important Note	This product as supplied is intended for research use only, not for use in human, therapeutic or diagnostic applications.

**Background Descriptions**

SCGF is a cytokine for primitive hematopoietic progenitor cells and exhibits species-specific activity. It is predominantly expressed in proliferating chondrocytes, bone marrow cells, the periosteum and the perichondrium of skeletal tissues. SCGF contains an N-terminal Arg-Gly-Asp triplet (RGD triplet), leucine zipper domains, a C-terminal C-type lectin domain and numerous potential glycosylation sites. It has burst-promoting activity and granulocyte/macrophage colony-promoting activity in vitro. SCGF is directly correlated to granulocyte recovery following stem cell transplantation and thus can be an indicator of hematopoietic recovery following stem cell transplantation.

**SCGF Polyclonal Antibody - Additional Information****Gene ID** 6320**Other Names**

C-type lectin domain family 11 member A, C-type lectin superfamily member 3, Lymphocyte secreted C-type lectin, Osteolectin, Stem cell growth factor, p47, CLEC11A, CLECSF3, LSLCL, SCGF

**Target/Specificity**

Expressed in skeletal tissues including bone marrow, chondrocytes, primary ossification center-associated cells, the perichondrium and periosteum. Lower levels of expression were

detected in spleen, thymus, appendix and fetal liver.

**Dilution**

IHC-P ~ N/A  
IHC-F ~ N/A  
IF ~ 1:50 ~ 200  
ICC ~ N/A

**Format**

0.01M TBS(pH7.4), 0.09% (W/V) sodium azide and 50% Glyce

**Storage**

Store at -20 °C for one year. Avoid repeated freeze/thaw cycles. When reconstituted in sterile pH 7.4 0.01M PBS or diluent of antibody the antibody is stable for at least two weeks at 2-4 °C.

**SCGF Polyclonal Antibody - Protein Information**

**Name** CLEC11A

**Synonyms** CLECSF3, LSLCL, SCGF

**Function**

Promotes osteogenesis by stimulating the differentiation of mesenchymal progenitors into mature osteoblasts (PubMed: <http://www.uniprot.org/citations/27976999> target="\_blank">27976999</a>). Important for repair and maintenance of adult bone (By similarity).

**Cellular Location**

Cytoplasm. Secreted

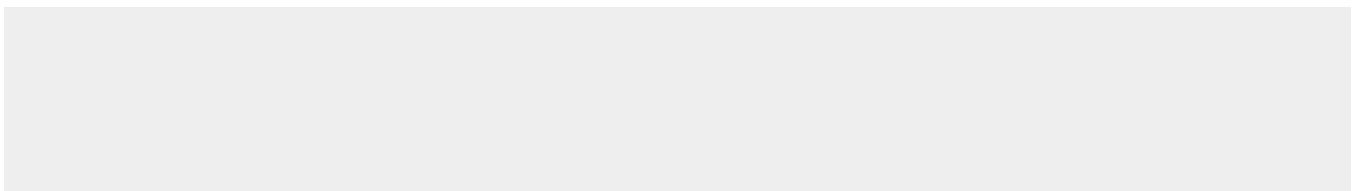
**Tissue Location**

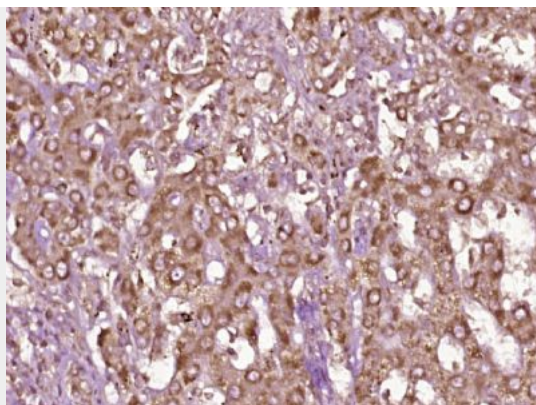
Expressed in skeletal tissues including bone marrow, chondrocytes, primary ossification center-associated cells, the perichondrium and periosteum. Lower levels of expression were detected in spleen, thymus, appendix and fetal liver

**SCGF Polyclonal Antibody - Protocols**

Provided below are standard protocols that you may find useful for product applications.

- [Western Blot](#)
- [Blocking Peptides](#)
- [Dot Blot](#)
- [Immunohistochemistry](#)
- [Immunofluorescence](#)
- [Immunoprecipitation](#)
- [Flow Cytometry](#)
- [Cell Culture](#)

**SCGF Polyclonal Antibody - Images**



Paraformaldehyde-fixed, paraffin embedded (human liver carcinoma); Antigen retrieval by boiling in sodium citrate buffer (pH6.0) for 15min; Block endogenous peroxidase by 3% hydrogen peroxide for 20 minutes; Blocking buffer (normal goat serum) at 37°C for 30min; Antibody incubation with (SCGF) Polyclonal Antibody, Unconjugated (bs-17284R) at 1:400 overnight at 4°C, followed by operating according to SP Kit(Rabbit) (sp-0023) instructions and DAB staining.